



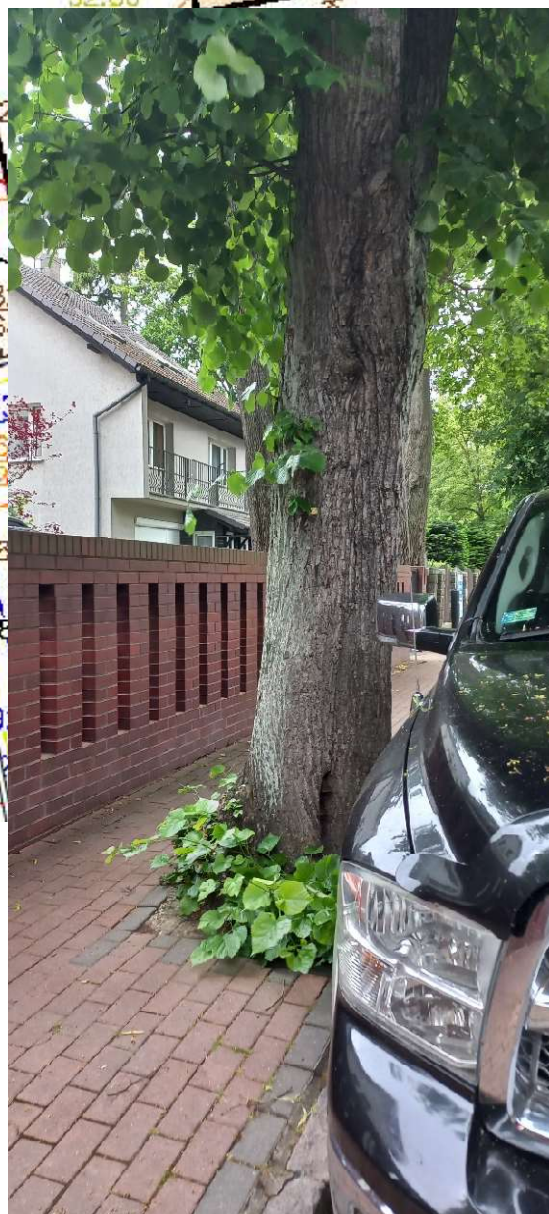
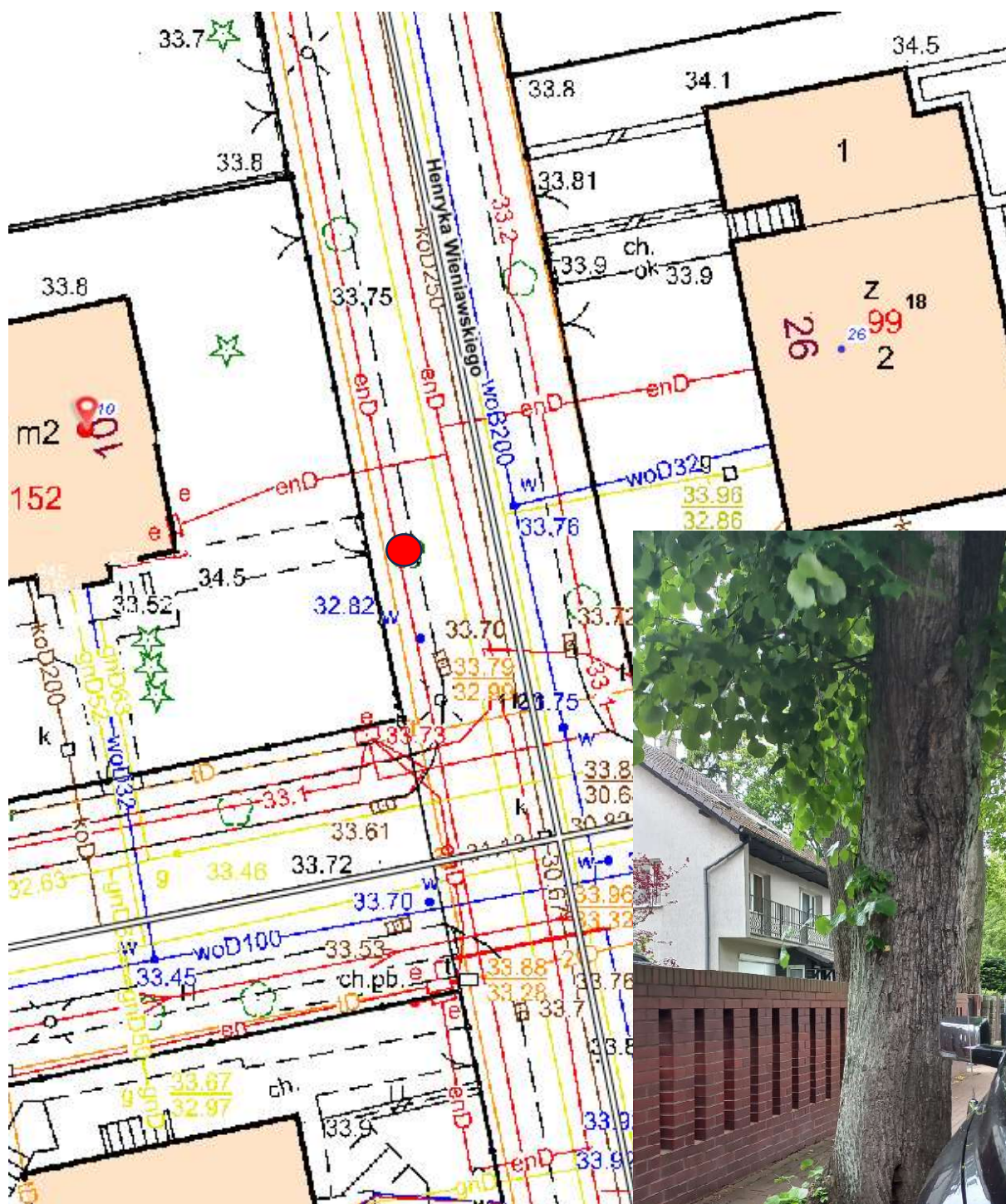
Ul. Brodzińskiego 4 ( 114/3 obręb 2077) – 1 sztuka Lipy drobnolistnej ( *Tilia cordata* )



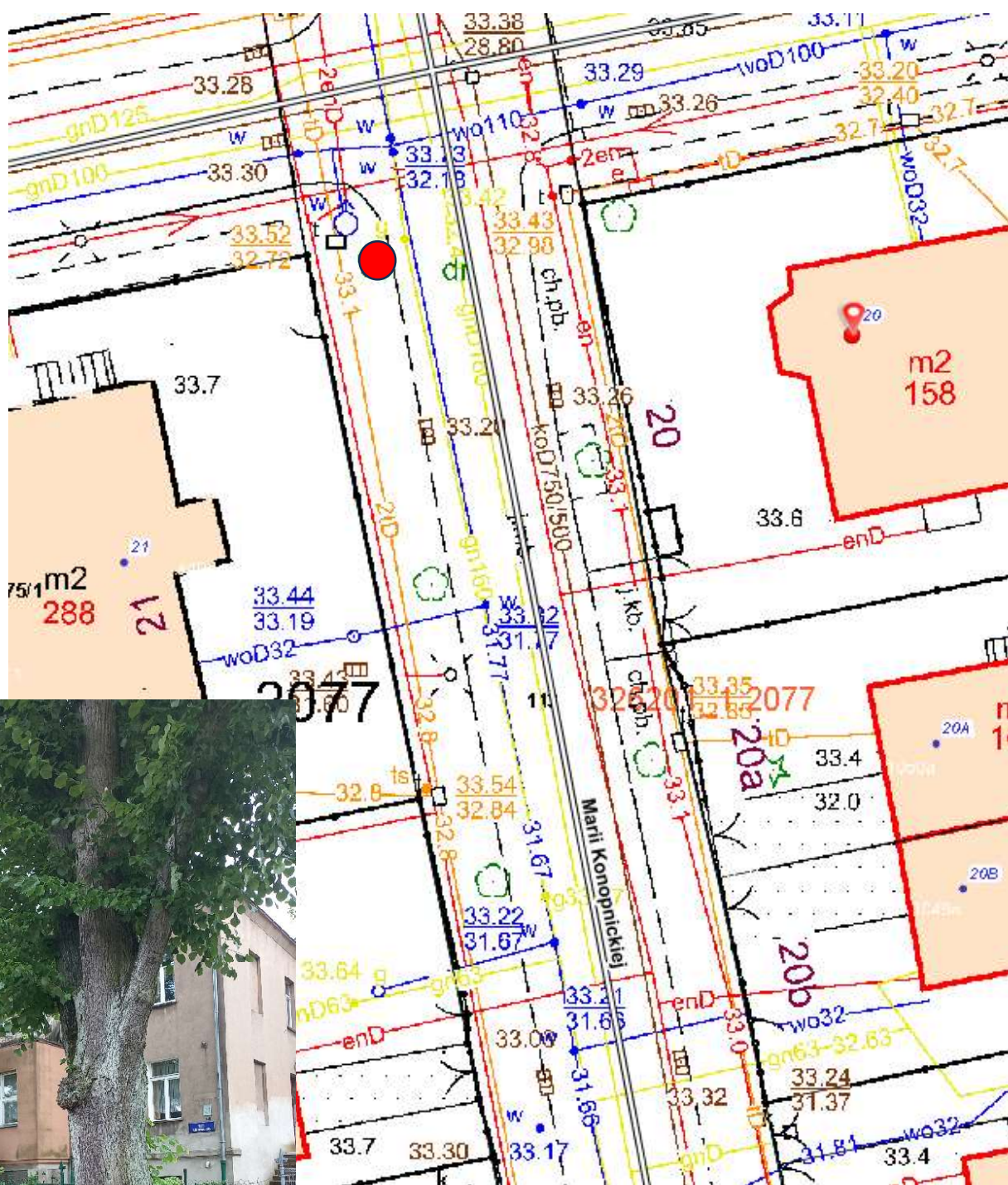
Ul. Wieniawskiego 2 ( dz.112/1 obręb 2077) – 1 sztuka Lipy drobnolistnej ( *Tilia cordata* )



Ul. Wieniawskiego 10 ( dz.112/1 obręb 2077)- – 1 sztuka Lipy drobnolistnej ( *Tilia cordata*)



Ul. Konopnickiej 21 ( dz.113 obręb 2077) - 1 sztuka Lipy drobnolistnej ( *Tilia cordata*)



The image is a composite of two parts. The left part is a technical site plan (cadastre) of a residential area. It shows property boundaries, building footprints, and various technical annotations. A red dot on the plan marks the location of a tree. The right part is a photograph of a large, mature tree with a thick trunk and dense foliage, situated on a sidewalk next to a road. A traffic sign is visible near the tree.

