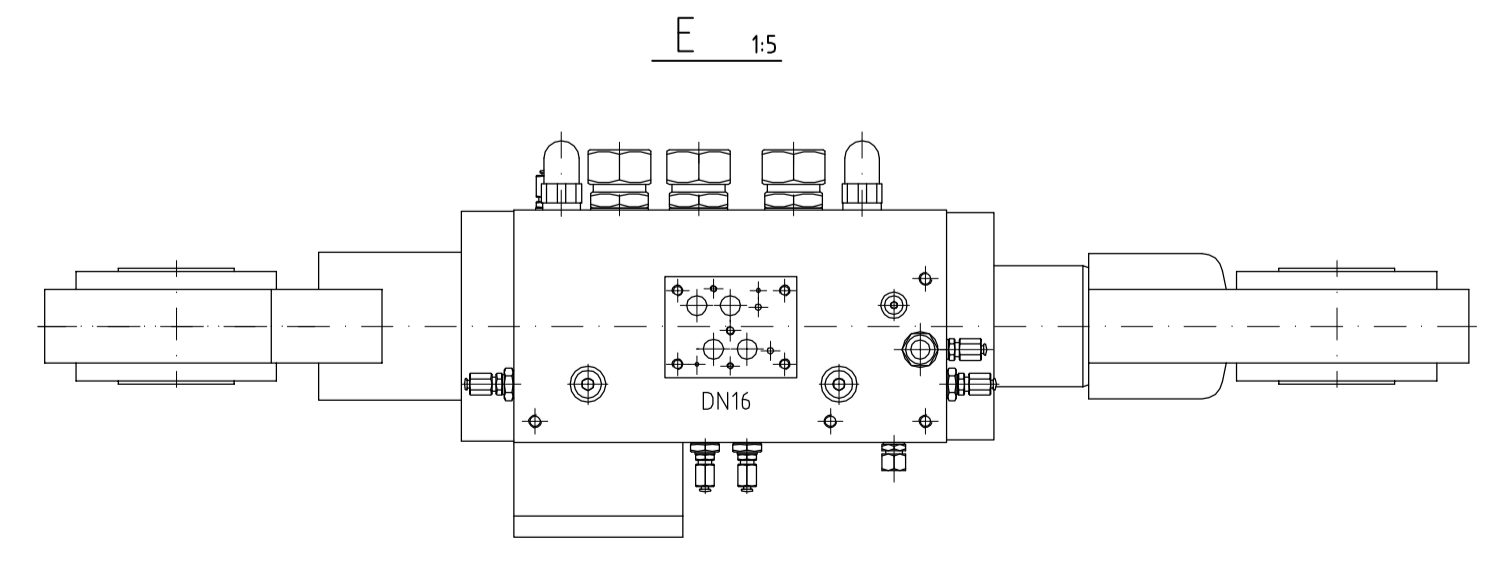
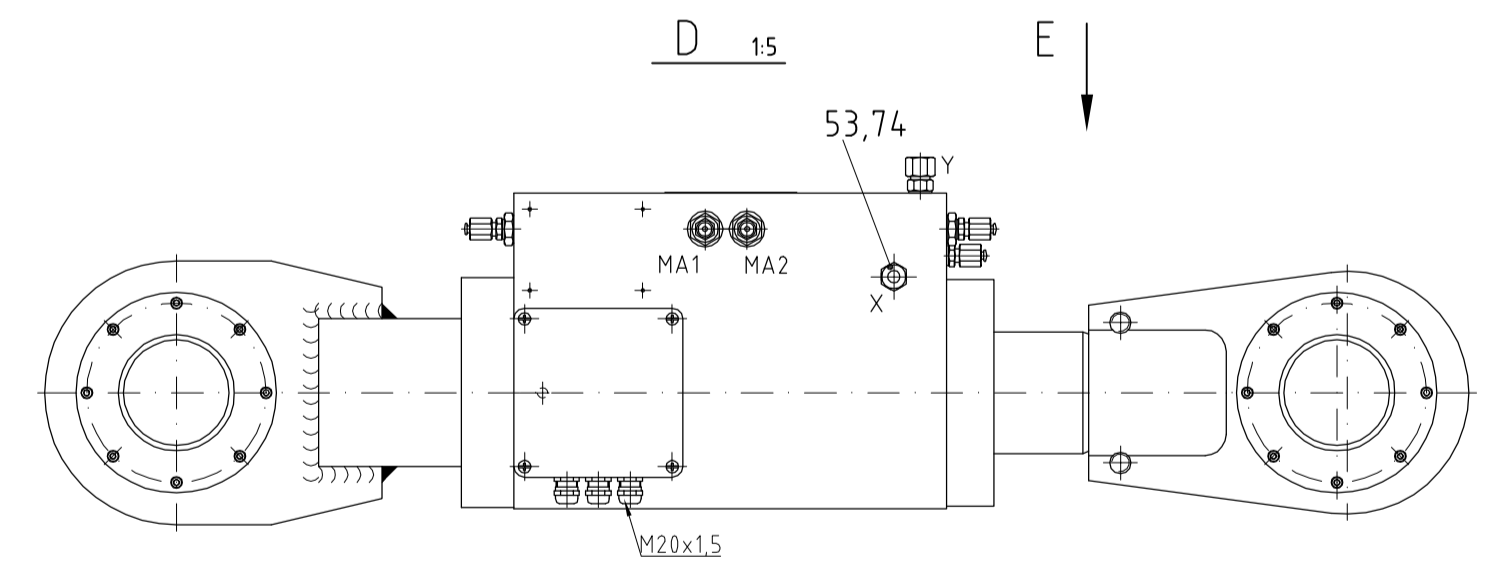
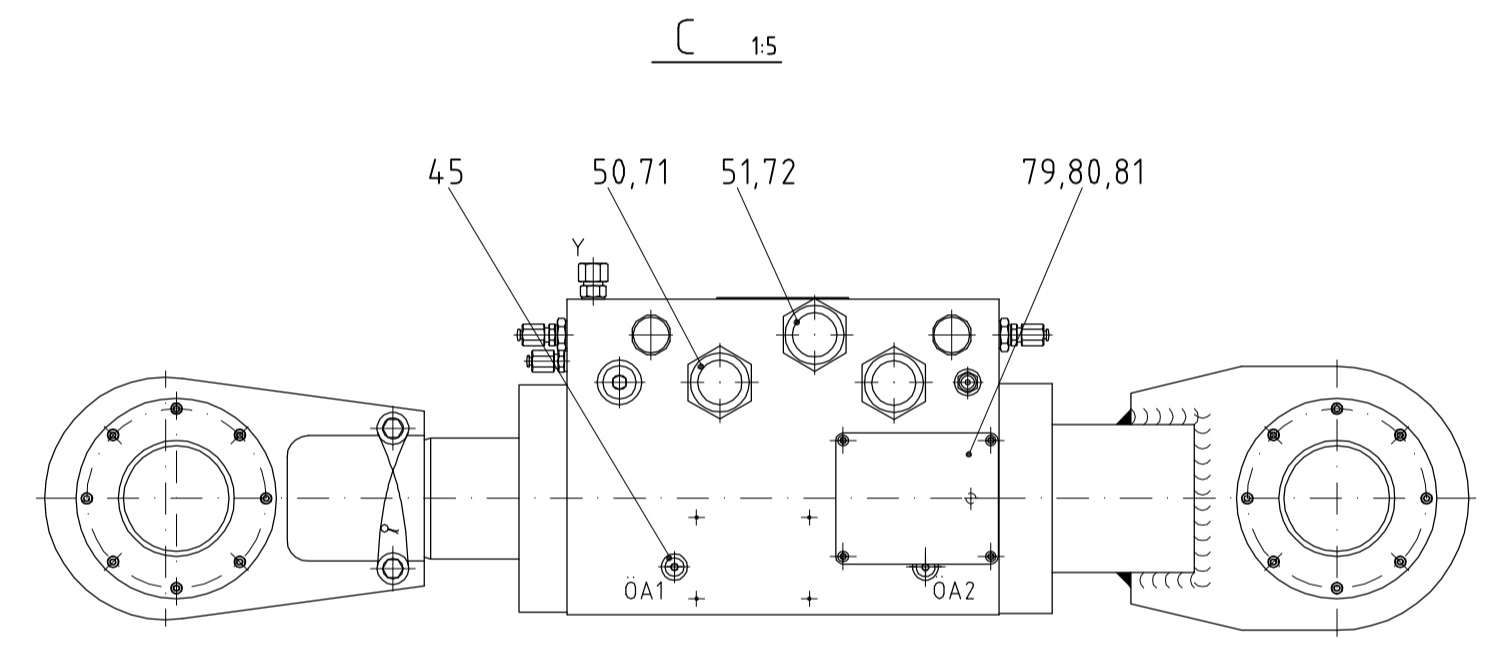
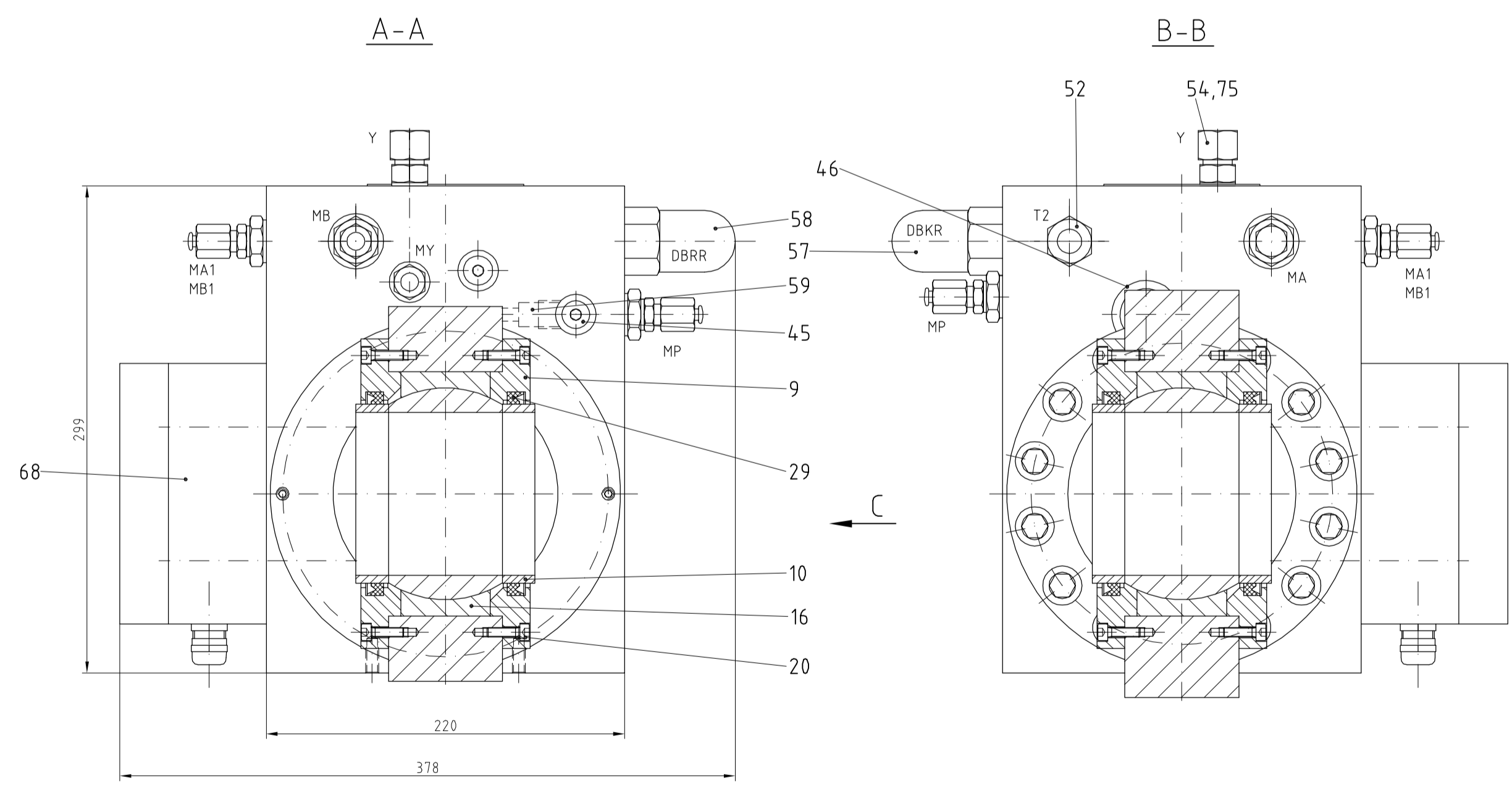


1 2x ) Zyl.Schr.M20x60,MA = 300Nm  
bei Montage mit ø2 gebohrt und  
mit Draht gesichert

1 2x ) socket head cap screw M20x60,MA = 300Nm  
during assembly to be drilled with ø2  
and to be secured by steel wire



connection Anschluß	pipe dimensions Abmessung Rohr	thread Gewinde	range Baureihe
P1	ø38x4	G1 1/4"	38 S (heavy) 38 S (schwer)
P2	ø38x4	G1 1/4"	38 S (heavy) 38 S (schwer)
T1	ø42x3	G1 1/4"	42 L (light) 42 L (leicht)
T2	-	G3/8"	verschlossen
X	ø12x2	G1/4"	12 L (light) 12 L (leicht)
Y	ø18x2	G1/2"	18 L (light) 18 L (leicht)
M...	DN4	G1/4"/G1/2"	M16x2

- velocity of piston 0,5 m/s
- piston rod hard-chrome-plated 40±5 µm
- sealing basic material NBR
- working temperature -20° to +80°C
- operating fluid mineral oil acc. DIN 51524 (HL,HLP)
- piston ø160 mm
- piston rod ø115 mm
- stroke 150 mm
- test pressure 525 bar
- working pressure piston side 240 bar
- working pressure rod side 350 bar
- Prime coat, varnish - see order
- Kolbengeschwindigkeit 0,5 m/s
- Kolbenstange hartverchromt 40±5 µm
- Dichtungen aus NBR
- Betriebstemperatur -20° bis +80°C
- Betriebsmedium Mineralöl nach DIN 51524 (HL,HLP)
- Kolben ø160 mm
- Kolbenstangen ø115 mm
- Hub 150 mm
- Prüfdruck 525 bar
- Arbeitsdruck kolbenseitig 240 bar
- Arbeitsdruck stangenseitig 350 bar
- Grundierung, Lackierung - siehe Bestellung

- tightening torque with MoS2-paste  
- Anziehdrehmoment bei MoS2-Paste

Pos.	diameter	required torque figures M <sub>A</sub> (Nm)
17	M20	4,40 Grade 10.9
20	M6	7,6 Grade 8.8

Do not scale this drawing!  
All rights out of this drawing are reserved according to DIN 9139.

Scale: 1:2 Weight: 315.000 kg

General: DIN ISO 2160 mK, DIN ISO 1920 AE, DIN ISO 2310 IA, DIN ISO 21652, DIN EN 25817 C

hydraulic cylinder  
160/115/150/1100/L/S175/100  
Hydraulikzylinder

Exam: 26.02.08/LU

Prepared by: V A 0

Project No.: 0001.14.0664

Department: 016, 014, 0000-00001619

IKN