











ZESTAWIENIE STOLARKI OKIENNEJ

OZNACZENIA OKIEN		O1	O2	O3	O4
OZNACZENIA KATALOGOWE		046 047			
SCHEMAT					
WYMIARY W SWIETLE MURU	So	900	900	900	900
	Ho	1700	1700	2100	2100
	Sz	865	865	865	865
	HZ	1635	1635	2035	2035
WYMIARY ZEWN. OSCIEZNICY					
POZIOMY GLOWNE/sztuk	POZIOM -3.6	17			
	POZIOM 0.00	12	12	3	3
	POZIOM +3.6	11	17	7	2
	OGOLEM	41	29	10	5
UWAGI Okna pokazane sa w widoku od wewnatrz budynku.		Na poziomie -3.6 zastosowac szyby ze szkła bezpiecz. antywlamaniowe			

Wg katalogu firmy "TRAS" Ltd Joint Venture, ul. Krakowska 87, Skawina



UWAGA!  
W pasmie 1  
stykających  
w pasmie 0,  
gdzie będzie  
posadce ins  
warstwy wyl  
warstwe 3cr

P2A  
PLYTKI CE  
PODKL. CE  
STYROPOL  
WYLEWKA  
PLYTA ZEL

P3A  
PLYTKI LA  
PODKL. CE  
STYROPOL  
WYLEWKA  
IZOL. P. W  
TERMOZG  
Polbit PF 2  
EMULSJI /  
WYL. WYR  
BETON B1  
PIASEK

P5A  
PCV ZGRZ  
PODKL. CE  
STYROPOL  
WYLEWKA  
PLYTA ZE1

P2C  
PLYTKI CE  
PODKL. CE  
STYROPOL  
GLADZ CE  
PLYTA ZE1  
IZOL. P. W  
TERMOZG  
Polbit PF 2  
EMULSJI /  
CHUDY BE  
GRUNT N

P2E  
PLYTKI LA  
PODKL. CI  
IZOL. P. W  
TERMOZG  
Polbit PF 2  
EMULSJI /  
BETON W  
STYROPOL  
IZOL. P. W  
TERMOZG  
Polbit PF 2  
EMULSJI /  
WYL. WYF  
BETON B1  
PIASEK

P2F  
PLYTKI CE  
PODKL. C  
IZOL. P. W  
TERMOZG  
Polbit PF 2  
EMULSJI /  
BETON W  
STYROPOL  
PLYTA ZE

P3B  
PLYTKI LA  
PODKL. C  
IZOL. P. V  
TERMOZG  
Polbit PF;  
EMULSJI  
BETON W  
STYROPOL  
IZOL. P. V  
TERMOZG  
Polbit PF  
EMULSJI  
WYL. WY  
BETON B  
PIASEK

SyA  
TYNK WEWNETRZNY  
W SYST. YTONG  
YTONG  
36.5

SF  
CEGLA PELNA  
STYROPOL  
IZOL. P. WLG. - 2x PAPA  
TERMOZGRZ. POLIM.-ASF.  
Polbit PF 250/4000 NA ASF.  
EMULSJI ANIONOWEJ  
ZELBET  
PLYTKI CERAMICZNE  
20.0  
1.0

A3  
PLYTKI CER. GRESOWE  
ROOFMATE  
ZELBET  
IZOL. P. WODNA - 2x PAPA  
TERMOZGRZEW. KVE 45K  
ROOFMATE  
TYNK  
5.0

RURA PERFOROW. PCV DRENARSKA  
O 15cm W OBSYPCE ZWIROWEJ  
ODWODNIENIE TYPU ACO GALA  
Z RUSZTEM KL. A

CHUDY BETON gr. 10 cm

L-1  
Poz. 4

D

C

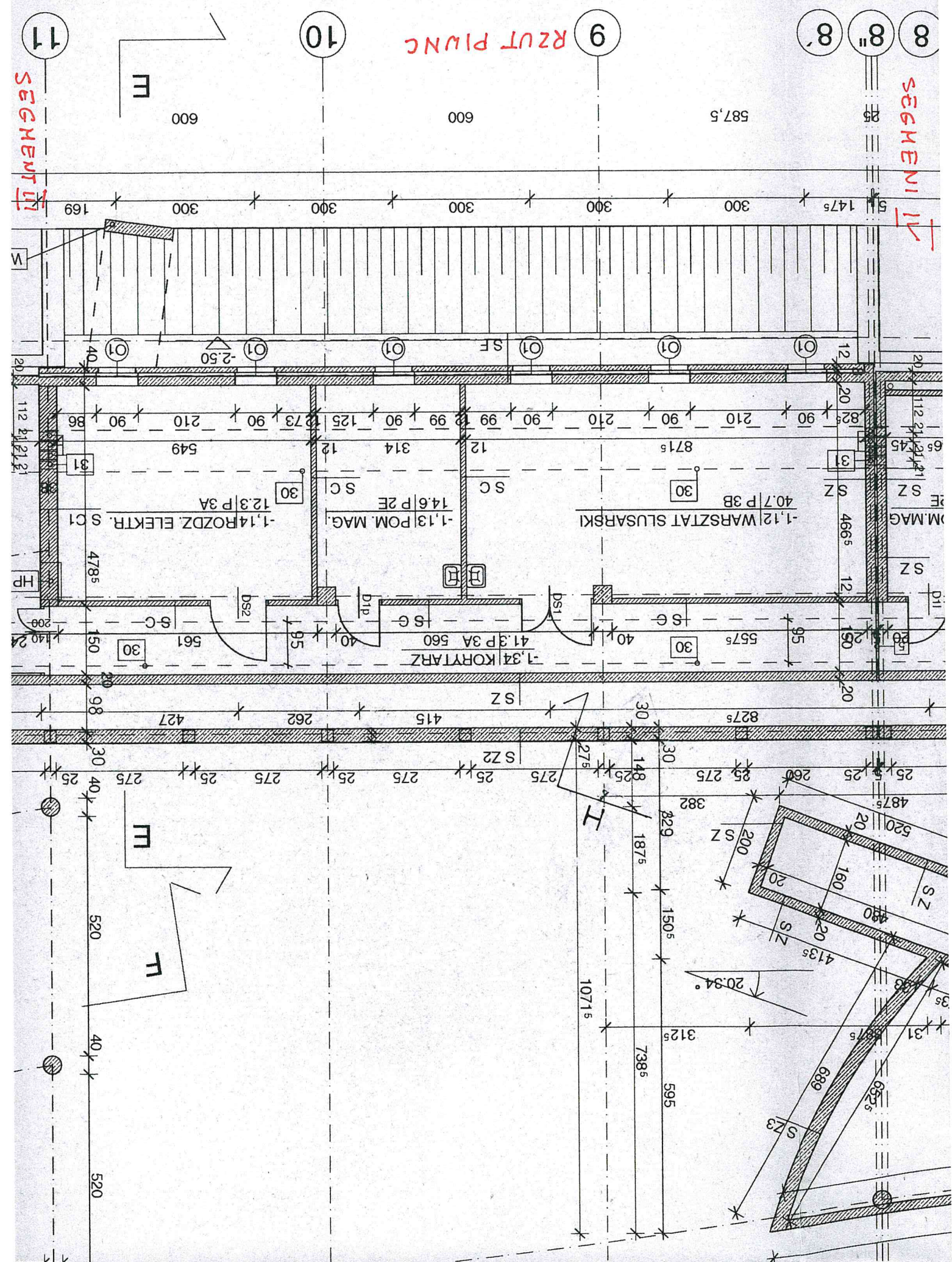
Przekrój



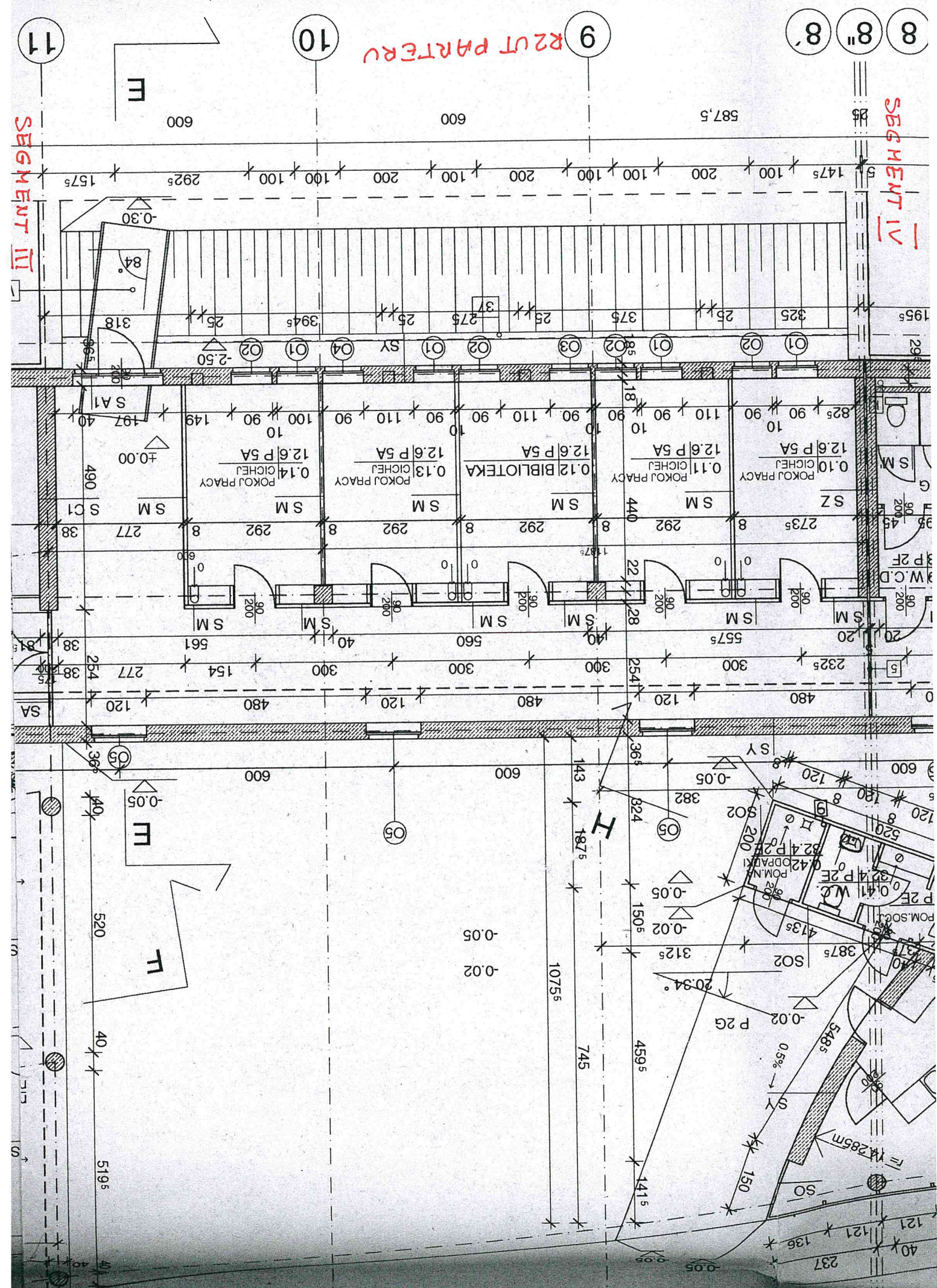
The architectural floor plan illustrates a building layout divided into two main sections: SEGMENT I and SEGMENT II. The plan is overlaid on a grid system with horizontal and vertical axes. Key features include:

- SEGMENT I:** Located on the left side of the plan, it contains a large rectangular area with a grid of smaller rectangular rooms. A central corridor runs vertically through this segment. Elevations are marked at +0.00, +2.85, +7.85, +9.05, and +10.55. Dimensions of 600 and 587.5 are indicated.
- SEGMENT II:** Located on the right side of the plan, it is a larger, more open area. It features a central corridor and several smaller rooms. Elevations are marked at +0.00, +2.85, +7.85, +9.05, and +10.55. Dimensions of 707.5 and 720 are indicated.
- Service Areas:** Various service areas are labeled, including SA1, SF, SY, D3, and A3. These areas are typically located near the perimeter of the building.
- Elevations:** The plan includes several elevation markers, such as +0.00, +2.85, +7.85, +9.05, and +10.55, which likely represent different levels or heights within the building.
- Dimensions:** Horizontal dimensions of 600, 587.5, 707.5, and 720 are shown, indicating the width of various sections of the building.
- Orientation:** A north arrow is located in the upper right corner of the plan, pointing towards the top right.















UWAGA!  
W pasmie  
stykającym  
w pasmie C  
gdzie będą  
posadki in  
warstwy w  
warstwie 3c

P2A  
PLYTKI C  
PODKL. C  
STYROPI  
WYLEWK  
PLYTA ZE

P3A  
PLYTKI L  
PODKL. C  
STYROPI  
WYLEWK  
IZOL. P. V  
TERMOZ  
Polbit PF  
EMULSJI  
WYL. WY  
BETON B  
PIASEK

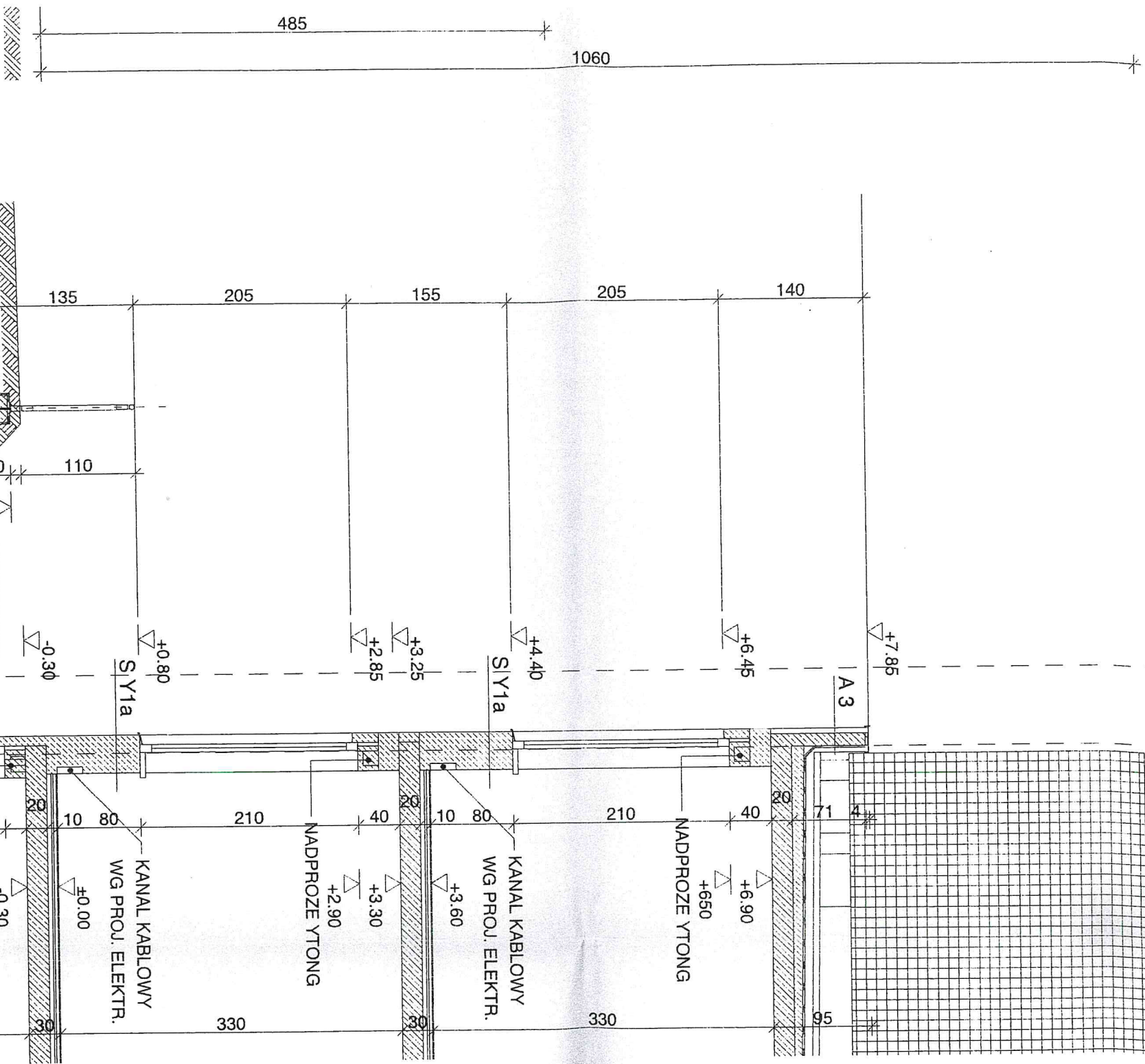
P5A  
PCV ZGR  
PODKL. C  
STYROPI  
WYLEWK  
PLYTA ZE

P2C  
PLYTKI C  
PODKL. C  
STYROPI  
GLADZ C  
PLYTA ZE  
IZOL. P. V  
TERMOZ  
Polbit PF  
EMULSJI  
CHUDY B  
GRUNT B

P2E  
PLYTKI L  
PODKL. C  
IZOL. P. V  
TERMOZ  
Polbit PF  
EMULSJI  
BETON V  
STYROPI  
IZOL. P. V  
TERMOZ  
Polbit PF  
EMULSJI  
WYL. WY  
BETON E  
PIASEK

P2F  
PLYTKI C  
PODKL. C  
IZOL. P. V  
TERMOZ  
Polbit PF  
EMULSJI  
BETON V  
STYROPI  
PLYTA ZE

P3B  
PLYTKI L  
PODKL. C  
IZOL. P. V  
TERMOZ  
Polbit PF  
EMULSJI  
BETON V  
STYROPI  
IZOL. P. V  
TERMOZ  
Polbit PF  
EMULSJI  
WYL. WY  
BETON  
PIASEK



A3  
PLYTKI CER. GRESOWE 1.0  
ROOFMATE 5.0  
ZELBET 12.0  
IZOL. P. WODNA - 2x PAPA  
TERMOZGRZEW. KVE 45K  
ROOFMATE 5.0  
TYNK

SYA  
TYNK WEWNETRZNY  
W SYST. YTONG 36.5  
YTONG

SF  
CEGLA PELNA 12.0  
STYROPIAN 8.0  
IZOL. P. WILG. - 2x PAPA  
TERMOZGRZ. POLIM.-ASF.  
Polbit PF 250/400 NA ASF.  
EMULSJI ANIONOWEJ  
ZELBET 20.0  
PLYTKI CERAMICZNE 1.0

P2EKR05



ELEWACJA POZUJĄCA

SEGMENT IV

SEGMENT III

SF  
do poz.  
±0.00 m

SA1

SY

-2.50

-0.30

+0.00

+2.85

+7.85

A3

+10.55

707,5

587,5

600

600

720

707,5

7

8

8"

8'

9

10

11

12

13