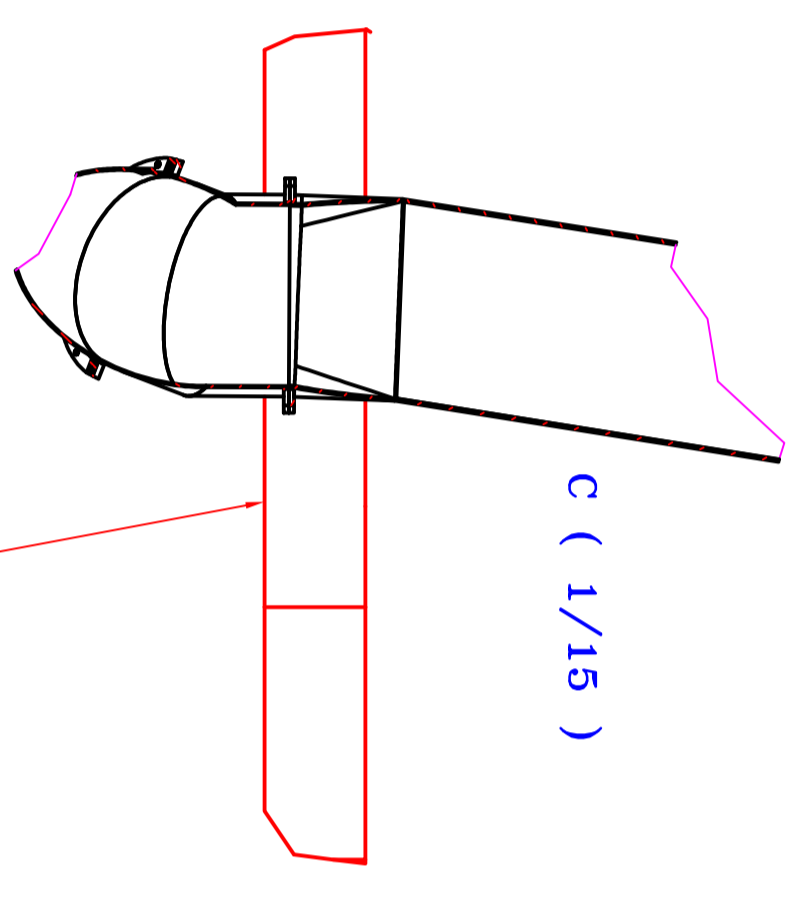
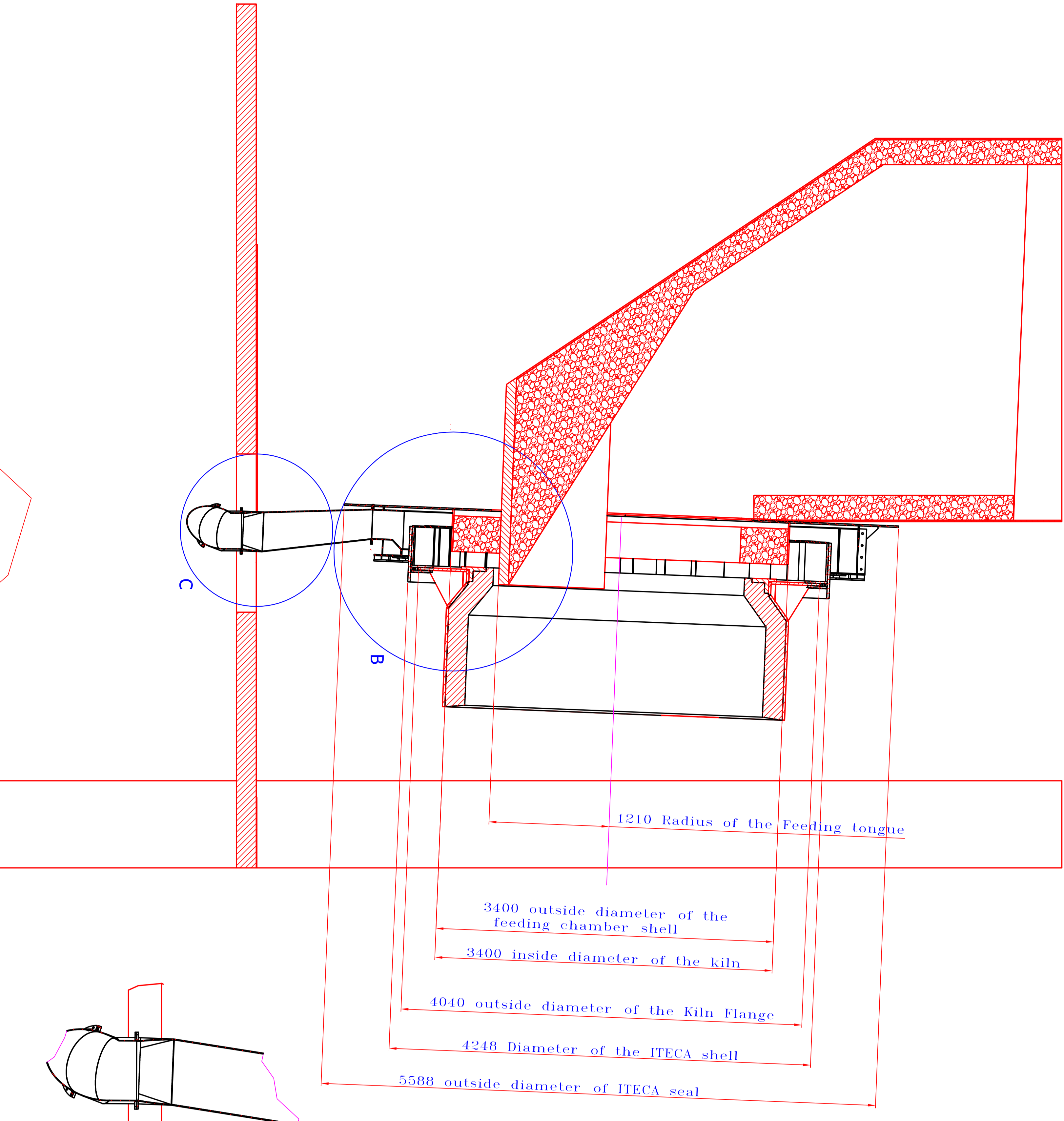
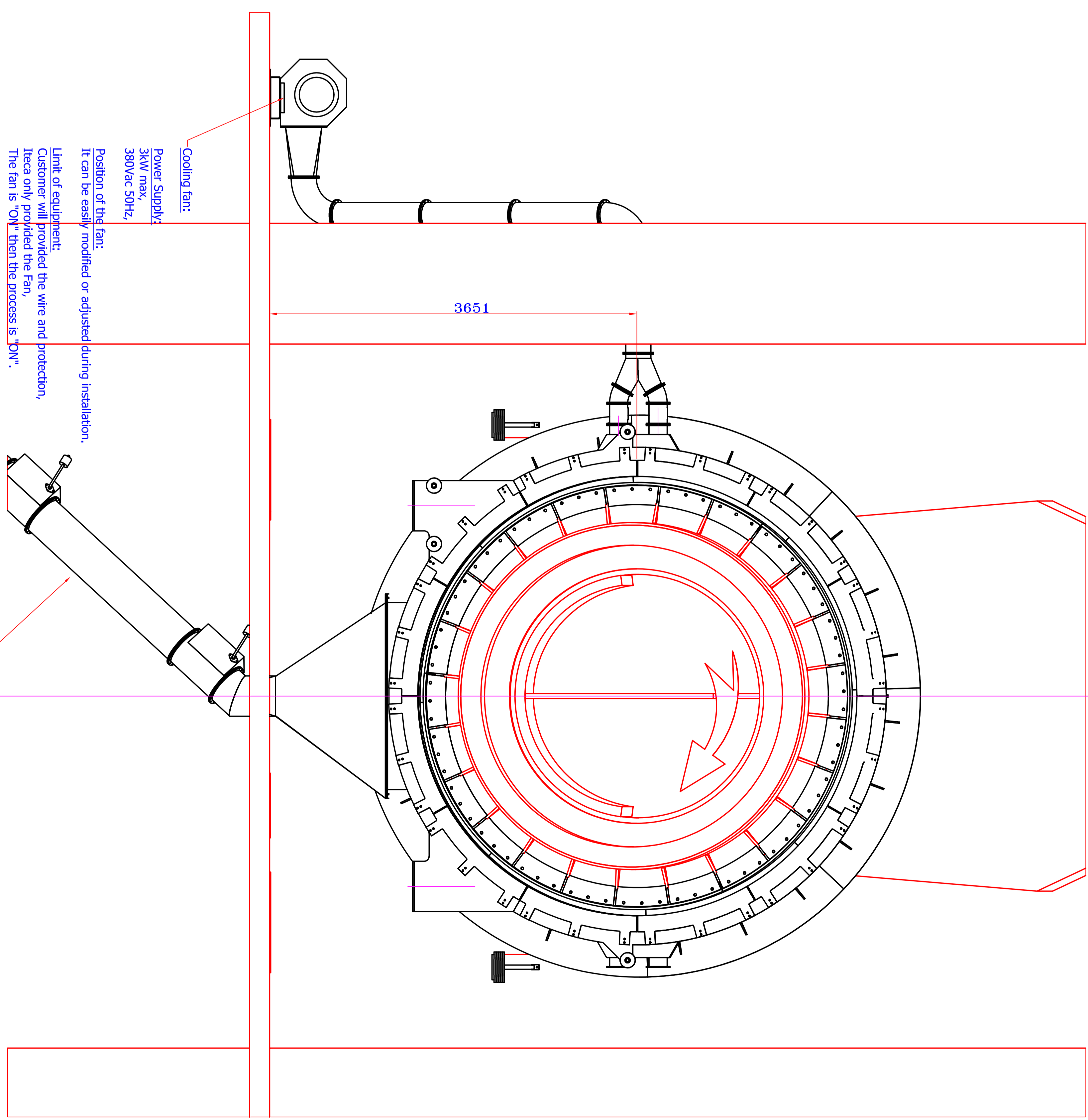


A-A (1/25)

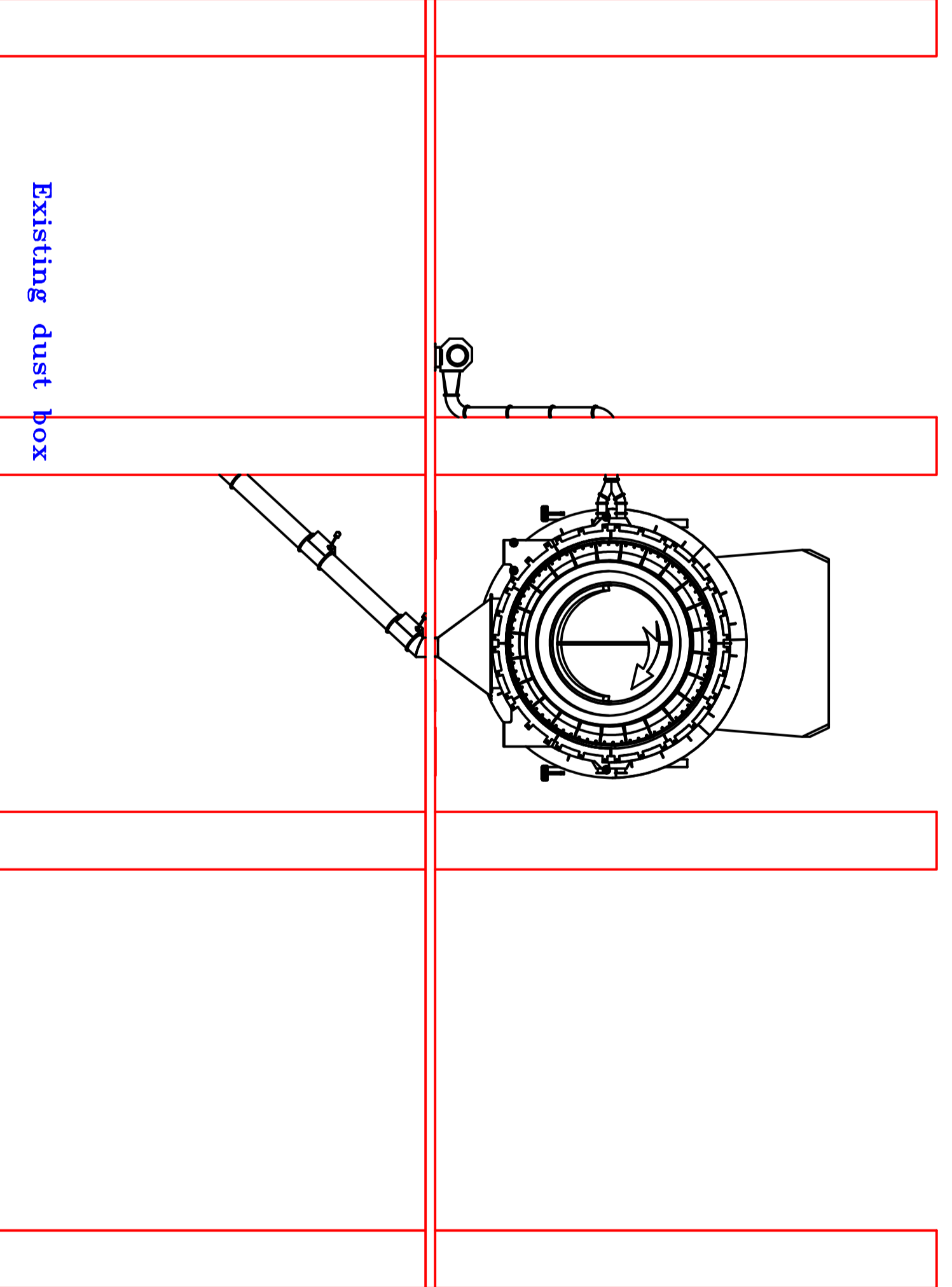


Platform modification:
The platform have to be modify to permit the passage of the dust pipe. The existing dust hopper and its pipe will be remove and/or modified during installation. This modification will be supervised by ITECA.



Cooling fan:
Power Supply: 3x380V ac 50Hz
380V ac 50Hz
Position of the fan:
It can be easily modified or adjusted during installation.
Limit of equipment:
Customer will provided the wire and protection, ITECA only provided the fan, The fan is "ON" then the process is "ON".

Dust pipe:
The dust pipe will follow the existing pipe. Some flexible support will be made. A closing plate will be made to avoid dust leakage, the metallic dust container need to be replace and upgrade by a concrete dust box of 12m3 minimum
A platform must be add to permit a maintenance access



• Hot Kiln – middle position
Maximum displacement –50/+50mm
Usage displacement –10/+50mm
Thermal expansion 14mm

* Inlet flange radial movement: +/-15 mm
* Voltage: 380V 50Hz
* Stoppage planning: March 19 for 3 weeks days (+/- 3 days)
Operations :
-replace fan of kiln shell (outlet segment and last roller)
-refractory work (no turning operation)

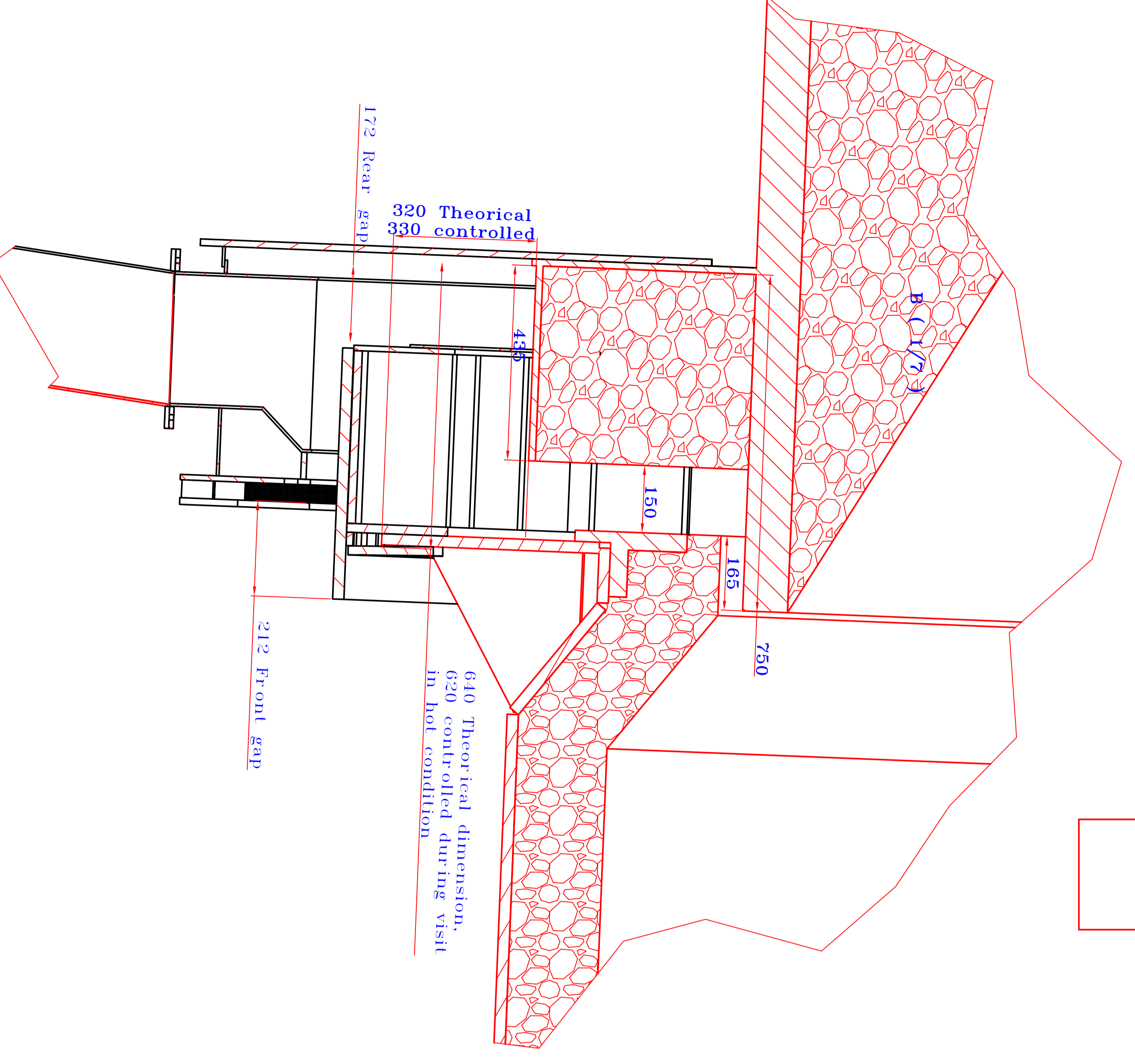
Operation to do before installation the seal:
-Remove the existing seal.
-Clean the Kiln Flange.
-Remove the existing dust hopper and pipe.
-Clean the dust area from the dust (ground level).
-Prepare the power supply for the fan.
-Clean and repair the inlet chamber shell.
-Clean and change the feeding tongue if damaged.
-Clean and repair the front panel of the feeding chamber.
-Clean south of and replace if need, the feeding tongue.

The seal installation will start after kiln alignment and before brick installation.
Two days is needed with complete access to the Kiln Rotation.

Observation:
The Inlet Chamber is not lying on the ground. Some Inlet Chamber expansion millimeter have to be consider during installation

APPROVAL FOR MANUFACTURING:

Company:
Position:
Name:
Date:
VISA:



640 Theoretical dimension, 620 controlled during visit in hot condition

D	Rev	Date	Description	Notes
A				
B				
C				

Qty	18-424 Odra - OPOLSKA - POLAND	
Unit		
Material		
Treatment		
Execution		
Order ref.		
Order ref.		
Order ref.		

Preliminary arrangement:

Order ref.	LB	12/08/2014
------------	----	------------

ITECA SOCADEI Pol. tel: +384 63 4242723 Fax: +384 63 4242723

Forma do projeto Numero do projeto **18-424-001** Scale **1 / 1**