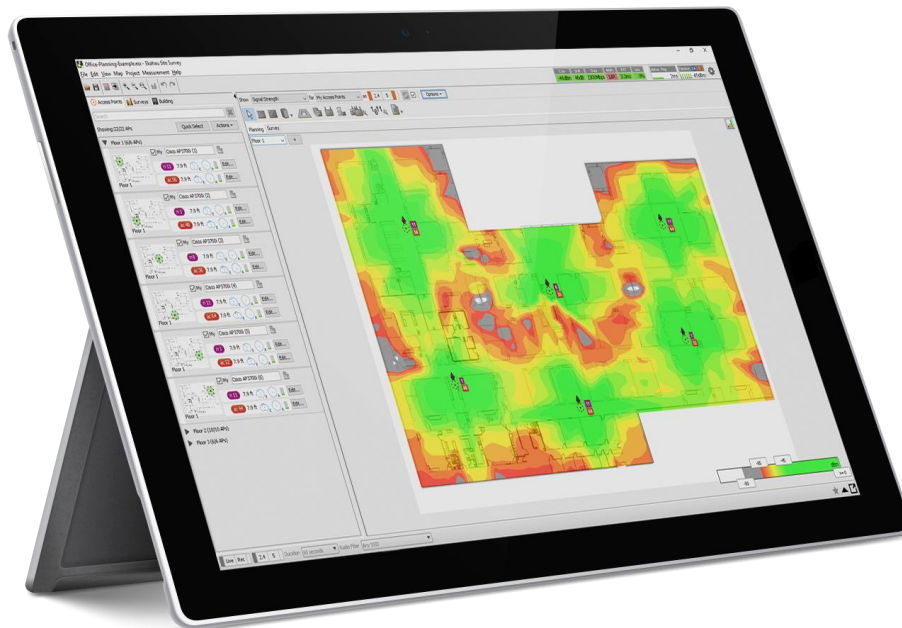


Wi-Fi Network Report



Name: **wziks_design**

Location:

Responsible Person:

Parter cz1

Survey routes and Access Points for Parter cz1



View as / Project Offset:

Generic Laptop (-3 dB/-3 dB)

Area-5 (2,642 m²)

Coverage Requirement: Ekahau Best Practices		
2.4 GHz	Signal Strength Min	-67.0 dBm
	Signal-to-Noise Ratio Min	20.0 dB
	Data Rate Min	24 Mbps
	Channel Interference Max	2 at min. -85.0 dBm
	Round Trip Time (RTT) Max	200 ms
	Packet Loss Max	0.0 %
5 GHz	Signal Strength Min	-67.0 dBm
	Secondary Signal Strength Min	-67.0 dBm
	Signal-to-Noise Ratio Min	25.0 dB
	Data Rate Min	24 Mbps
	Channel Interference Max	1 at min. -85.0 dBm
	Round Trip Time (RTT) Max	200 ms
	Packet Loss Max	0.0 %

Signal Strength for Parter cz1 on 2.4 GHz band

Signal Strength - sometimes called coverage - is the most basic requirement for a wireless network. As a general guideline, low signal strength means unreliable connections, and low data throughput.



Signal Strength for Parter cz1 on 5 GHz band

Signal Strength - sometimes called coverage - is the most basic requirement for a wireless network. As a general guideline, low signal strength means unreliable connections, and low data throughput.



Access Points on Parter cz1



My Access Points on Parter cz1

Simulated Access Points on Parter cz1

AP #	Access Point			
14	Simulated AP-10		Aruba AP-303	
	802.11n	6	10 mW	Aruba AP-303 2.4GHz
	802.11ac	140	25 mW	Aruba AP-303 5GHz
	Bluetooth	-	1 mW	Aruba AP-303 BLE
15	Simulated AP-11		Aruba AP-303	
	802.11n	1	10 mW	Aruba AP-303 2.4GHz
	802.11ac	112	25 mW	Aruba AP-303 5GHz
	Bluetooth	-	1 mW	Aruba AP-303 BLE
16	Simulated AP-12		Aruba AP-303	
	802.11n	11	10 mW	Aruba AP-303 2.4GHz
	802.11ac	56	25 mW	Aruba AP-303 5GHz
	Bluetooth	-	1 mW	Aruba AP-303 BLE
17	Simulated AP-13		Aruba AP-303	
	802.11n	1	10 mW	Aruba AP-303 2.4GHz
	802.11ac	64	25 mW	Aruba AP-303 5GHz
	Bluetooth	-	1 mW	Aruba AP-303 BLE
18	Simulated AP-14		Aruba AP-303	
	802.11n	11	10 mW	Aruba AP-303 2.4GHz
	802.11ac	100	25 mW	Aruba AP-303 5GHz
	Bluetooth	-	1 mW	Aruba AP-303 BLE
19	Simulated AP-15		Aruba AP-303	
	802.11n	6	10 mW	Aruba AP-303 2.4GHz
	802.11ac	120	25 mW	Aruba AP-303 5GHz
	Bluetooth	-	1 mW	Aruba AP-303 BLE
20	Simulated AP-16		Aruba AP-303	
	802.11n	1	10 mW	Aruba AP-303 2.4GHz

Wi-Fi Network Report

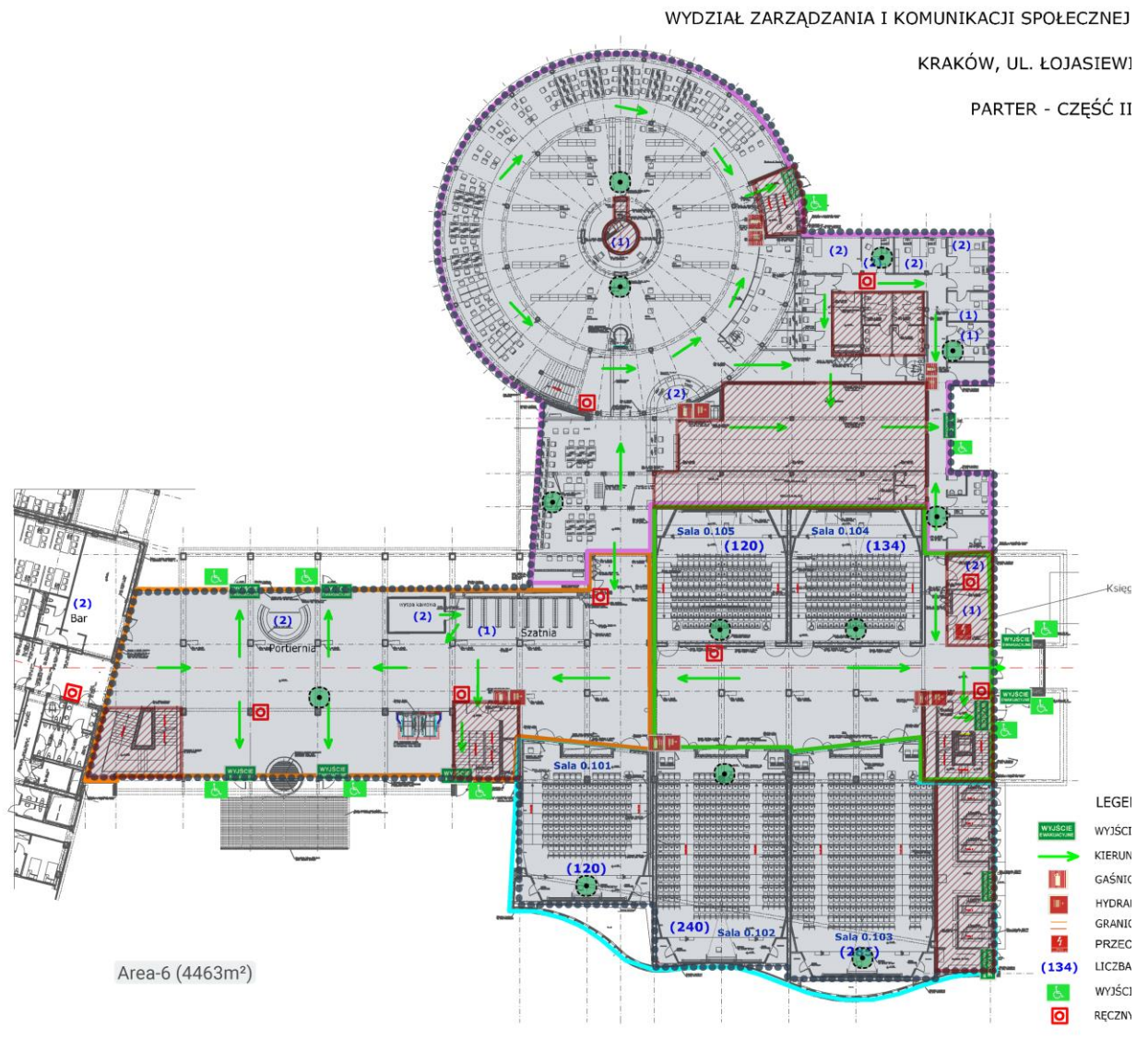
	802.11ac	140	25 mW	Aruba AP-303 5GHz
	Bluetooth	-	1 mW	Aruba AP-303 BLE
21	Simulated AP-17		Aruba AP-303	
	802.11n	11	10 mW	Aruba AP-303 2.4GHz
	802.11ac	128	25 mW	Aruba AP-303 5GHz
	Bluetooth	-	1 mW	Aruba AP-303 BLE
22	Simulated AP-18		Aruba AP-303	
	802.11n	6	10 mW	Aruba AP-303 2.4GHz
	802.11ac	44	25 mW	Aruba AP-303 5GHz
	Bluetooth	-	1 mW	Aruba AP-303 BLE
23	Simulated AP-2		Aruba AP-303	
	802.11n	11	10 mW	Aruba AP-303 2.4GHz
	802.11ac	44	25 mW	Aruba AP-303 5GHz
	Bluetooth	-	1 mW	Aruba AP-303 BLE
24	Simulated AP-3		Aruba AP-303	
	802.11n	6	10 mW	Aruba AP-303 2.4GHz
	802.11ac	112	25 mW	Aruba AP-303 5GHz
	Bluetooth	-	1 mW	Aruba AP-303 BLE
25	Simulated AP-4		Aruba AP-303	
	802.11n	11	10 mW	Aruba AP-303 2.4GHz
	802.11ac	100	25 mW	Aruba AP-303 5GHz
	Bluetooth	-	1 mW	Aruba AP-303 BLE
26	Simulated AP-5		Aruba AP-303	
	802.11n	1	10 mW	Aruba AP-303 2.4GHz
	802.11ac	52	25 mW	Aruba AP-303 5GHz
	Bluetooth	-	1 mW	Aruba AP-303 BLE
27	Simulated AP-6		Aruba AP-303	
	802.11n	6	10 mW	Aruba AP-303 2.4GHz
	802.11ac	64	25 mW	Aruba AP-303 5GHz
	Bluetooth	-	1 mW	Aruba AP-303 BLE

Wi-Fi Network Report

28	Simulated AP-7		Aruba AP-303	
	802.11n	11	10 mW	Aruba AP-303 2.4GHz
	802.11ac	36	25 mW	Aruba AP-303 5GHz
	Bluetooth	-	1 mW	Aruba AP-303 BLE
29	Simulated AP-8		Aruba AP-303	
	802.11n	6	10 mW	Aruba AP-303 2.4GHz
	802.11ac	108	25 mW	Aruba AP-303 5GHz
	Bluetooth	-	1 mW	Aruba AP-303 BLE
30	Simulated AP-9		Aruba AP-303	
	802.11n	1	10 mW	Aruba AP-303 2.4GHz
	802.11ac	124	25 mW	Aruba AP-303 5GHz
	Bluetooth	-	1 mW	Aruba AP-303 BLE

Parter cz2

Survey routes and Access Points for Parter cz2



View as / Project Offset:

Generic Laptop (-3 dB/-3 dB)

Area-6 (3,784 m²)

Coverage Requirement: **Ekahau Best Practices**

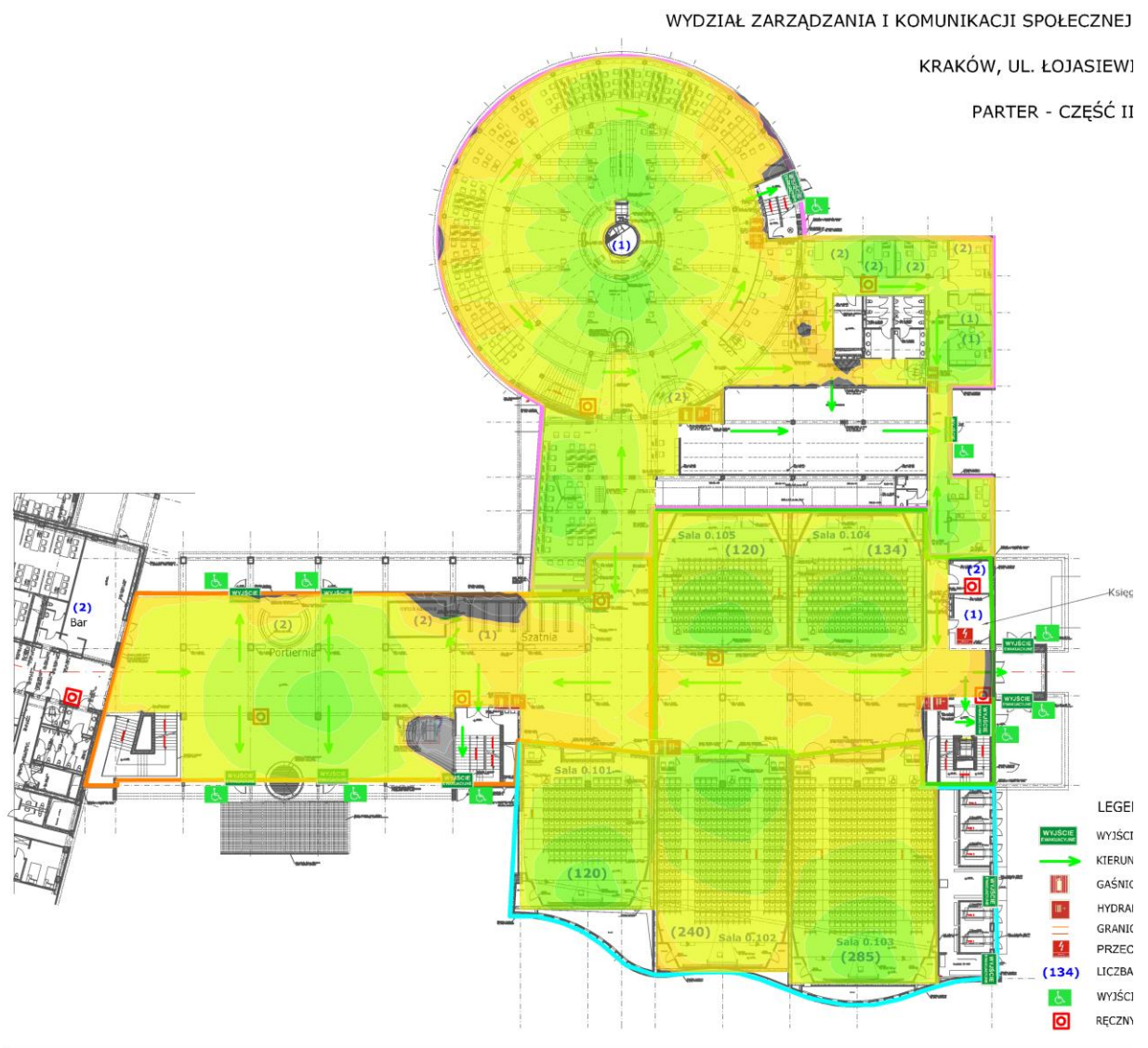
2.4 GHz	Signal Strength Min	-67.0 dBm
	Signal-to-Noise Ratio Min	20.0 dB

Wi-Fi Network Report

	Data Rate Min	24 Mbps
	Channel Interference Max	2 at min. -85.0 dBm
	Round Trip Time (RTT) Max	200 ms
	Packet Loss Max	0.0 %
5 GHz	Signal Strength Min	-67.0 dBm
	Secondary Signal Strength Min	-67.0 dBm
	Signal-to-Noise Ratio Min	25.0 dB
	Data Rate Min	24 Mbps
	Channel Interference Max	1 at min. -85.0 dBm
	Round Trip Time (RTT) Max	200 ms
	Packet Loss Max	0.0 %

Signal Strength for Parter cz2 on 2.4 GHz band

Signal Strength - sometimes called coverage - is the most basic requirement for a wireless network. As a general guideline, low signal strength means unreliable connections, and low data throughput.



≤ -90 dBm

-67

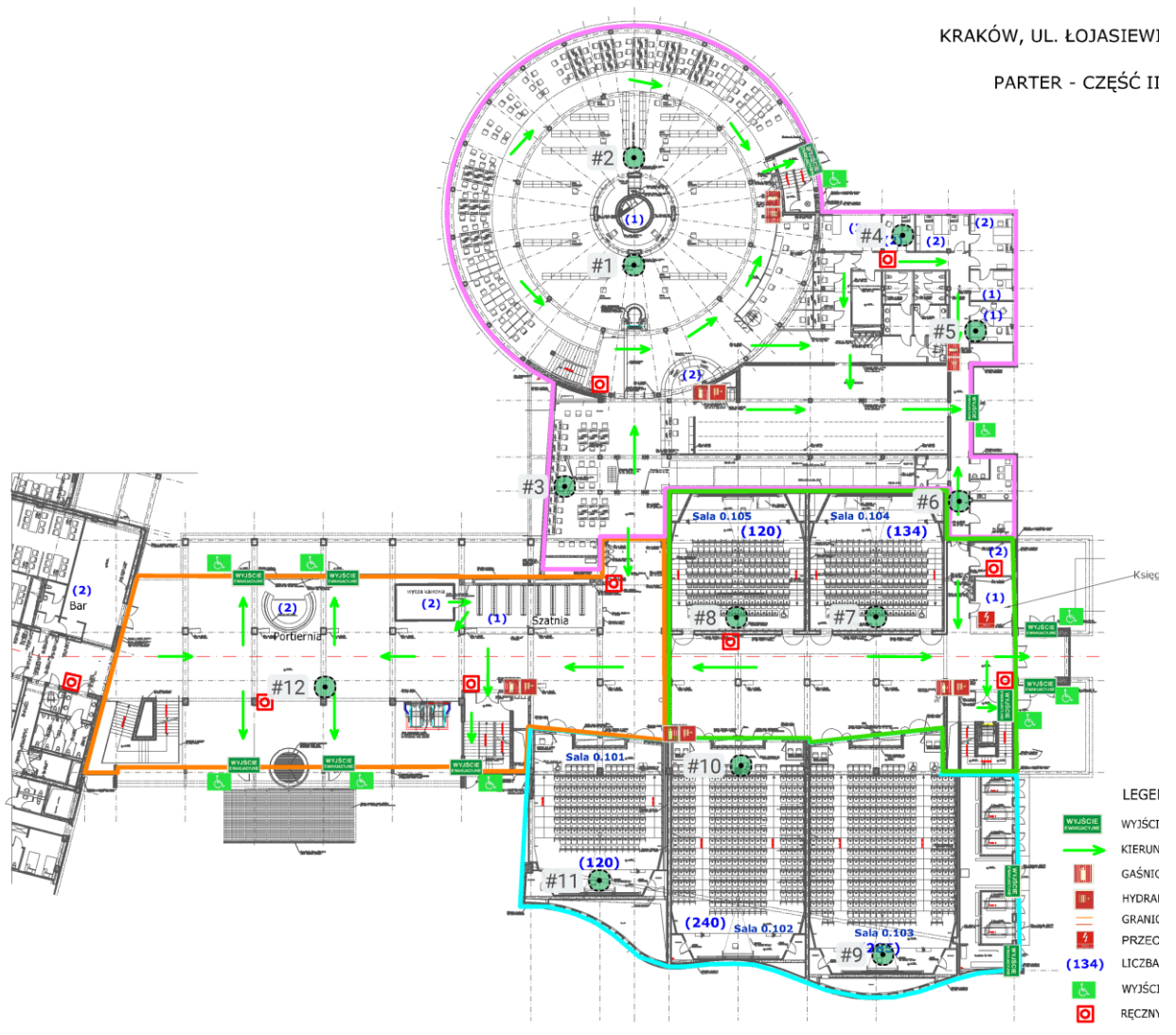
≥ -30 dBm

Access Points on Parter cz2

WYDZIAŁ ZARZĄDZANIA I KOMUNIKACJI SPOŁECZNEJ

KRAKÓW, UL. ŁOJASIEWI

PARTER - CZĘŚĆ II



My Access Points on Parter cz2

Simulated Access Points on Parter cz2

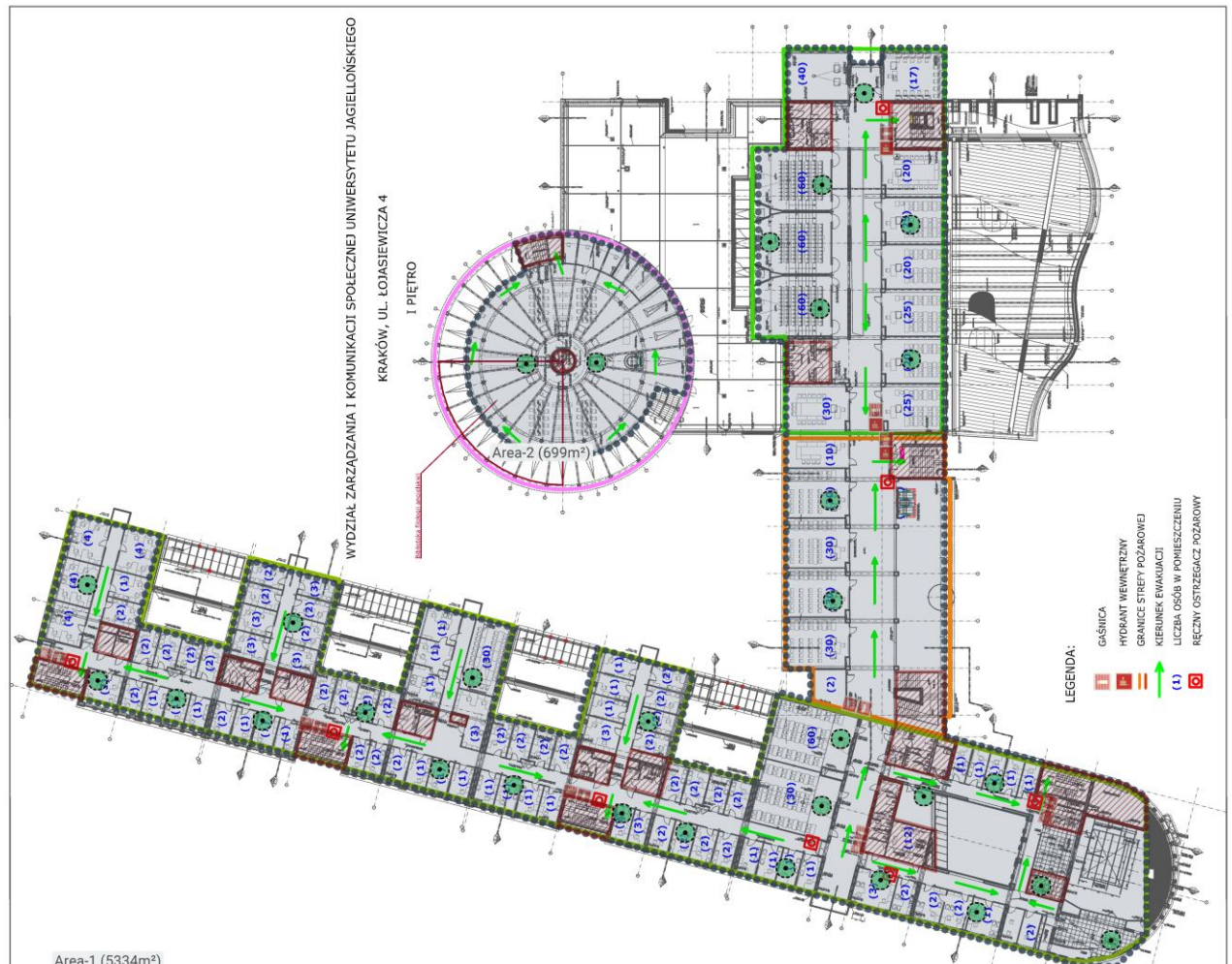
AP #	Access Point			
1	Simulated AP-19		Aruba AP-303	
	802.11n	6	10 mW	Aruba AP-303 2.4GHz
	802.11ac	120	25 mW	Aruba AP-303 5GHz
	Bluetooth	-	1 mW	Aruba AP-303 BLE
2	Simulated AP-20		Aruba AP-303	
	802.11n	1	10 mW	Aruba AP-303 2.4GHz
	802.11ac	132	25 mW	Aruba AP-303 5GHz
	Bluetooth	-	1 mW	Aruba AP-303 BLE
3	Simulated AP-21		Aruba AP-303	
	802.11n	1	10 mW	Aruba AP-303 2.4GHz
	802.11ac	48	25 mW	Aruba AP-303 5GHz
	Bluetooth	-	1 mW	Aruba AP-303 BLE
4	Simulated AP-22		Aruba AP-303	
	802.11n	11	10 mW	Aruba AP-303 2.4GHz
	802.11ac	36	25 mW	Aruba AP-303 5GHz
	Bluetooth	-	1 mW	Aruba AP-303 BLE
5	Simulated AP-23		Aruba AP-303	
	802.11n	1	10 mW	Aruba AP-303 2.4GHz
	802.11ac	100	25 mW	Aruba AP-303 5GHz
	Bluetooth	-	1 mW	Aruba AP-303 BLE
6	Simulated AP-24		Aruba AP-303	
	802.11n	6	10 mW	Aruba AP-303 2.4GHz
	802.11ac	108	25 mW	Aruba AP-303 5GHz
	Bluetooth	-	1 mW	Aruba AP-303 BLE
7	Simulated AP-25		Aruba AP-303	
	802.11n	1	10 mW	Aruba AP-303 2.4GHz

Wi-Fi Network Report

	802.11ac	124	25 mW	Aruba AP-303 5GHz
	Bluetooth	-	1 mW	Aruba AP-303 BLE
8	Simulated AP-26		Aruba AP-303	
	802.11n	11	10 mW	Aruba AP-303 2.4GHz
	802.11ac	56	25 mW	Aruba AP-303 5GHz
	Bluetooth	-	1 mW	Aruba AP-303 BLE
9	Simulated AP-27		Aruba AP-303	
	802.11n	1	10 mW	Aruba AP-303 2.4GHz
	802.11ac	44	25 mW	Aruba AP-303 5GHz
	Bluetooth	-	1 mW	Aruba AP-303 BLE
10	Simulated AP-28		Aruba AP-303	
	802.11n	6	10 mW	Aruba AP-303 2.4GHz
	802.11ac	64	25 mW	Aruba AP-303 5GHz
	Bluetooth	-	1 mW	Aruba AP-303 BLE
11	Simulated AP-29		Aruba AP-303	
	802.11n	11	10 mW	Aruba AP-303 2.4GHz
	802.11ac	112	25 mW	Aruba AP-303 5GHz
	Bluetooth	-	1 mW	Aruba AP-303 BLE
12	Simulated AP-30		Aruba AP-303	
	802.11n	6	10 mW	Aruba AP-303 2.4GHz
	802.11ac	128	25 mW	Aruba AP-303 5GHz
	Bluetooth	-	1 mW	Aruba AP-303 BLE

Pietro 1

Survey routes and Access Points for Pietro 1



View as / Project Offset:

Generic Laptop (-3 dB/-3 dB)

Area-1 (4,334 m²)

Coverage Requirement: **Ekahau Best Practices**

2.4 GHz

Signal Strength Min **-67.0 dBm**

Signal-to-Noise Ratio Min **20.0 dB**

Data Rate Min **24 Mbps**

Channel Interference Max **2 at min. -85.0 dBm**

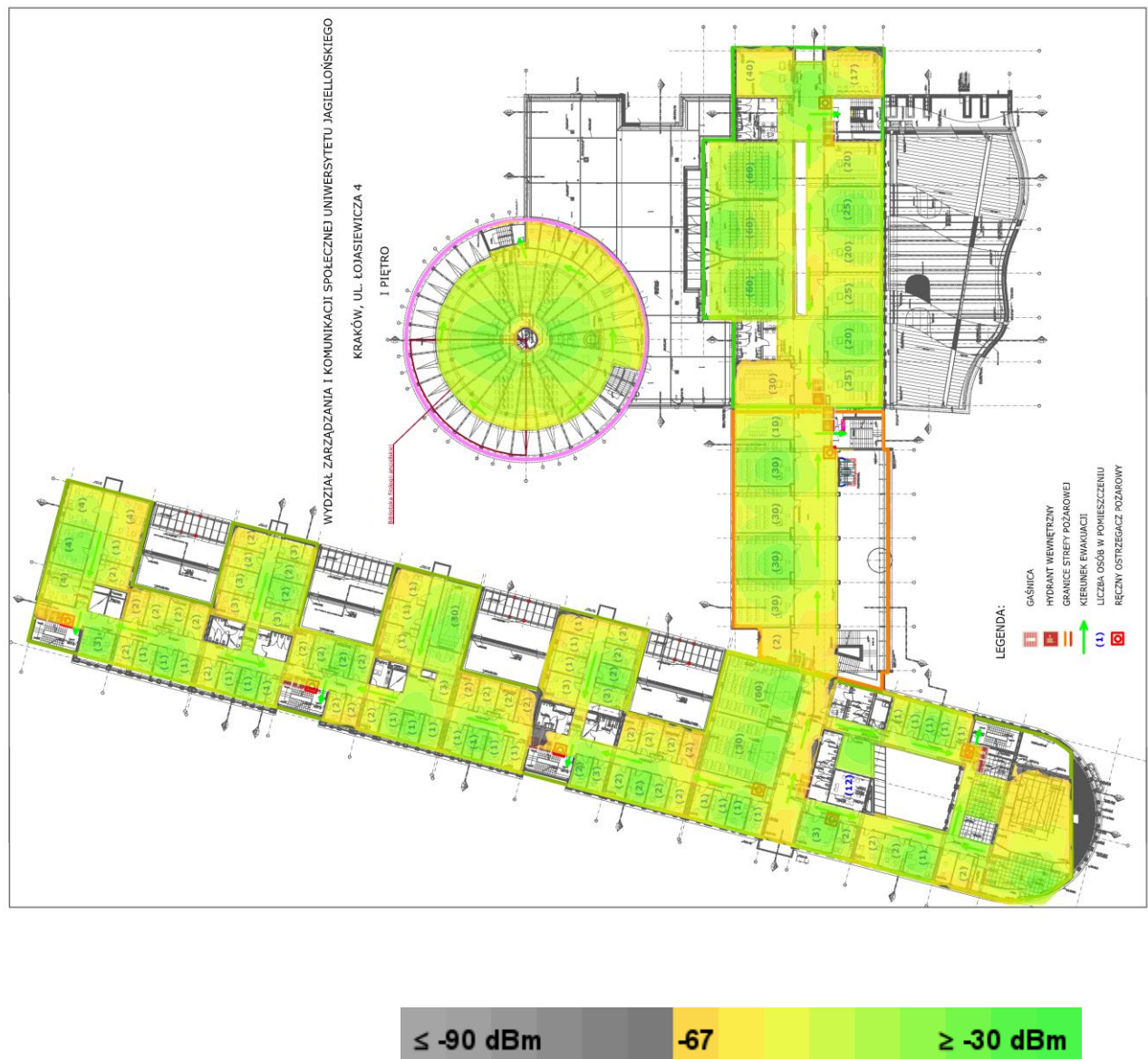
Round Trip Time (RTT) Max **200 ms**

Wi-Fi Network Report

	Packet Loss Max	0.0 %
5 GHz	Signal Strength Min	-67.0 dBm
	Secondary Signal Strength Min	-67.0 dBm
	Signal-to-Noise Ratio Min	25.0 dB
	Data Rate Min	24 Mbps
	Channel Interference Max	1 at min. -85.0 dBm
	Round Trip Time (RTT) Max	200 ms
	Packet Loss Max	0.0 %

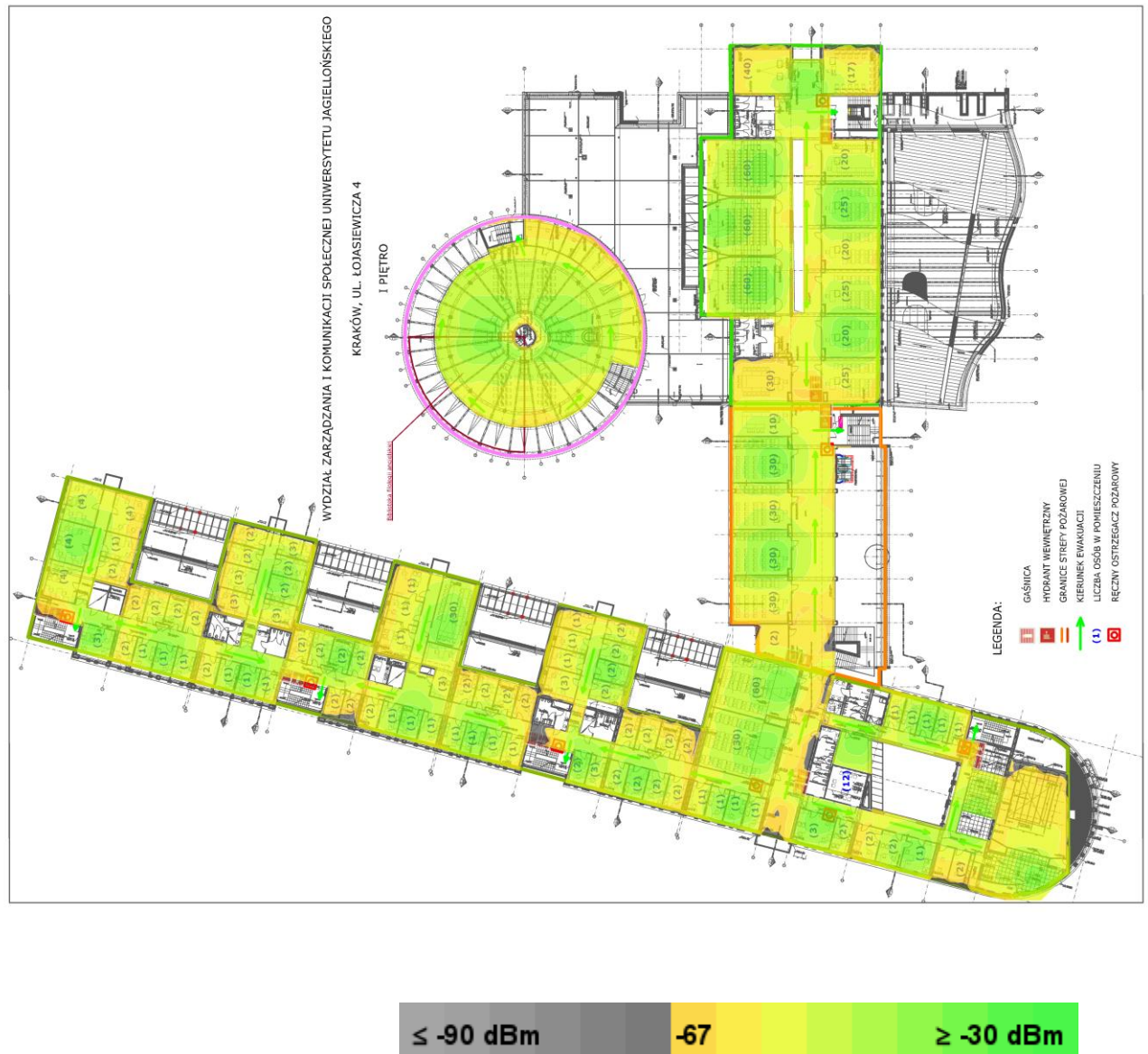
Signal Strength for Pietro 1 on 2.4 GHz band

Signal Strength - sometimes called coverage - is the most basic requirement for a wireless network. As a general guideline, low signal strength means unreliable connections, and low data throughput.

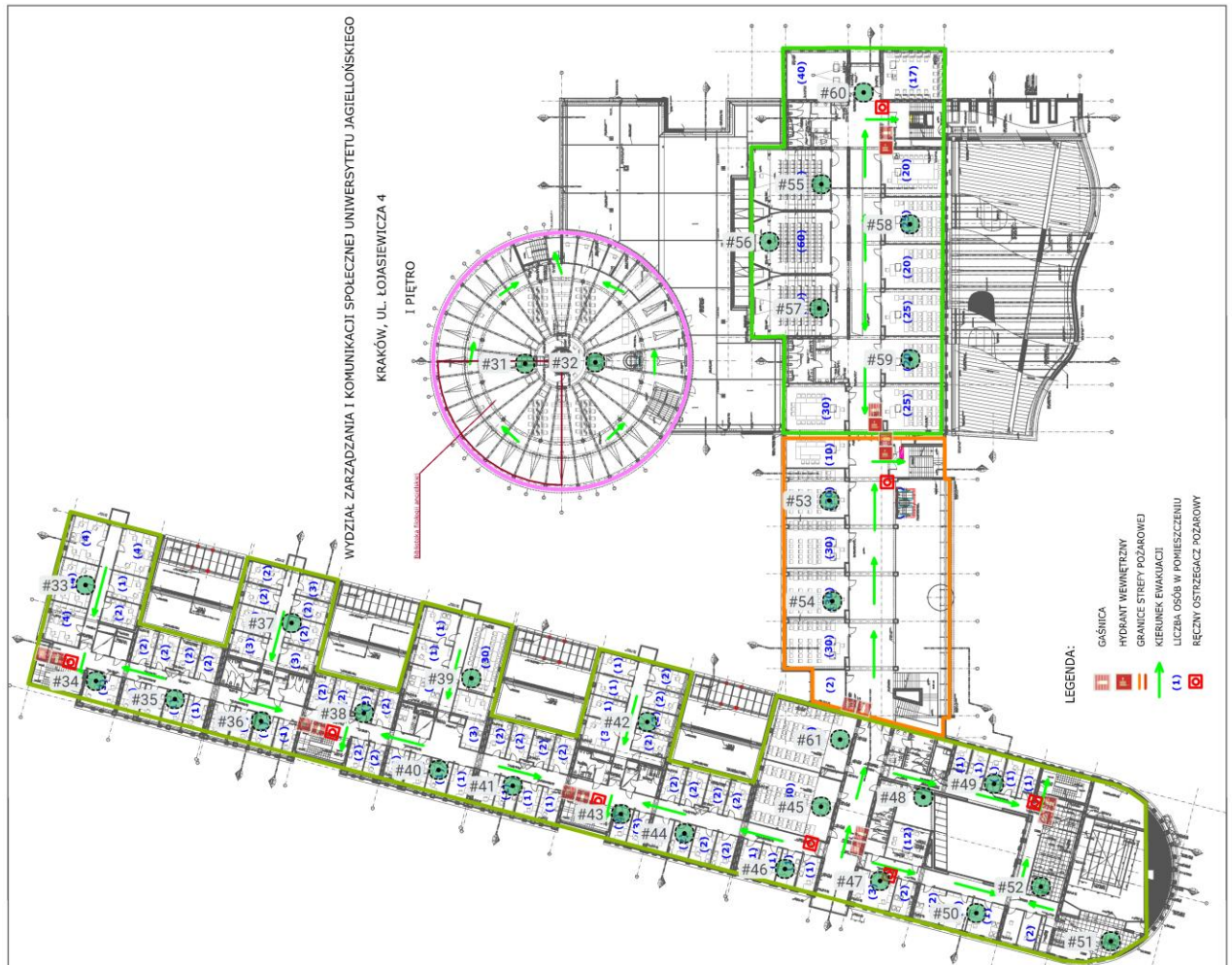


Signal Strength for Pietro 1 on 5 GHz band

Signal Strength - sometimes called coverage - is the most basic requirement for a wireless network. As a general guideline, low signal strength means unreliable connections, and low data throughput.



Access Points on Pietro 1



My Access Points on Pietro 1

Simulated Access Points on Pietro 1

AP #	Access Point			
31	Simulated AP-31		Aruba AP-303	
	802.11n	11	10 mW	Aruba AP-303 2.4GHz
	802.11ac	44	25 mW	Aruba AP-303 5GHz
	Bluetooth	-	1 mW	Aruba AP-303 BLE
32	Simulated AP-32		Aruba AP-303	
	802.11n	1	10 mW	Aruba AP-303 2.4GHz
	802.11ac	64	25 mW	Aruba AP-303 5GHz
	Bluetooth	-	1 mW	Aruba AP-303 BLE
33	Simulated AP-33		Aruba AP-303	
	802.11n	6	10 mW	Aruba AP-303 2.4GHz
	802.11ac	128	25 mW	Aruba AP-303 5GHz
	Bluetooth	-	1 mW	Aruba AP-303 BLE
34	Simulated AP-34		Aruba AP-303	
	802.11n	11	10 mW	Aruba AP-303 2.4GHz
	802.11ac	136	25 mW	Aruba AP-303 5GHz
	Bluetooth	-	1 mW	Aruba AP-303 BLE
35	Simulated AP-35		Aruba AP-303	
	802.11n	1	10 mW	Aruba AP-303 2.4GHz
	802.11ac	104	25 mW	Aruba AP-303 5GHz
	Bluetooth	-	1 mW	Aruba AP-303 BLE
36	Simulated AP-36		Aruba AP-303	
	802.11n	6	10 mW	Aruba AP-303 2.4GHz
	802.11ac	60	25 mW	Aruba AP-303 5GHz
	Bluetooth	-	1 mW	Aruba AP-303 BLE
37	Simulated AP-37		Aruba AP-303	
	802.11n	1	10 mW	Aruba AP-303 2.4GHz

Wi-Fi Network Report

	802.11ac	116	25 mW	Aruba AP-303 5GHz
	Bluetooth	-	1 mW	Aruba AP-303 BLE
38	Simulated AP-38		Aruba AP-303	
	802.11n	11	10 mW	Aruba AP-303 2.4GHz
	802.11ac	132	25 mW	Aruba AP-303 5GHz
	Bluetooth	-	1 mW	Aruba AP-303 BLE
39	Simulated AP-39		Aruba AP-303	
	802.11n	6	10 mW	Aruba AP-303 2.4GHz
	802.11ac	124	25 mW	Aruba AP-303 5GHz
	Bluetooth	-	1 mW	Aruba AP-303 BLE
40	Simulated AP-40		Aruba AP-303	
	802.11n	1	10 mW	Aruba AP-303 2.4GHz
	802.11ac	108	25 mW	Aruba AP-303 5GHz
	Bluetooth	-	1 mW	Aruba AP-303 BLE
41	Simulated AP-41		Aruba AP-303	
	802.11n	11	10 mW	Aruba AP-303 2.4GHz
	802.11ac	36	25 mW	Aruba AP-303 5GHz
	Bluetooth	-	1 mW	Aruba AP-303 BLE
42	Simulated AP-42		Aruba AP-303	
	802.11n	11	10 mW	Aruba AP-303 2.4GHz
	802.11ac	56	25 mW	Aruba AP-303 5GHz
	Bluetooth	-	1 mW	Aruba AP-303 BLE
43	Simulated AP-43		Aruba AP-303	
	802.11n	6	10 mW	Aruba AP-303 2.4GHz
	802.11ac	100	25 mW	Aruba AP-303 5GHz
	Bluetooth	-	1 mW	Aruba AP-303 BLE
44	Simulated AP-44		Aruba AP-303	
	802.11n	1	10 mW	Aruba AP-303 2.4GHz
	802.11ac	136	25 mW	Aruba AP-303 5GHz
	Bluetooth	-	1 mW	Aruba AP-303 BLE

Wi-Fi Network Report

45	Simulated AP-45		Aruba AP-303	
	802.11n	6	10 mW	Aruba AP-303 2.4GHz
	802.11ac	104	25 mW	Aruba AP-303 5GHz
	Bluetooth	-	1 mW	Aruba AP-303 BLE
46	Simulated AP-46		Aruba AP-303	
	802.11n	11	10 mW	Aruba AP-303 2.4GHz
	802.11ac	40	25 mW	Aruba AP-303 5GHz
	Bluetooth	-	1 mW	Aruba AP-303 BLE
47	Simulated AP-47		Aruba AP-303	
	802.11n	1	10 mW	Aruba AP-303 2.4GHz
	802.11ac	60	25 mW	Aruba AP-303 5GHz
	Bluetooth	-	1 mW	Aruba AP-303 BLE
48	Simulated AP-48		Aruba AP-303	
	802.11n	11	10 mW	Aruba AP-303 2.4GHz
	802.11ac	120	25 mW	Aruba AP-303 5GHz
	Bluetooth	-	1 mW	Aruba AP-303 BLE
49	Simulated AP-49		Aruba AP-303	
	802.11n	1	10 mW	Aruba AP-303 2.4GHz
	802.11ac	36	25 mW	Aruba AP-303 5GHz
	Bluetooth	-	1 mW	Aruba AP-303 BLE
50	Simulated AP-50		Aruba AP-303	
	802.11n	6	10 mW	Aruba AP-303 2.4GHz
	802.11ac	140	25 mW	Aruba AP-303 5GHz
	Bluetooth	-	1 mW	Aruba AP-303 BLE
51	Simulated AP-51		Aruba AP-303	
	802.11n	1	10 mW	Aruba AP-303 2.4GHz
	802.11ac	116	25 mW	Aruba AP-303 5GHz
	Bluetooth	-	1 mW	Aruba AP-303 BLE
52	Simulated AP-52		Aruba AP-303	
	802.11n	11	10 mW	Aruba AP-303 2.4GHz

Wi-Fi Network Report

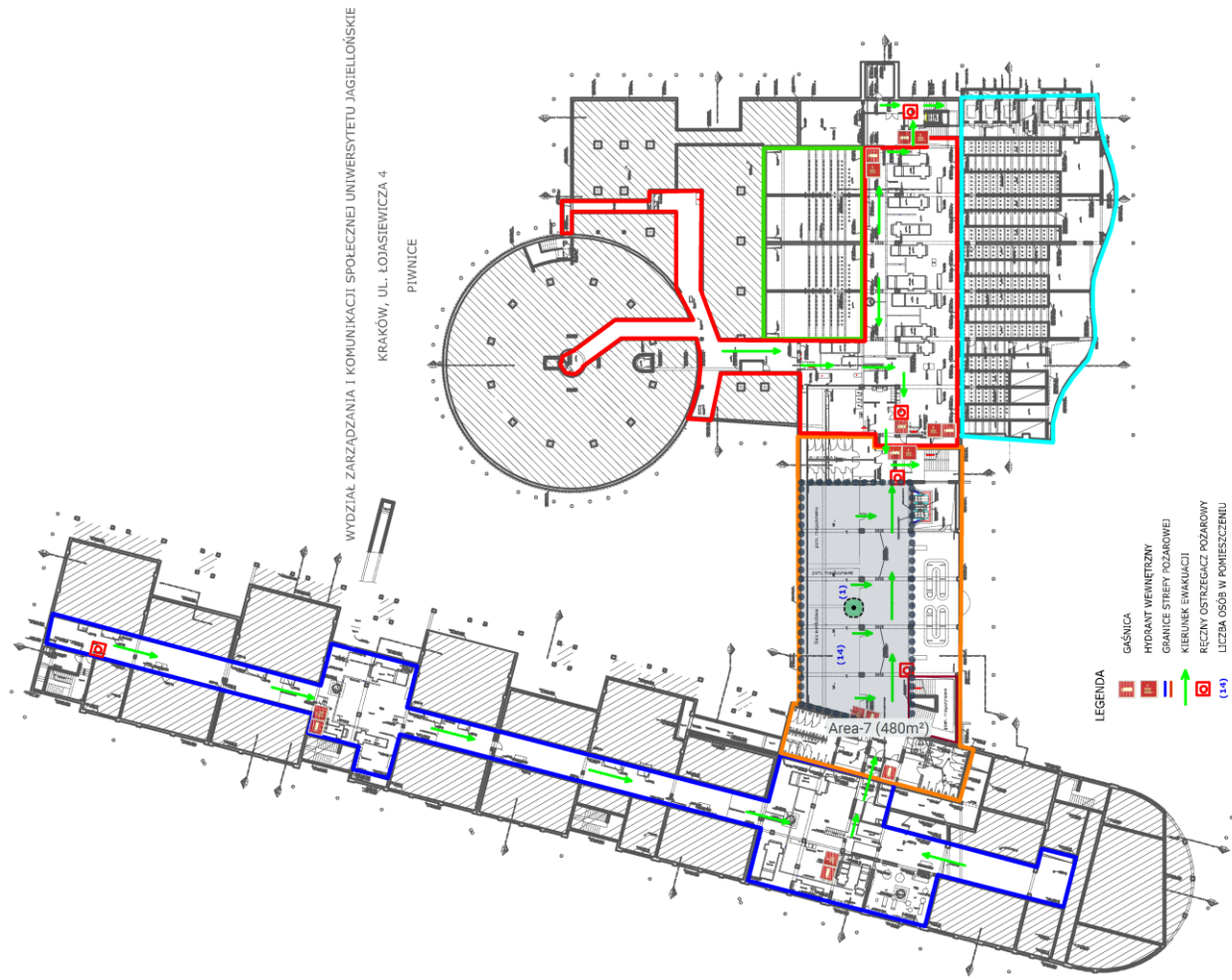
	802.11ac	52	25 mW	Aruba AP-303 5GHz
	Bluetooth	-	1 mW	Aruba AP-303 BLE
53	Simulated AP-53		Aruba AP-303	
	802.11n	11	10 mW	Aruba AP-303 2.4GHz
	802.11ac	128	25 mW	Aruba AP-303 5GHz
	Bluetooth	-	1 mW	Aruba AP-303 BLE
54	Simulated AP-54		Aruba AP-303	
	802.11n	6	10 mW	Aruba AP-303 2.4GHz
	802.11ac	112	25 mW	Aruba AP-303 5GHz
	Bluetooth	-	1 mW	Aruba AP-303 BLE
55	Simulated AP-55		Aruba AP-303	
	802.11n	1	10 mW	Aruba AP-303 2.4GHz
	802.11ac	108	25 mW	Aruba AP-303 5GHz
	Bluetooth	-	1 mW	Aruba AP-303 BLE
56	Simulated AP-56		Aruba AP-303	
	802.11n	11	10 mW	Aruba AP-303 2.4GHz
	802.11ac	140	25 mW	Aruba AP-303 5GHz
	Bluetooth	-	1 mW	Aruba AP-303 BLE
57	Simulated AP-57		Aruba AP-303	
	802.11n	6	10 mW	Aruba AP-303 2.4GHz
	802.11ac	40	25 mW	Aruba AP-303 5GHz
	Bluetooth	-	1 mW	Aruba AP-303 BLE
58	Simulated AP-58		Aruba AP-303	
	802.11n	11	10 mW	Aruba AP-303 2.4GHz
	802.11ac	60	25 mW	Aruba AP-303 5GHz
	Bluetooth	-	1 mW	Aruba AP-303 BLE
59	Simulated AP-59		Aruba AP-303	
	802.11n	1	10 mW	Aruba AP-303 2.4GHz
	802.11ac	52	25 mW	Aruba AP-303 5GHz
	Bluetooth	-	1 mW	Aruba AP-303 BLE

Wi-Fi Network Report

60	Simulated AP-60		Aruba AP-303	
	802.11n	6	10 mW	Aruba AP-303 2.4GHz
	802.11ac	120	25 mW	Aruba AP-303 5GHz
	Bluetooth	-	1 mW	Aruba AP-303 BLE
61	Simulated AP-61		Aruba AP-303	
	802.11n	1	10 mW	Aruba AP-303 2.4GHz
	802.11ac	48	25 mW	Aruba AP-303 5GHz
	Bluetooth	-	1 mW	Aruba AP-303 BLE

Piwnice

Survey routes and Access Points for Piwnice



View as / Project Offset:

Generic Laptop (-3 dB/-3 dB)

Area-7 (480 m²)

Coverage Requirement: **EkaHau Best Practices**

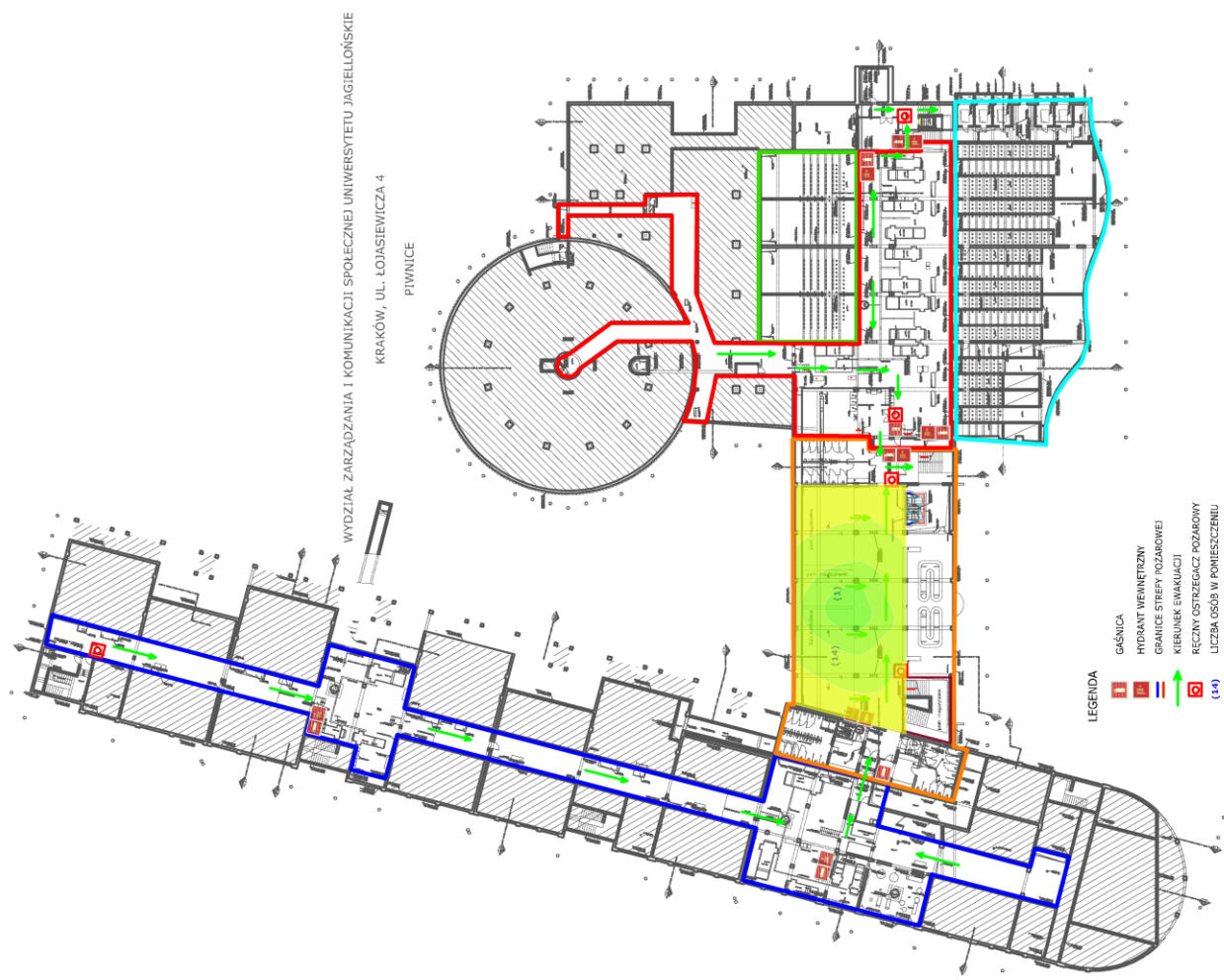
2.4 GHz	Signal Strength Min	-67.0 dBm
	Signal-to-Noise Ratio Min	20.0 dB
	Data Rate Min	24 Mbps
	Channel Interference Max	2 at min. -85.0 dBm
	Round Trip Time (RTT) Max	200 ms

Wi-Fi Network Report

	Packet Loss Max	0.0 %
5 GHz	Signal Strength Min	-67.0 dBm
	Secondary Signal Strength Min	-67.0 dBm
	Signal-to-Noise Ratio Min	25.0 dB
	Data Rate Min	24 Mbps
	Channel Interference Max	1 at min. -85.0 dBm
	Round Trip Time (RTT) Max	200 ms
	Packet Loss Max	0.0 %

Signal Strength for Piwnice on 2.4 GHz band

Signal Strength - sometimes called coverage - is the most basic requirement for a wireless network. As a general guideline, low signal strength means unreliable connections, and low data throughput.



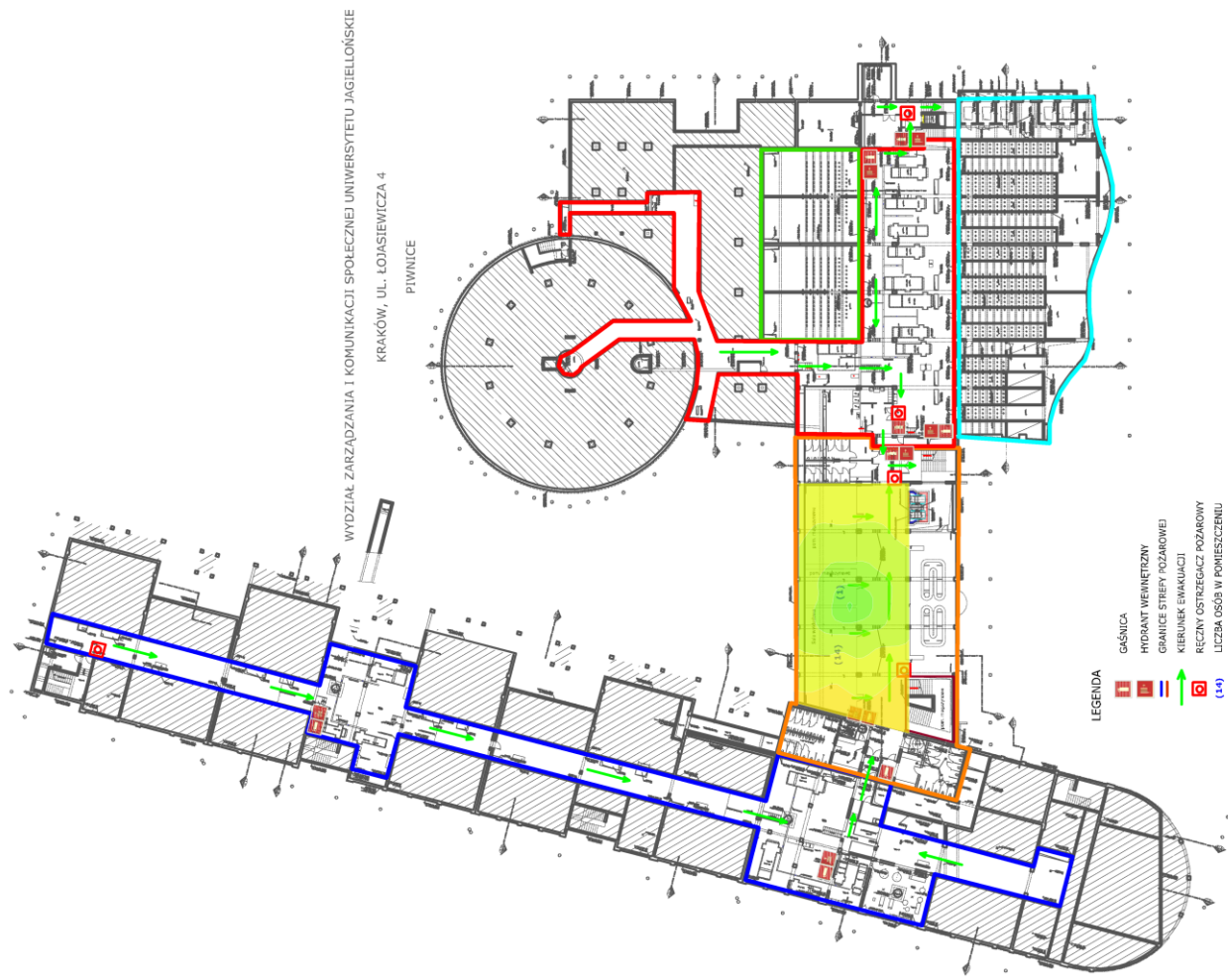
≤ -90 dBm

-67

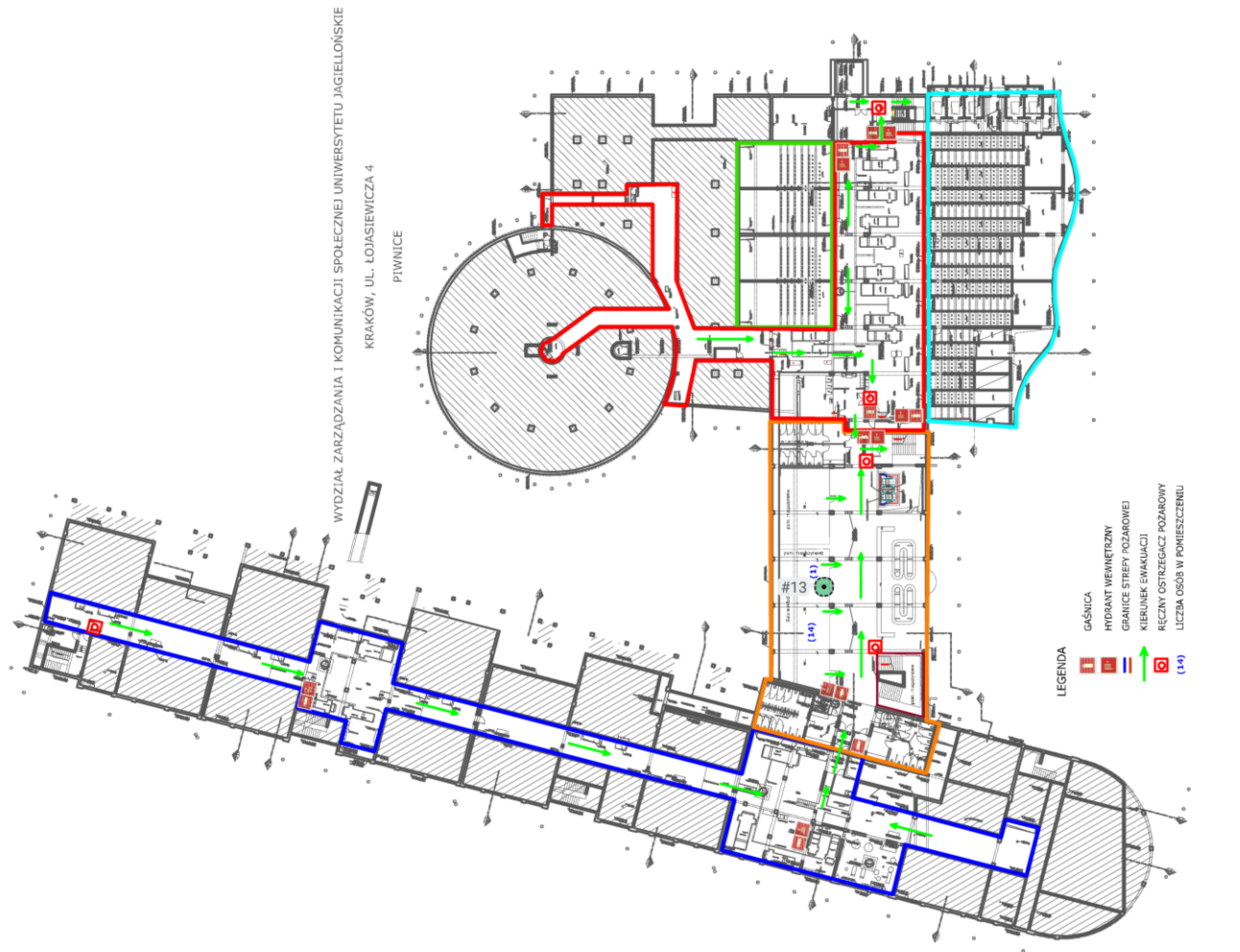
≥ -30 dBm

Signal Strength for Piwnice on 5 GHz band

Signal Strength - sometimes called coverage - is the most basic requirement for a wireless network. As a general guideline, low signal strength means unreliable connections, and low data throughput.



Access Points on Piwnice



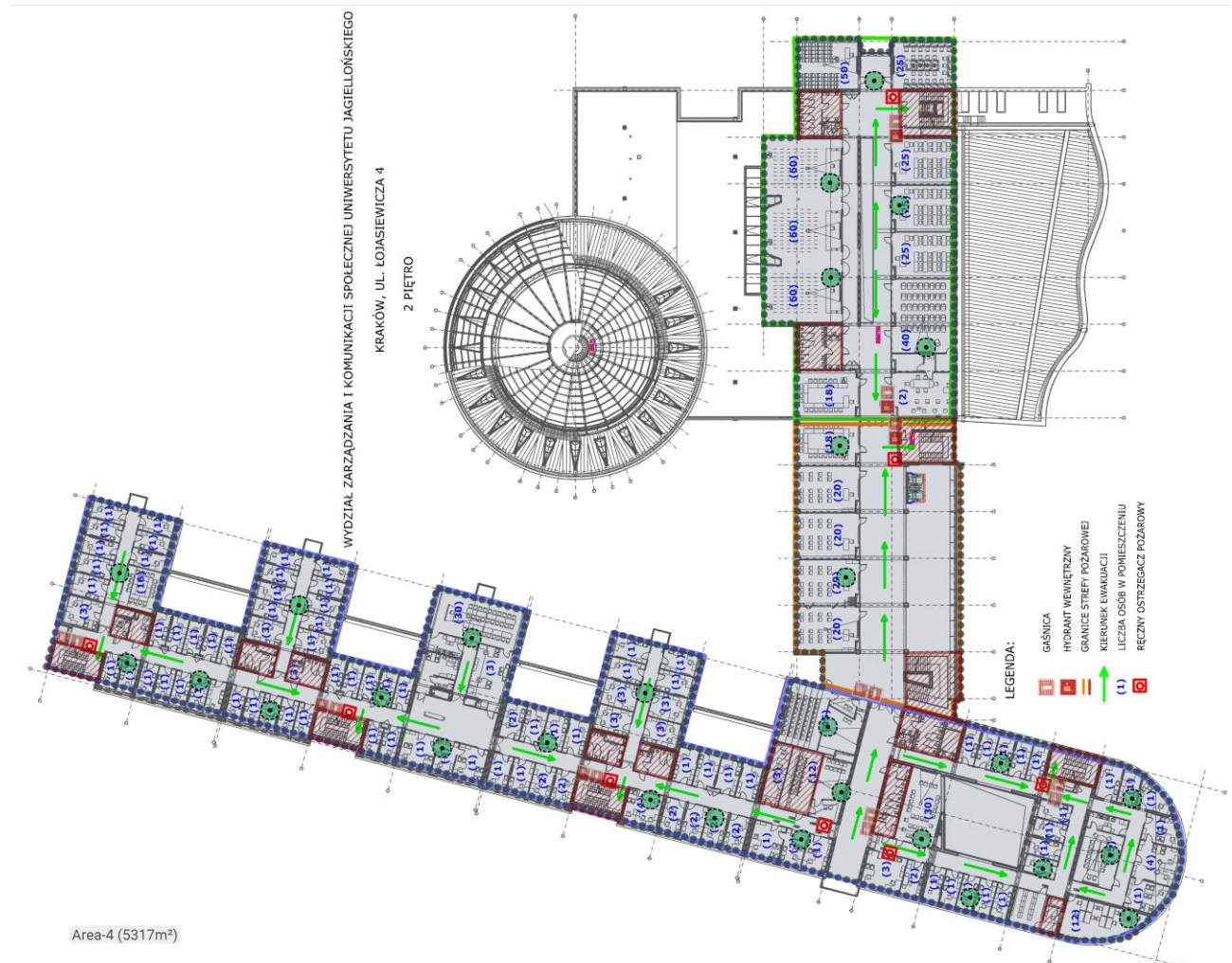
My Access Points on Piwnice

Simulated Access Points on Piwnice

AP #	Access Point			
13	Simulated AP-1		Aruba AP-303	
	802.11n	1	10 mW	Aruba AP-303 2.4GHz
	802.11ac	56	25 mW	Aruba AP-303 5GHz
	Bluetooth	-	1 mW	Aruba AP-303 BLE

Piętro 2

Survey routes and Access Points for Piętro 2



View as / Project Offset:

Generic Laptop (-3 dB/-3 dB)

Area-4 (4,350 m²)

Coverage Requirement: **Ekahau Best Practices**

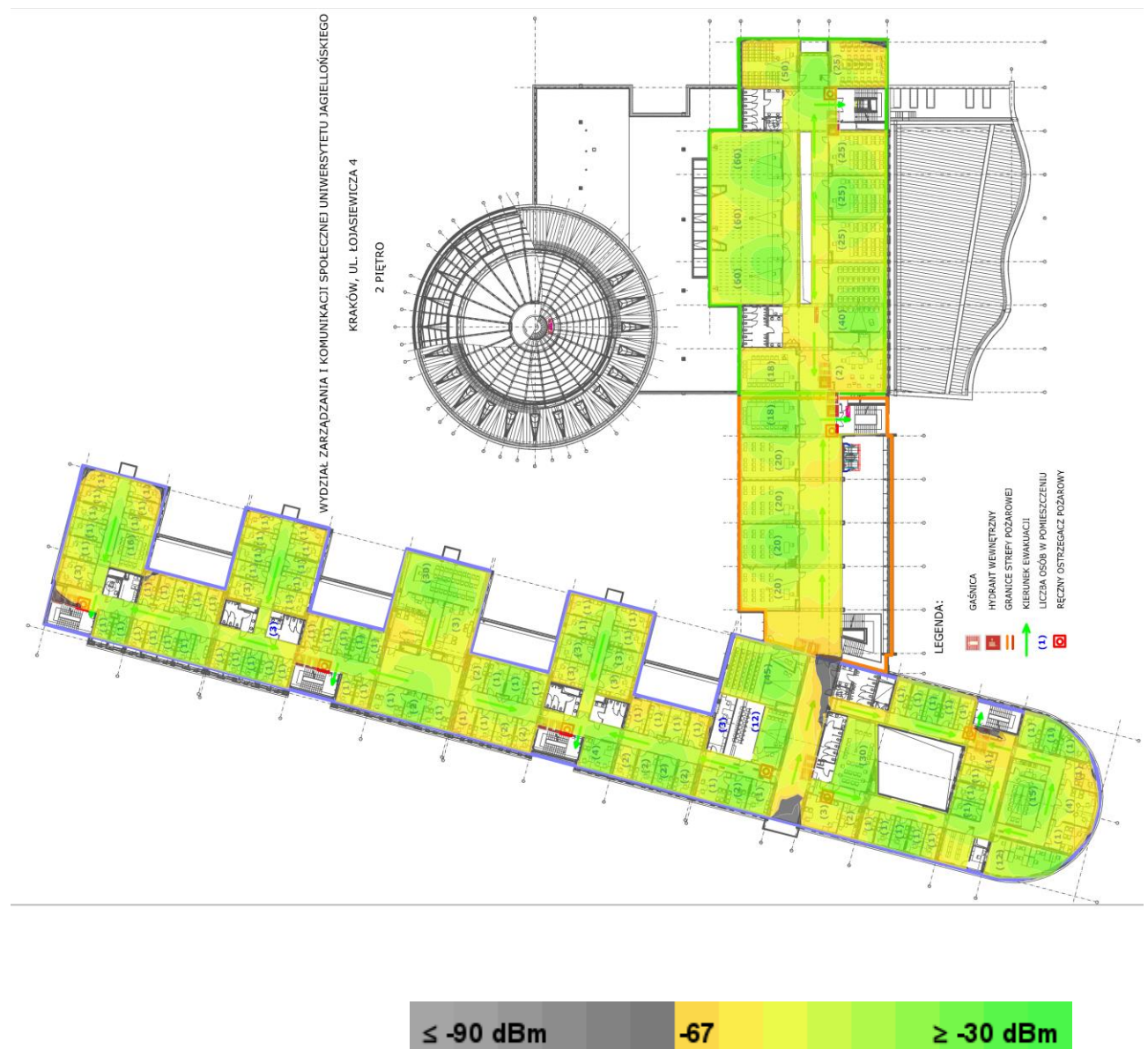
2.4 GHz	Signal Strength Min	-67.0 dBm
	Signal-to-Noise Ratio Min	20.0 dB
	Data Rate Min	24 Mbps
	Channel Interference Max	2 at min. -85.0 dBm
	Round Trip Time (RTT) Max	200 ms

Wi-Fi Network Report

	Packet Loss Max	0.0 %
5 GHz	Signal Strength Min	-67.0 dBm
	Secondary Signal Strength Min	-67.0 dBm
	Signal-to-Noise Ratio Min	25.0 dB
	Data Rate Min	24 Mbps
	Channel Interference Max	1 at min. -85.0 dBm
	Round Trip Time (RTT) Max	200 ms
	Packet Loss Max	0.0 %

Signal Strength for Piętro 2 on 2.4 GHz band

Signal Strength - sometimes called coverage - is the most basic requirement for a wireless network. As a general guideline, low signal strength means unreliable connections, and low data throughput.

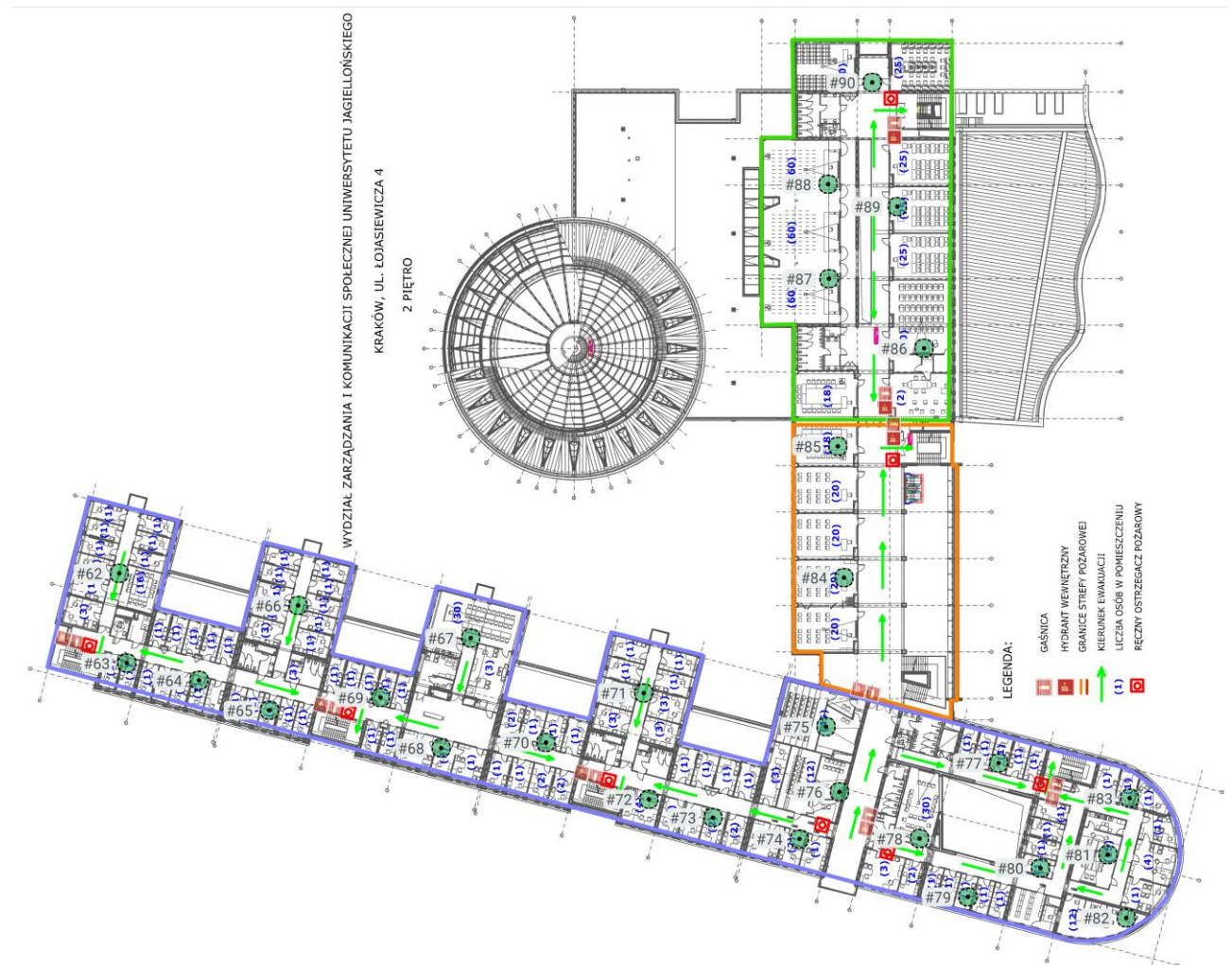


Signal Strength for Piętro 2 on 5 GHz band

Signal Strength - sometimes called coverage - is the most basic requirement for a wireless network. As a general guideline, low signal strength means unreliable connections, and low data throughput.



Access Points on Piętro 2



My Access Points on Piętro 2

Simulated Access Points on Piętro 2

AP #	Access Point			
62	Simulated AP-62		Aruba AP-303	
	802.11n	6	10 mW	Aruba AP-303 2.4GHz
	802.11ac	100	25 mW	Aruba AP-303 5GHz
	Bluetooth	-	1 mW	Aruba AP-303 BLE
63	Simulated AP-63		Aruba AP-303	
	802.11n	11	10 mW	Aruba AP-303 2.4GHz
	802.11ac	132	25 mW	Aruba AP-303 5GHz
	Bluetooth	-	1 mW	Aruba AP-303 BLE
64	Simulated AP-64		Aruba AP-303	
	802.11n	1	10 mW	Aruba AP-303 2.4GHz
	802.11ac	44	25 mW	Aruba AP-303 5GHz
	Bluetooth	-	1 mW	Aruba AP-303 BLE
65	Simulated AP-65		Aruba AP-303	
	802.11n	6	10 mW	Aruba AP-303 2.4GHz
	802.11ac	56	25 mW	Aruba AP-303 5GHz
	Bluetooth	-	1 mW	Aruba AP-303 BLE
66	Simulated AP-66		Aruba AP-303	
	802.11n	11	10 mW	Aruba AP-303 2.4GHz
	802.11ac	140	25 mW	Aruba AP-303 5GHz
	Bluetooth	-	1 mW	Aruba AP-303 BLE
67	Simulated AP-67		Aruba AP-303	
	802.11n	6	10 mW	Aruba AP-303 2.4GHz
	802.11ac	104	25 mW	Aruba AP-303 5GHz
	Bluetooth	-	1 mW	Aruba AP-303 BLE
68	Simulated AP-68		Aruba AP-303	
	802.11n	11	10 mW	Aruba AP-303 2.4GHz

Wi-Fi Network Report

	802.11ac	48	25 mW	Aruba AP-303 5GHz
	Bluetooth	-	1 mW	Aruba AP-303 BLE
69	Simulated AP-69		Aruba AP-303	
	802.11n	1	10 mW	Aruba AP-303 2.4GHz
	802.11ac	120	25 mW	Aruba AP-303 5GHz
	Bluetooth	-	1 mW	Aruba AP-303 BLE
70	Simulated AP-70		Aruba AP-303	
	802.11n	1	10 mW	Aruba AP-303 2.4GHz
	802.11ac	112	25 mW	Aruba AP-303 5GHz
	Bluetooth	-	1 mW	Aruba AP-303 BLE
71	Simulated AP-71		Aruba AP-303	
	802.11n	11	10 mW	Aruba AP-303 2.4GHz
	802.11ac	132	25 mW	Aruba AP-303 5GHz
	Bluetooth	-	1 mW	Aruba AP-303 BLE
72	Simulated AP-72		Aruba AP-303	
	802.11n	6	10 mW	Aruba AP-303 2.4GHz
	802.11ac	64	25 mW	Aruba AP-303 5GHz
	Bluetooth	-	1 mW	Aruba AP-303 BLE
73	Simulated AP-73		Aruba AP-303	
	802.11n	11	10 mW	Aruba AP-303 2.4GHz
	802.11ac	124	25 mW	Aruba AP-303 5GHz
	Bluetooth	-	1 mW	Aruba AP-303 BLE
74	Simulated AP-74		Aruba AP-303	
	802.11n	1	10 mW	Aruba AP-303 2.4GHz
	802.11ac	136	25 mW	Aruba AP-303 5GHz
	Bluetooth	-	1 mW	Aruba AP-303 BLE
75	Simulated AP-75		Aruba AP-303	
	802.11n	6	10 mW	Aruba AP-303 2.4GHz
	802.11ac	44	25 mW	Aruba AP-303 5GHz
	Bluetooth	-	1 mW	Aruba AP-303 BLE

Wi-Fi Network Report

76	Simulated AP-76		Aruba AP-303	
	802.11n	11	10 mW	Aruba AP-303 2.4GHz
	802.11ac	56	25 mW	Aruba AP-303 5GHz
	Bluetooth	-	1 mW	Aruba AP-303 BLE
77	Simulated AP-77		Aruba AP-303	
	802.11n	1	10 mW	Aruba AP-303 2.4GHz
	802.11ac	48	25 mW	Aruba AP-303 5GHz
	Bluetooth	-	1 mW	Aruba AP-303 BLE
78	Simulated AP-78		Aruba AP-303	
	802.11n	6	10 mW	Aruba AP-303 2.4GHz
	802.11ac	128	25 mW	Aruba AP-303 5GHz
	Bluetooth	-	1 mW	Aruba AP-303 BLE
79	Simulated AP-79		Aruba AP-303	
	802.11n	1	10 mW	Aruba AP-303 2.4GHz
	802.11ac	40	25 mW	Aruba AP-303 5GHz
	Bluetooth	-	1 mW	Aruba AP-303 BLE
80	Simulated AP-80		Aruba AP-303	
	802.11n	11	10 mW	Aruba AP-303 2.4GHz
	802.11ac	112	25 mW	Aruba AP-303 5GHz
	Bluetooth	-	1 mW	Aruba AP-303 BLE
81	Simulated AP-81		Aruba AP-303	
	802.11n	6	10 mW	Aruba AP-303 2.4GHz
	802.11ac	100	25 mW	Aruba AP-303 5GHz
	Bluetooth	-	1 mW	Aruba AP-303 BLE
82	Simulated AP-82		Aruba AP-303	
	802.11n	1	10 mW	Aruba AP-303 2.4GHz
	802.11ac	132	25 mW	Aruba AP-303 5GHz
	Bluetooth	-	1 mW	Aruba AP-303 BLE
83	Simulated AP-83		Aruba AP-303	
	802.11n	11	10 mW	Aruba AP-303 2.4GHz

Wi-Fi Network Report

	802.11ac	64	25 mW	Aruba AP-303 5GHz
	Bluetooth	-	1 mW	Aruba AP-303 BLE
84	Simulated AP-84		Aruba AP-303	
	802.11n	1	10 mW	Aruba AP-303 2.4GHz
	802.11ac	100	25 mW	Aruba AP-303 5GHz
	Bluetooth	-	1 mW	Aruba AP-303 BLE
85	Simulated AP-85		Aruba AP-303	
	802.11n	6	10 mW	Aruba AP-303 2.4GHz
	802.11ac	116	25 mW	Aruba AP-303 5GHz
	Bluetooth	-	1 mW	Aruba AP-303 BLE
86	Simulated AP-86		Aruba AP-303	
	802.11n	11	10 mW	Aruba AP-303 2.4GHz
	802.11ac	108	25 mW	Aruba AP-303 5GHz
	Bluetooth	-	1 mW	Aruba AP-303 BLE
87	Simulated AP-87		Aruba AP-303	
	802.11n	1	10 mW	Aruba AP-303 2.4GHz
	802.11ac	52	25 mW	Aruba AP-303 5GHz
	Bluetooth	-	1 mW	Aruba AP-303 BLE
88	Simulated AP-89		Aruba AP-303	
	802.11n	11	10 mW	Aruba AP-303 2.4GHz
	802.11ac	36	25 mW	Aruba AP-303 5GHz
	Bluetooth	-	1 mW	Aruba AP-303 BLE
89	Simulated AP-90		Aruba AP-303	
	802.11n	6	10 mW	Aruba AP-303 2.4GHz
	802.11ac	64	25 mW	Aruba AP-303 5GHz
	Bluetooth	-	1 mW	Aruba AP-303 BLE
90	Simulated AP-91		Aruba AP-303	
	802.11n	1	10 mW	Aruba AP-303 2.4GHz
	802.11ac	124	25 mW	Aruba AP-303 5GHz
	Bluetooth	-	1 mW	Aruba AP-303 BLE

Piętro 3

Survey routes and Access Points for Piętro 3



View as / Project Offset:

Generic Laptop (-3 dB/-3 dB)

Area-3 (4,399 m²)

Coverage Requirement: Ekahau Best Practices		
2.4 GHz	Signal Strength Min	-67.0 dBm
	Signal-to-Noise Ratio Min	20.0 dB
	Data Rate Min	24 Mbps
	Channel Interference Max	2 at min. -85.0 dBm
	Round Trip Time (RTT) Max	200 ms

Wi-Fi Network Report

	Packet Loss Max	0.0 %
5 GHz	Signal Strength Min	-67.0 dBm
	Secondary Signal Strength Min	-67.0 dBm
	Signal-to-Noise Ratio Min	25.0 dB
	Data Rate Min	24 Mbps
	Channel Interference Max	1 at min. -85.0 dBm
	Round Trip Time (RTT) Max	200 ms
	Packet Loss Max	0.0 %

Signal Strength for Piętro 3 on 2.4 GHz band

Signal Strength - sometimes called coverage - is the most basic requirement for a wireless network. As a general guideline, low signal strength means unreliable connections, and low data throughput.

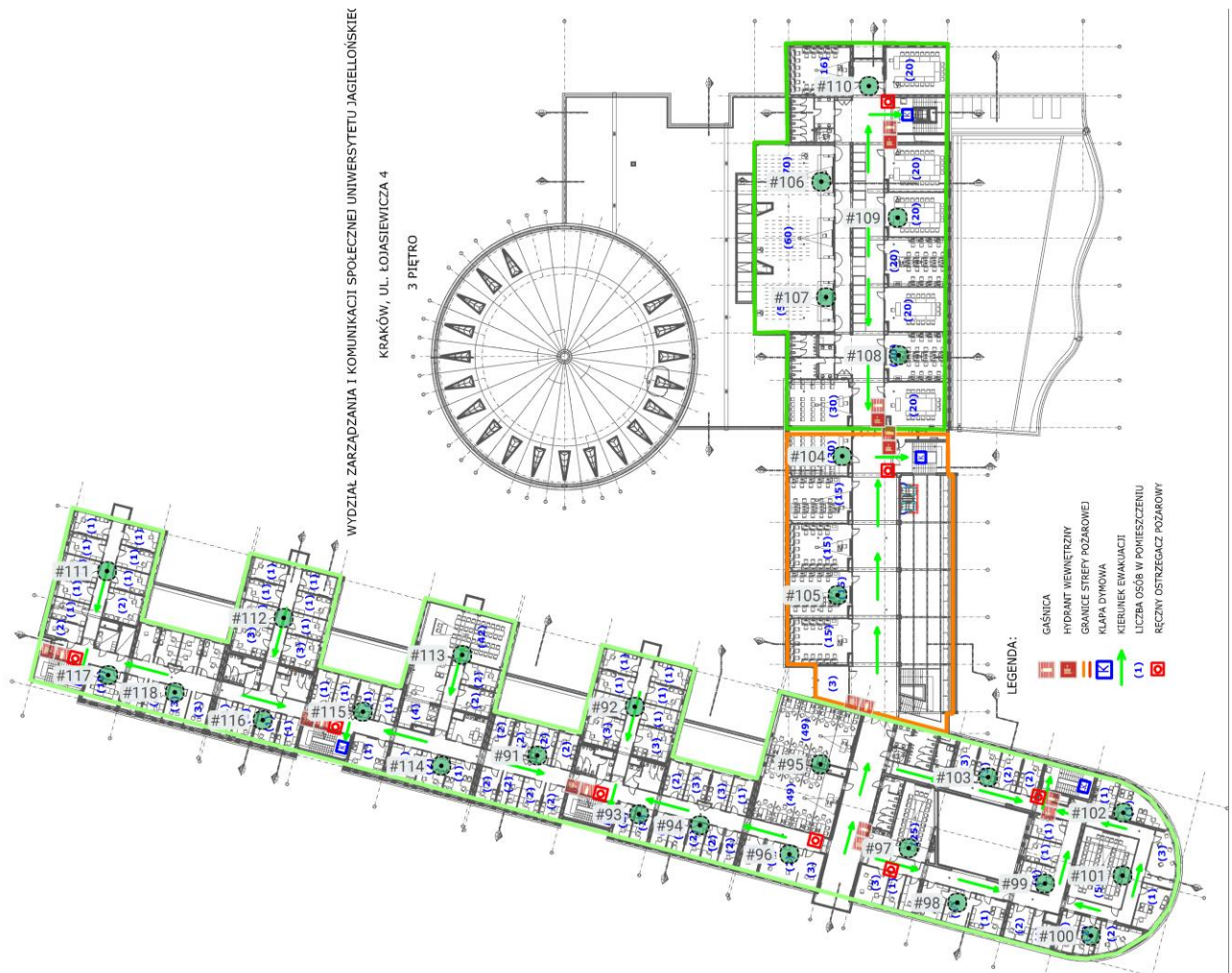


Signal Strength for Piętro 3 on 5 GHz band

Signal Strength - sometimes called coverage - is the most basic requirement for a wireless network. As a general guideline, low signal strength means unreliable connections, and low data throughput.



Access Points on Piętro 3



My Access Points on Piętro 3

Simulated Access Points on Piętro 3

AP #	Access Point			
91	Simulated AP-100		Aruba AP-303	
	802.11n	1	10 mW	Aruba AP-303 2.4GHz
	802.11ac	104	25 mW	Aruba AP-303 5GHz
	Bluetooth	-	1 mW	Aruba AP-303 BLE
92	Simulated AP-101		Aruba AP-303	
	802.11n	11	10 mW	Aruba AP-303 2.4GHz
	802.11ac	112	25 mW	Aruba AP-303 5GHz
	Bluetooth	-	1 mW	Aruba AP-303 BLE
93	Simulated AP-102		Aruba AP-303	
	802.11n	6	10 mW	Aruba AP-303 2.4GHz
	802.11ac	128	25 mW	Aruba AP-303 5GHz
	Bluetooth	-	1 mW	Aruba AP-303 BLE
94	Simulated AP-103		Aruba AP-303	
	802.11n	1	10 mW	Aruba AP-303 2.4GHz
	802.11ac	40	25 mW	Aruba AP-303 5GHz
	Bluetooth	-	1 mW	Aruba AP-303 BLE
95	Simulated AP-104		Aruba AP-303	
	802.11n	6	10 mW	Aruba AP-303 2.4GHz
	802.11ac	56	25 mW	Aruba AP-303 5GHz
	Bluetooth	-	1 mW	Aruba AP-303 BLE
96	Simulated AP-105		Aruba AP-303	
	802.11n	11	10 mW	Aruba AP-303 2.4GHz
	802.11ac	120	25 mW	Aruba AP-303 5GHz
	Bluetooth	-	1 mW	Aruba AP-303 BLE
97	Simulated AP-106		Aruba AP-303	
	802.11n	1	10 mW	Aruba AP-303 2.4GHz

Wi-Fi Network Report

	802.11ac	108	25 mW	Aruba AP-303 5GHz
	Bluetooth	-	1 mW	Aruba AP-303 BLE
98	Simulated AP-107		Aruba AP-303	
	802.11n	6	10 mW	Aruba AP-303 2.4GHz
	802.11ac	36	25 mW	Aruba AP-303 5GHz
	Bluetooth	-	1 mW	Aruba AP-303 BLE
99	Simulated AP-108		Aruba AP-303	
	802.11n	1	10 mW	Aruba AP-303 2.4GHz
	802.11ac	116	25 mW	Aruba AP-303 5GHz
	Bluetooth	-	1 mW	Aruba AP-303 BLE
100	Simulated AP-109		Aruba AP-303	
	802.11n	11	10 mW	Aruba AP-303 2.4GHz
	802.11ac	60	25 mW	Aruba AP-303 5GHz
	Bluetooth	-	1 mW	Aruba AP-303 BLE
101	Simulated AP-110		Aruba AP-303	
	802.11n	6	10 mW	Aruba AP-303 2.4GHz
	802.11ac	132	25 mW	Aruba AP-303 5GHz
	Bluetooth	-	1 mW	Aruba AP-303 BLE
102	Simulated AP-111		Aruba AP-303	
	802.11n	1	10 mW	Aruba AP-303 2.4GHz
	802.11ac	52	25 mW	Aruba AP-303 5GHz
	Bluetooth	-	1 mW	Aruba AP-303 BLE
103	Simulated AP-112		Aruba AP-303	
	802.11n	11	10 mW	Aruba AP-303 2.4GHz
	802.11ac	140	25 mW	Aruba AP-303 5GHz
	Bluetooth	-	1 mW	Aruba AP-303 BLE
104	Simulated AP-113		Aruba AP-303	
	802.11n	11	10 mW	Aruba AP-303 2.4GHz
	802.11ac	124	25 mW	Aruba AP-303 5GHz
	Bluetooth	-	1 mW	Aruba AP-303 BLE

Wi-Fi Network Report

105	Simulated AP-114		Aruba AP-303	
	802.11n	1	10 mW	Aruba AP-303 2.4GHz
	802.11ac	44	25 mW	Aruba AP-303 5GHz
	Bluetooth	-	1 mW	Aruba AP-303 BLE
106	Simulated AP-115		Aruba AP-303	
	802.11n	6	10 mW	Aruba AP-303 2.4GHz
	802.11ac	120	25 mW	Aruba AP-303 5GHz
	Bluetooth	-	1 mW	Aruba AP-303 BLE
107	Simulated AP-116		Aruba AP-303	
	802.11n	11	10 mW	Aruba AP-303 2.4GHz
	802.11ac	48	25 mW	Aruba AP-303 5GHz
	Bluetooth	-	1 mW	Aruba AP-303 BLE
108	Simulated AP-117		Aruba AP-303	
	802.11n	6	10 mW	Aruba AP-303 2.4GHz
	802.11ac	136	25 mW	Aruba AP-303 5GHz
	Bluetooth	-	1 mW	Aruba AP-303 BLE
109	Simulated AP-118		Aruba AP-303	
	802.11n	1	10 mW	Aruba AP-303 2.4GHz
	802.11ac	40	25 mW	Aruba AP-303 5GHz
	Bluetooth	-	1 mW	Aruba AP-303 BLE
110	Simulated AP-119		Aruba AP-303	
	802.11n	11	10 mW	Aruba AP-303 2.4GHz
	802.11ac	104	25 mW	Aruba AP-303 5GHz
	Bluetooth	-	1 mW	Aruba AP-303 BLE
111	Simulated AP-92		Aruba AP-303	
	802.11n	11	10 mW	Aruba AP-303 2.4GHz
	802.11ac	52	25 mW	Aruba AP-303 5GHz
	Bluetooth	-	1 mW	Aruba AP-303 BLE
112	Simulated AP-93		Aruba AP-303	
	802.11n	6	10 mW	Aruba AP-303 2.4GHz

Wi-Fi Network Report

	802.11ac	116	25 mW	Aruba AP-303 5GHz
	Bluetooth	-	1 mW	Aruba AP-303 BLE
113	Simulated AP-94		Aruba AP-303	
	802.11n	11	10 mW	Aruba AP-303 2.4GHz
	802.11ac	48	25 mW	Aruba AP-303 5GHz
	Bluetooth	-	1 mW	Aruba AP-303 BLE
114	Simulated AP-95		Aruba AP-303	
	802.11n	6	10 mW	Aruba AP-303 2.4GHz
	802.11ac	60	25 mW	Aruba AP-303 5GHz
	Bluetooth	-	1 mW	Aruba AP-303 BLE
115	Simulated AP-96		Aruba AP-303	
	802.11n	1	10 mW	Aruba AP-303 2.4GHz
	802.11ac	136	25 mW	Aruba AP-303 5GHz
	Bluetooth	-	1 mW	Aruba AP-303 BLE
116	Simulated AP-97		Aruba AP-303	
	802.11n	11	10 mW	Aruba AP-303 2.4GHz
	802.11ac	108	25 mW	Aruba AP-303 5GHz
	Bluetooth	-	1 mW	Aruba AP-303 BLE
117	Simulated AP-98		Aruba AP-303	
	802.11n	6	10 mW	Aruba AP-303 2.4GHz
	802.11ac	128	25 mW	Aruba AP-303 5GHz
	Bluetooth	-	1 mW	Aruba AP-303 BLE
118	Simulated AP-99		Aruba AP-303	
	802.11n	1	10 mW	Aruba AP-303 2.4GHz
	802.11ac	36	25 mW	Aruba AP-303 5GHz
	Bluetooth	-	1 mW	Aruba AP-303 BLE