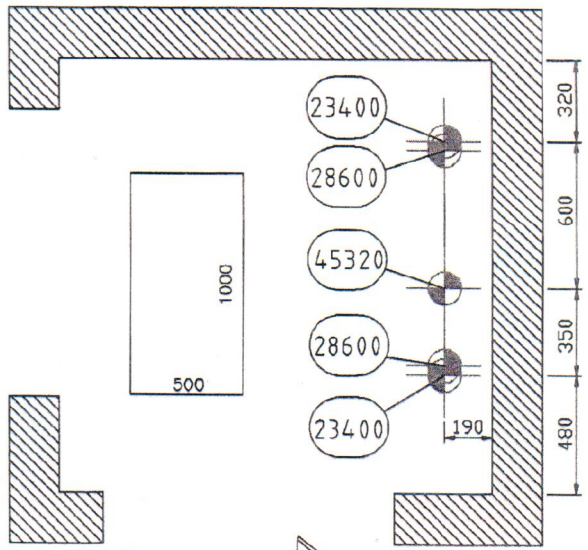
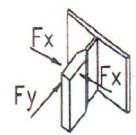


NACISK NA PODSZYBIE (N)



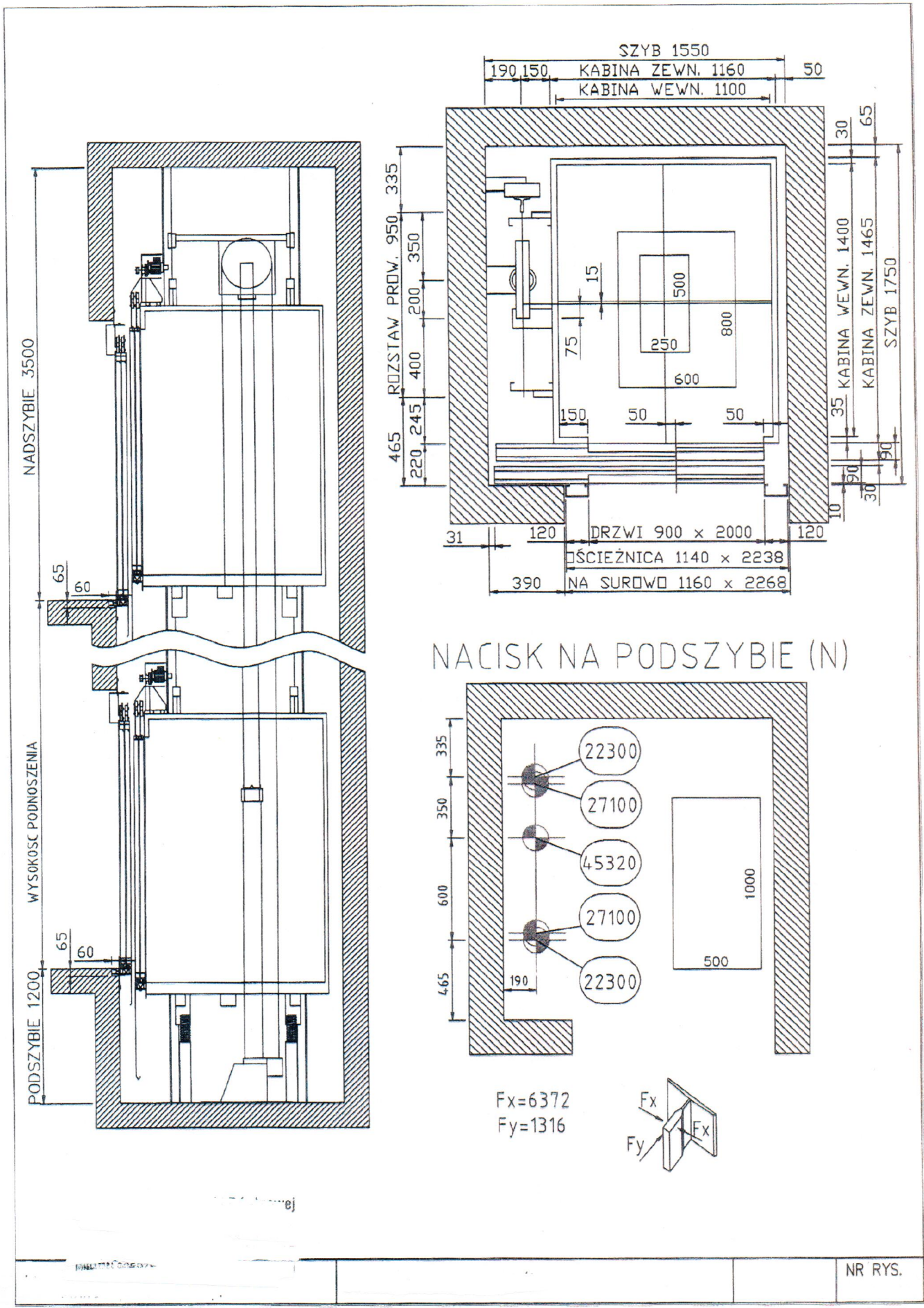
$F_x = 7010$   
 $F_y = 2356$



NR RYS.

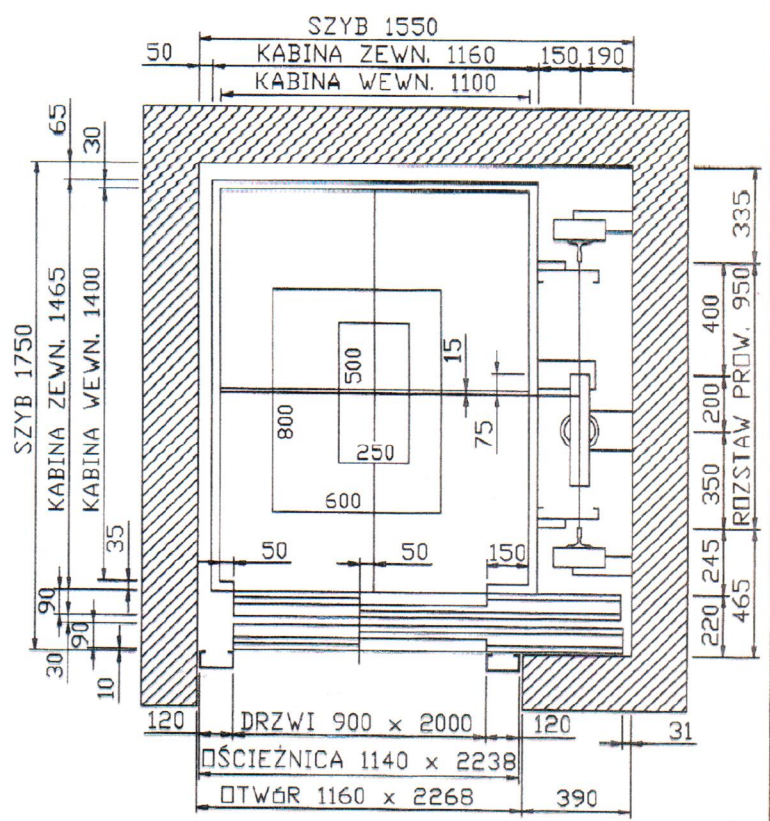
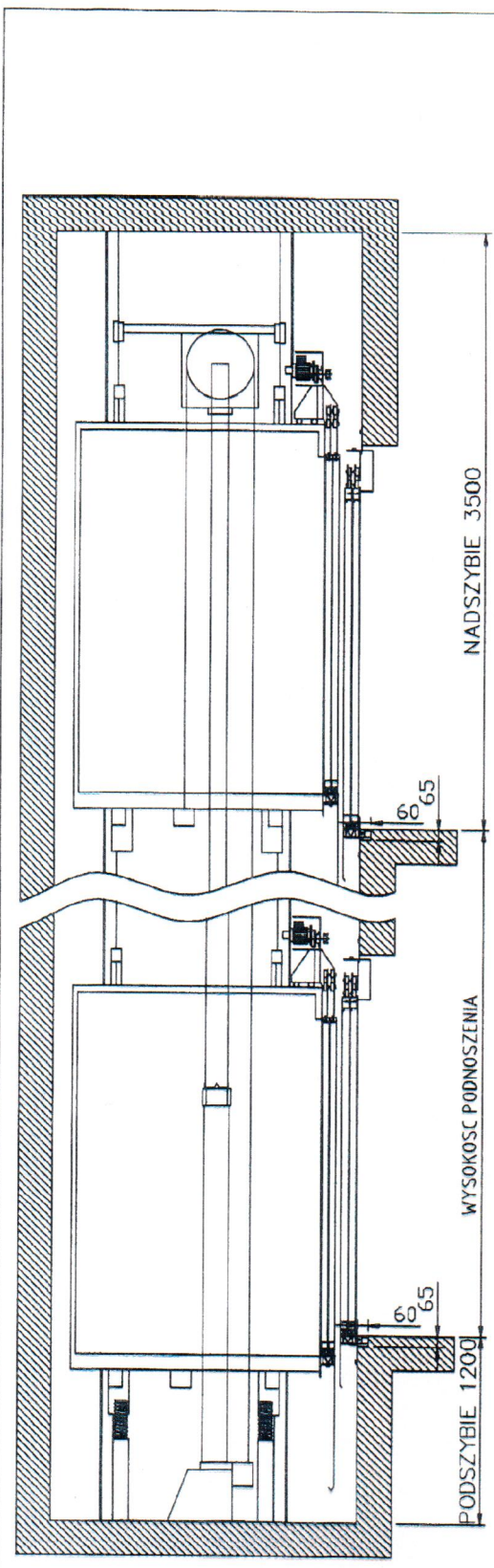
PRZYKŁADOWY TYP DŹWIGU - rys. nr 1



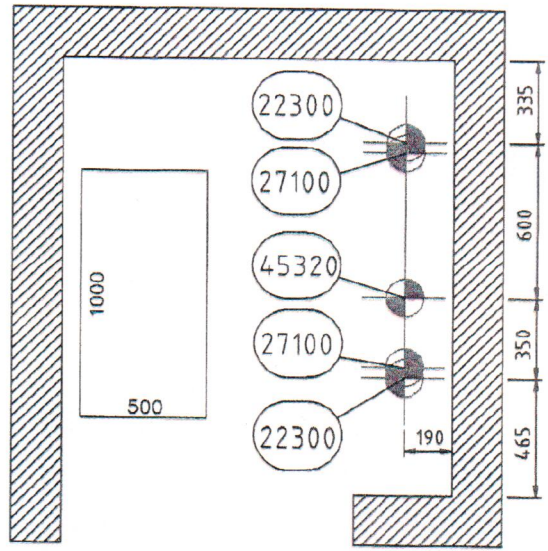


PRZYKŁADOWY TYP DŹWIGU - rys. nr 2





NACISK NA PODSZYBIE (N)

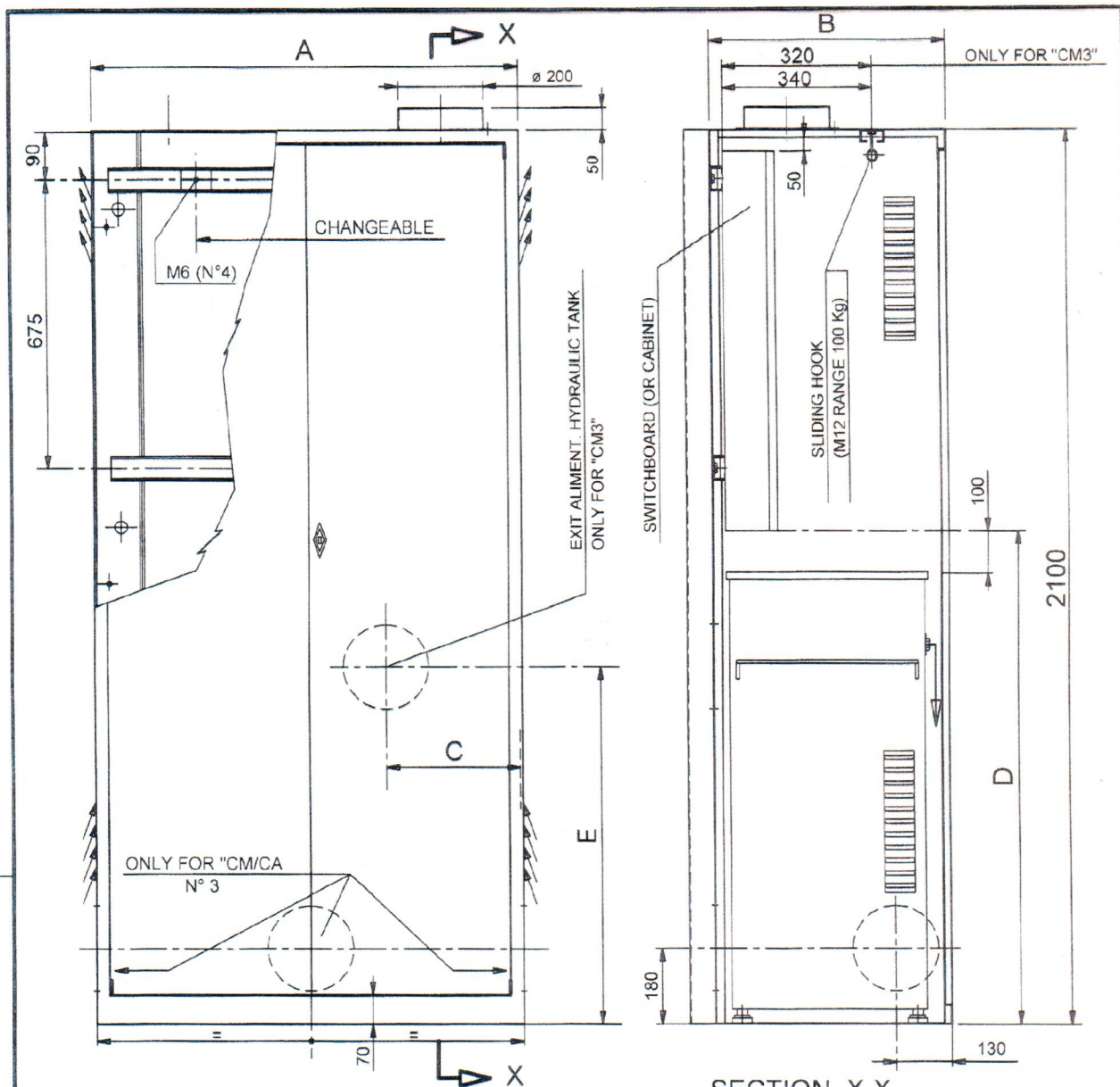


$F_x = 6372$   
 $F_y = 1316$

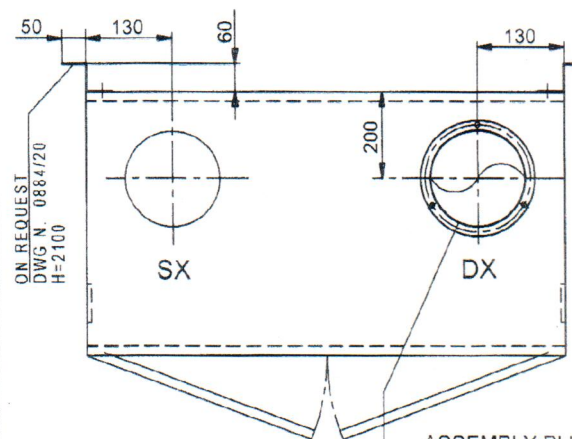


PRZYKŁADOWY TYP DZWIĞU - rys. m 3

DATA	
2	



SECTION X-X



TANK PATTERN	A	B	C	D	E	WASS Kg	FIGURE N°	SUPPLY CONDITIONS
CM3	950	400	278	1200	1140	95	0884/CM3-...	V
CM	1030	620	/	1140	/	105	0884/CM-...	MO
CA	1090	740	/	1240	/	115	0884/CA-...	2A

ES. SUPPLY P/N:  
0884/CM V MO 2A

ASSEMBLY PLUG DX o SX  
FUMES EXHAUST (TO INSTALLATION)  
(OPTIONAL)

SUPPLY P/N KEY

0884/ ... V MO 2A

CM3  
CM  
CA

2A = DOUBLE DOOR  
MO = ASSEMBLED  
V = PAINTED "RAL 7035"

UT	CABINET ASSEMBLY (DOUBLE DOORS) FOR TANKS: CM3-CM-CA <i>Szafa maszynowa</i>	DATE	12/03
		DWG N.	9680/2A

9680/2A-IN

PRZYKŁADOWY TYP DŹWIGU - mys. nr 4