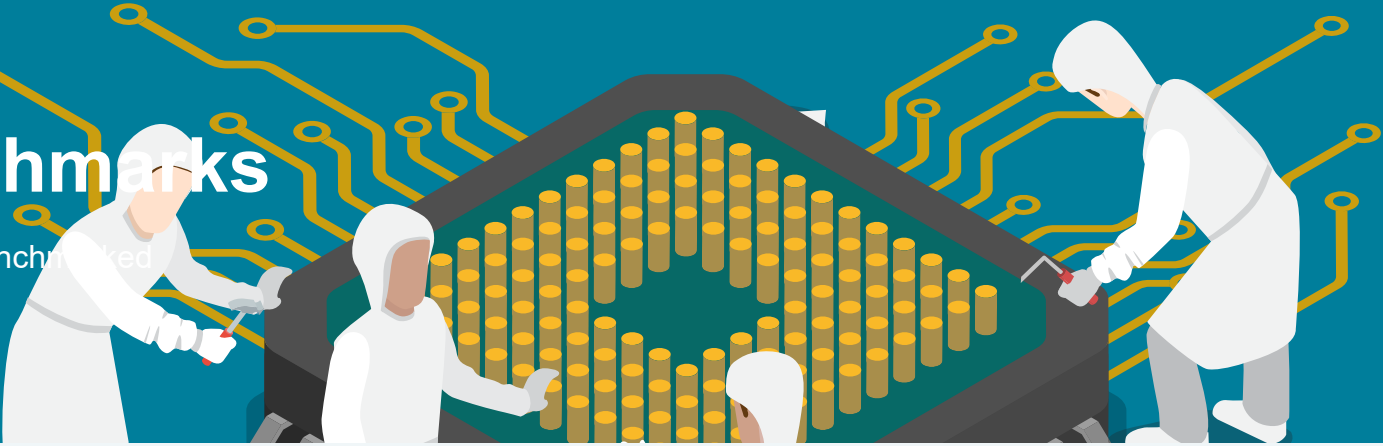


CPU Benchmarks

Over 1,000,000 CPUs Benchmarked



Low End CPUs

This chart comparing low end CPUs is made using thousands of [PerformanceTest](#) benchmark results and is updated daily. Low end CPUs are typically found on computers that are reasonably old or legacy systems.

CPUS

High End

High Mid Range

Low Mid Range

Low End

Best Value (On Market)

Best Value XY Scatter

Best Value (All time)

New Desktop

New Laptop

Single Thread

Systems with Multiple CPUs

Overclocked

Power Performance

CPU Mark by Socket Type

Cross-Platform CPU Performance

Top Gaming CPUs

CPU Mega List

Search Model

Compare

Common

CPU Mark

Price Performance

PassMark - CPU Mark

Low End CPUs

Updated 28th of July 2023

CPU	CPU Mark	Price (USD)
Intel Pentium 2127U @ 1.90GHz	1,030	\$134.00*
MediaTek MT8168	1,029	NA
Intel Atom C3338 @ 1.50GHz	1,028	NA
Intel Celeron U1900 @ 1.99GHz	1,028	NA
Intel Pentium E6300 @ 2.80GHz	1,027	\$41.85*
Intel Xeon 3070 @ 2.66GHz	1,025	\$28.65*
MT8168B	1,024	NA
MediaTek MT6750	1,023	NA
Intel Pentium 2117U @ 1.80GHz	1,022	\$134.00*
ARM Cortex-A57 8 Core 1500 MHz	1,022	NA
Qualcomm MSM8937	1,020	NA
tn8	1,020	NA
Intel Core2 Duo P9500 @ 2.53GHz	1,019	\$998.99*
AMD Athlon II X2 240	1,017	\$24.95
Mediatek MT6761V/CAB	1,017	NA
Snapdragon 435	1,016	NA
Intel Core i3-330M @ 2.13GHz	1,016	\$149.95
AMD Turion II Ultra Dual-Core Mobile M640	1,016	NA
Intel Pentium J2850 @ 2.41GHz	1,016	NA
Intel Pentium E5500 @ 2.80GHz	1,015	\$15.99*
Intel Celeron B840 @ 1.90GHz	1,015	NA
AMD Athlon X2 240e	1,015	NA
Intel Core i5-560UM @ 1.33GHz	1,015	NA
AMD Phenom II N620 Dual-Core	1,014	\$3.99*
AMD Turion II Ultra Dual-Core Mobile M660	1,011	NA
Intel Core2 Duo E7400 @ 2.80GHz	1,011	\$48.99*
AMD Phenom X2 Dual-Core GE-7060	1,010	NA
AMD A6-7000	1,010	NA

<div>AMD vs Intel Market Share</div> <div>Year on Year Performance</div>	Most Benchmarked	<div><div><div></div></div><div><div></div></div></div> <div>Intel Core i7-620UM @ 1.07GHz</div> <div><div></div></div> <div>1,010</div> <div>NA</div>
		<div><div><div></div></div><div><div></div></div></div> <div>AMD A6 PRO-7050B APU</div> <div><div></div></div> <div>1,009</div> <div>NA</div>
		<div><div><div></div></div><div><div></div></div></div> <div>AMD A6-4400M APU</div> <div><div></div></div> <div>1,008</div> <div>\$27.00*</div>
		<div><div><div></div></div><div><div></div></div></div> <div>Intel Atom x5-E8000 @ 1.04GHz</div> <div><div></div></div> <div>1,008</div> <div>NA</div>
		<div><div><div></div></div><div><div></div></div></div> <div>ARM Cortex-A57 4 Core 1912 MHz</div> <div><div></div></div> <div>1,007</div> <div>NA</div>
		<div><div><div></div></div><div><div></div></div></div> <div>AMD Phenom II P920 Quad-Core</div> <div><div></div></div> <div>1,006</div> <div>\$65.00*</div>
		<div><div><div></div></div><div><div></div></div></div> <div>Intel Pentium B950 @ 2.10GHz</div> <div><div></div></div> <div>1,005</div> <div>NA</div>
		<div><div><div></div></div><div><div></div></div></div> <div>AMD A4 Micro-6400T APU</div> <div><div></div></div> <div>1,004</div> <div>NA</div>
		<div><div><div></div></div><div><div></div></div></div> <div>Intel Core2 Duo E6750 @ 2.66GHz</div> <div><div></div></div> <div>1,004</div> <div>\$10.30*</div>
		<div><div><div></div></div><div><div></div></div></div> <div>Intel Core i3-3229Y @ 1.40GHz</div> <div><div></div></div> <div>1,004</div> <div>NA</div>
		<div><div><div></div></div><div><div></div></div></div> <div>Rockchip RK3566 EVB3 DDR3 V10 Board</div> <div><div></div></div> <div>1,003</div> <div>NA</div>
		<div><div><div></div></div><div><div></div></div></div> <div>AMD Athlon II X2 240e</div> <div><div></div></div> <div>1,002</div> <div>\$37.89*</div>
		<div><div><div></div></div><div><div></div></div></div> <div>Intel Core i5-540UM @ 1.20GHz</div> <div><div></div></div> <div>1,002</div> <div>NA</div>
		<div><div><div></div></div><div><div></div></div></div> <div>AMD A6-9220e</div> <div><div></div></div> <div>1,000</div> <div>NA</div>
		<div><div><div></div></div><div><div></div></div></div> <div>Intel Celeron N2930 @ 1.83GHz</div> <div><div></div></div> <div>1,000</div> <div>NA</div>
		<div><div><div></div></div><div><div></div></div></div> <div>AMD A4-4300M APU</div> <div><div></div></div> <div>1,000</div> <div>\$29.86*</div>
		<div><div><div></div></div><div><div></div></div></div> <div>AMD Athlon 64 X2 Dual Core 6400+</div> <div><div></div></div> <div>998</div> <div>\$249.95*</div>
		<div><div><div></div></div><div><div></div></div></div> <div>AMD Athlon X2 215</div> <div><div></div></div> <div>996</div> <div>NA</div>
		<div><div><div></div></div><div><div></div></div></div> <div>Intel Celeron 2981U @ 1.60GHz</div> <div><div></div></div> <div>991</div> <div>NA</div>
		<div><div><div></div></div><div><div></div></div></div> <div>AMD E2-9010</div> <div><div></div></div> <div>991</div> <div>NA</div>
		<div><div><div></div></div><div><div></div></div></div> <div>AMD Athlon II X2 4300e</div> <div><div></div></div> <div>990</div> <div>NA</div>
		<div><div><div></div></div><div><div></div></div></div> <div>Intel Core2 Duo E6700 @ 2.66GHz</div> <div><div></div></div> <div>990</div> <div>\$29.99*</div>
		<div><div><div></div></div><div><div></div></div></div> <div>Samsung Exynos 7870</div> <div><div></div></div> <div>989</div> <div>NA</div>
		<div><div><div></div></div><div><div></div></div></div> <div>Intel Pentium Extreme Edition 965 @ 3.73GHz</div> <div><div></div></div> <div>987</div> <div>NA</div>
		<div><div><div></div></div><div><div></div></div></div> <div>Rockchip RK3566 RK817 TABLET LP4X Board</div> <div><div></div></div> <div>987</div> <div>NA</div>
		<div><div><div></div></div><div><div></div></div></div> <div>Intel Core2 Duo T9400 @ 2.53GHz</div> <div><div></div></div> <div>987</div> <div>\$34.95*</div>
		<div><div><div></div></div><div><div></div></div></div> <div>MediaTek MT6753</div> <div><div></div></div> <div>984</div> <div>NA</div>
		<div><div><div></div></div><div><div></div></div></div> <div>ARM ARMv7 rev 3 (v7l) 4 Core 2065 MHz</div> <div><div></div></div> <div>984</div> <div>NA</div>
		<div><div><div></div></div><div><div></div></div></div> <div>Intel Core2 Duo E8300 @ 2.83GHz</div> <div><div></div></div> <div>983</div> <div>\$19.99*</div>
		<div><div><div></div></div><div><div></div></div></div> <div>AMD E2-9030</div> <div><div></div></div> <div>983</div> <div>NA</div>
		<div><div><div></div></div><div><div></div></div></div> <div>Intel Xeon 3060 @ 2.40GHz</div> <div><div></div></div> <div>983</div> <div>\$22.99*</div>
		<div><div><div></div></div><div><div></div></div></div> <div>AMD Opteron 1218 HE</div> <div><div></div></div> <div>979</div> <div>NA</div>
		<div><div><div></div></div><div><div></div></div></div> <div>AMD Athlon II X2 4400e</div> <div><div></div></div> <div>978</div> <div>NA</div>
		<div><div><div></div></div><div><div></div></div></div> <div>Intel Core i3-2340UE @ 1.30GHz</div> <div><div></div></div> <div>976</div> <div>NA</div>
		<div><div><div></div></div><div><div></div></div></div> <div>Intel Core2 Duo T7800 @ 2.60GHz</div> <div><div></div></div> <div>976</div> <div>\$607.99*</div>
		<div><div><div></div></div><div><div></div></div></div> <div>Qualcomm Technologies, Inc SDM429</div> <div><div></div></div> <div>975</div> <div>NA</div>
		<div><div><div></div></div><div><div></div></div></div> <div>Intel Core2 Duo E7200 @ 2.53GHz</div> <div><div></div></div> <div>975</div> <div>\$47.00*</div>
		<div><div><div></div></div><div><div></div></div></div> <div>Intel Core2 Duo E8135 @ 2.40GHz</div> <div><div></div></div> <div>973</div> <div>NA</div>
		<div><div><div></div></div><div><div></div></div></div> <div>Intel Core2 Duo P8700 @ 2.53GHz</div> <div><div></div></div> <div>973</div> <div>\$84.95*</div>
		<div><div><div></div></div><div><div></div></div></div> <div>MT6750V/WS</div> <div><div></div></div> <div>972</div> <div>NA</div>
		<div><div><div></div></div><div><div></div></div></div> <div>AMD Athlon 64 FX-74</div> <div><div></div></div> <div>972</div> <div>\$499.50*</div>
		<div><div><div></div></div><div><div></div></div></div> <div>Intel Core2 Duo T9300 @ 2.50GHz</div> <div><div></div></div> <div>971</div> <div>\$94.95*</div>
		<div><div><div></div></div><div><div></div></div></div> <div>ARM Cortex-A72 4 Core 2300 MHz</div> <div><div></div></div> <div>968</div> <div>NA</div>
		<div><div><div></div></div><div><div></div></div></div> <div>MT6795M</div> <div><div></div></div> <div>968</div> <div>NA</div>
		<div><div><div></div></div><div><div></div></div></div> <div>AMD Athlon 7750 Dual-Core</div> <div><div></div></div> <div>968</div> <div>\$79.99</div>
		<div><div><div></div></div><div><div></div></div></div> <div>AMD A4-3300 APU</div> <div><div></div></div> <div>967</div> <div>\$56.61</div>
		<div><div><div></div></div><div><div></div></div></div> <div>AMD Phenom II N640 Dual-Core</div> <div><div></div></div> <div>965</div> <div>\$54.95*</div>
		<div><div><div></div></div><div><div></div></div></div> <div>Intel Core2 Duo E7300 @ 2.66GHz</div> <div><div></div></div> <div>965</div> <div>\$49.96</div>
		<div><div><div></div></div><div><div></div></div></div> <div>Intel Xeon 5160 @ 3.00GHz</div> <div><div></div></div> <div>963</div> <div>\$43.50*</div>
		<div><div><div></div></div><div><div></div></div></div> <div>AMD Athlon II X2 215</div> <div><div></div></div> <div>962</div> <div>\$28.97*</div>
		<div><div><div></div></div><div><div></div></div></div> <div>Intel Atom C2538 @ 2.40GHz</div> <div><div></div></div> <div>960</div> <div>\$104.00*</div>

AMD Turion II P540 Dual-Core	<div></div>	960	\$49.95*
Qualcomm Technologies, Inc MSM8939	<div></div>	959	NA
Rockchip RK3566	<div></div>	957	NA
Intel Pentium E5400 @ 2.70GHz	<div></div>	957	\$84.75
Intel Pentium B960 @ 2.20GHz	<div></div>	956	\$38.68*
AMD Opteron 285	<div></div>	956	\$24.95*
MT6750V/CS	<div></div>	955	NA
AMD Turion II Ultra Dual-Core Mobile M600	<div></div>	955	\$16.76*
ARM Cortex-A57 4 Core 1479 MHz	<div></div>	955	NA
AMD R-260H APU	<div></div>	954	NA
AMD E2-3200 APU	<div></div>	953	\$7.99*
AMD Opteron 290	<div></div>	952	\$135.00*
AMD E2-9000	<div></div>	952	NA
Intel Core2 Duo P9300 @ 2.26GHz	<div></div>	952	NA
Intel Celeron 1037U @ 1.80GHz	<div></div>	950	NA
Intel Core2 Duo T9550 @ 2.66GHz	<div></div>	948	\$298.95*
Intel Core2 Duo P8800 @ 2.66GHz	<div></div>	947	\$56.99*
MediaTek MT8166B	<div></div>	943	NA
Intel Celeron 3205U @ 1.50GHz	<div></div>	943	\$287.04*
Intel Celeron N2920 @ 1.86GHz	<div></div>	943	NA
AMD Athlon 64 FX-62 Dual Core	<div></div>	943	\$250.00
Intel Celeron J1850 @ 1.99GHz	<div></div>	942	NA
Intel Core2 Duo T7700 @ 2.40GHz	<div></div>	941	\$129.95
AMD Athlon 64 X2 Dual Core 6000+	<div></div>	940	\$38.50*
Rockchip RK3566 EVB2 LP4X V10 Board	<div></div>	938	NA
AMD Athlon X2 255	<div></div>	938	NA
MT8165	<div></div>	937	NA
Intel Celeron E3500 @ 2.70GHz	<div></div>	935	\$15.00
MT8766A	<div></div>	935	NA
Intel Core2 Duo E6600 @ 2.40GHz	<div></div>	934	\$188.08
AMD Phenom II P650 Dual-Core	<div></div>	933	\$35.00*
Qualcomm Technologies, Inc MSM8994	<div></div>	932	NA
Pentium Dual-Core T4500 @ 2.30GHz	<div></div>	932	NA
Samsung J7 Max LTE SWA board based on MT6757V/WL	<div></div>	930	NA
AMD Sempron X2 198 Dual-Core	<div></div>	930	NA
Intel Atom x5-E3930 @ 1.30GHz	<div></div>	928	NA
Intel Xeon L3406 @ 2.27GHz	<div></div>	928	\$257.88
Intel Xeon 5150 @ 2.66GHz	<div></div>	924	\$30.99*
ARM Cortex-A15 4 Core 2000 MHz	<div></div>	923	NA
AMD Athlon X2 240	<div></div>	921	NA
AMD Athlon 64 X2 Dual Core 5600+	<div></div>	921	\$107.21*
Intel Pentium E5300 @ 2.60GHz	<div></div>	918	\$59.49
Intel Xeon 5148 @ 2.33GHz	<div></div>	912	\$20.00*
AMD Turion II Dual-Core Mobile M540	<div></div>	912	NA
AMD Opteron 1218	<div></div>	910	NA
MT6761V/CBB	<div></div>	910	NA
AMD Opteron 2220 SE	<div></div>	909	\$25.00*
Intel Core i5-520UM @ 1.07GHz	<div></div>	908	NA
AMD Athlon 64 X2 Dual Core 5400+	<div></div>	907	\$52.99*
Qualcomm Technologies, Inc MSM8952	<div></div>	905	NA

⌵ ⌵ VIA Eden X4 C4250 @ 1.2+GHz	<div></div>	904	NA
⌵ ⌵ Intel Xeon 3.73GHz	<div></div>	901	NA
⌵ ⌵ AMD Athlon 7550 Dual-Core	<div></div>	900	\$14.95*
⌵ ⌵ Intel Core i3-2375M @ 1.50GHz	<div></div>	899	NA
⌵ ⌵ AMD Athlon II N370 Dual-Core	<div></div>	899	NA
⌵ ⌵ Intel Atom x5-Z8350 @ 1.44GHz	<div></div>	897	\$21.00*
⌵ ⌵ Intel Pentium G620T @ 2.20GHz	<div></div>	896	\$19.99*
⌵ ⌵ Rockchip RK3568 EVB2 LP4X V10 Board	<div></div>	895	NA
⌵ ⌵ Intel Celeron 1017U @ 1.60GHz	<div></div>	895	NA
⌵ ⌵ Intel Celeron 2955U @ 1.40GHz	<div></div>	895	NA
⌵ ⌵ UGOOS UT8 Board	<div></div>	894	NA
⌵ ⌵ AMD RX-225FB	<div></div>	892	NA
⌵ ⌵ AMD E2-9000e	<div></div>	890	NA
⌵ ⌵ MT8365	<div></div>	889	NA
⌵ ⌵ AMD Turion II P560 Dual-Core	<div></div>	889	NA
⌵ ⌵ Intel Pentium P6200 @ 2.13GHz	<div></div>	889	\$24.95*
⌵ ⌵ Unisoc ums312	<div></div>	887	NA
⌵ ⌵ Intel Xeon 5133 @ 2.20GHz	<div></div>	887	NA
⌵ ⌵ Intel Core2 Duo E6550 @ 2.33GHz	<div></div>	886	\$13.30*
⌵ ⌵ AMD Phenom X2 Dual-Core GP-7730	<div></div>	884	NA
⌵ ⌵ ARM FT-2000/4 4 Core 2200 MHz	<div></div>	881	NA
⌵ ⌵ Intel Core2 Duo T8300 @ 2.40GHz	<div></div>	879	\$108.95*
⌵ ⌵ AMD Sempron X2 190	<div></div>	879	\$83.44*
⌵ ⌵ Intel Pentium N3510 @ 1.99GHz	<div></div>	878	NA
⌵ ⌵ Samsung Exynos 7580	<div></div>	878	NA
⌵ ⌵ AMD Turion II N550 Dual-Core	<div></div>	877	NA
⌵ ⌵ Athlon 64 Dual Core 5600+	<div></div>	875	NA
⌵ ⌵ AMD Athlon 5000 Dual-Core	<div></div>	872	\$109.95
⌵ ⌵ Intel Pentium P6100 @ 2.00GHz	<div></div>	872	\$18.44*
⌵ ⌵ Intel Pentium E5200 @ 2.50GHz	<div></div>	871	\$49.94
⌵ ⌵ rockchip,rk3368	<div></div>	870	NA
⌵ ⌵ Intel Celeron P4600 @ 2.00GHz	<div></div>	870	NA
⌵ ⌵ AMD Athlon 5200 Dual-Core	<div></div>	869	\$189.95
⌵ ⌵ Intel Xeon 3065 @ 2.33GHz	<div></div>	867	\$20.90*
⌵ ⌵ Intel Core2 Duo P7550 @ 2.26GHz	<div></div>	867	\$229.99*
⌵ ⌵ AMD Athlon II X2 4450e	<div></div>	867	NA
⌵ ⌵ Intel Core2 Duo SP9400 @ 2.40GHz	<div></div>	866	\$284.00*
⌵ ⌵ AMD Turion 64 X2 Mobile TL-68	<div></div>	866	\$90.00*
⌵ ⌵ SAMSUNG Exynos7580	<div></div>	863	NA
⌵ ⌵ Intel Core2 Duo E4700 @ 2.60GHz	<div></div>	862	\$26.99*
⌵ ⌵ Synaptics VS640	<div></div>	862	NA
⌵ ⌵ Intel Core2 Duo P8600 @ 2.40GHz	<div></div>	857	\$49.18*
⌵ ⌵ MT8161AA	<div></div>	857	NA
⌵ ⌵ Intel Xeon 5140 @ 2.33GHz	<div></div>	857	\$36.99*
⌵ ⌵ AMD Athlon Dual Core 5000B	<div></div>	856	\$95.00*
⌵ ⌵ Intel Pentium B940 @ 2.00GHz	<div></div>	856	\$68.32*
⌵ ⌵ Intel Celeron 2957U @ 1.40GHz	<div></div>	856	NA
⌵ ⌵ AMD Turion II N530 Dual-Core	<div></div>	855	\$30.00*
⌵ ⌵ AMD Athlon X2 250	<div></div>	855	NA
⌵ ⌵ Intel Core2 Duo E4600 @ 2.40GHz	<div></div>	854	\$157.95*
⌵ ⌵ BCM2711	<div></div>	852	NA
⌵ ⌵ Athlon 64 Dual Core 5000+	<div></div>	850	NA

Intel Pentium 3560Y @ 1.20GHz	<div></div>	849	NA
MT9950	<div></div>	845	NA
MT6750V/W	<div></div>	845	NA
AMD Turion II Neo N54L Dual-Core	<div></div>	844	NA
Intel Celeron E3400 @ 2.60GHz	<div></div>	844	\$19.99
Intel Celeron E3300 @ 2.50GHz	<div></div>	844	\$64.78
AMD Turion II Dual-Core Mobile M520	<div></div>	843	\$69.10*
AMD Athlon 64 X2 Dual Core 5200+	<div></div>	843	\$60.00*
MTK8257	<div></div>	842	NA
AMD TurionX2 Ultra DualCore Mobile ZM-85	<div></div>	841	NA
Intel Xeon 3050 @ 2.13GHz	<div></div>	841	\$157.95*
Intel Celeron E1600 @ 2.40GHz	<div></div>	840	NA
AMD Opteron 275	<div></div>	839	\$149.95
Intel Celeron E3200 @ 2.40GHz	<div></div>	839	\$19.99*
Thor	<div></div>	839	NA
Intel Core2 Duo P8400 @ 2.26GHz	<div></div>	838	\$297.01*
Intel Xeon E5205 @ 1.86GHz	<div></div>	838	\$14.27*
Intel Xeon E5502 @ 1.87GHz	<div></div>	837	\$39.00
MT8168M	<div></div>	837	NA
AMD A4-9120e	<div></div>	835	NA
Intel Core i3-2377M @ 1.50GHz	<div></div>	834	NA
Intel Pentium P6300 @ 2.27GHz	<div></div>	834	NA
Intel Core2 Duo T7500 @ 2.20GHz	<div></div>	833	\$59.00*
Intel Core i3-2367M @ 1.40GHz	<div></div>	832	NA
Intel Celeron 1007U @ 1.50GHz	<div></div>	830	\$184.99*
Rockchip RK3368	<div></div>	827	NA
AMD Athlon Dual Core 5400B	<div></div>	826	NA
AMD Sempron X2 180	<div></div>	826	\$69.40*
AMD A4-9120C	<div></div>	825	NA
Intel Celeron B830 @ 1.80GHz	<div></div>	824	\$49.99*
AMD Athlon Dual Core 5200B	<div></div>	823	NA
Intel Core2 Extreme X6800 @ 2.93GHz	<div></div>	823	\$263.64*
Intel Core i3-2365M @ 1.40GHz	<div></div>	821	NA
DO-Regular	<div></div>	819	NA
MT8766B	<div></div>	818	NA
Intel Pentium T4500 @ 2.30GHz	<div></div>	818	\$29.95*
Qualcomm Technologies, Inc MSM8992	<div></div>	817	NA
Intel Celeron P4500 @ 1.87GHz	<div></div>	816	NA
MT6761V/CAB	<div></div>	815	NA
AMD Turion II Ultra Dual-Core Mobile M620	<div></div>	814	NA
Intel Atom x5-Z8330 @ 1.44GHz	<div></div>	814	NA
AMD Turion II P520 Dual-Core	<div></div>	814	NA
ARM Cortex-A72 4 Core 2200 MHz	<div></div>	811	NA
AMD Athlon Dual Core 5050e	<div></div>	809	\$60.00*
Intel Core2 Duo E6540 @ 2.33GHz	<div></div>	808	NA
AMD Athlon II Dual-Core M340	<div></div>	807	NA
Intel Celeron B820 @ 1.70GHz	<div></div>	807	\$29.29*
AMD A4-4355M APU	<div></div>	806	NA
AMD Opteron 1214 HE	<div></div>	806	NA
ARM Cortex-A72 4 Core 1900 MHz	<div></div>	805	NA
Qualcomm MSM8994	<div></div>	805	NA

Intel Xeon E5503 @ 2.00GHz	<div></div>	804	\$128.00*
Intel Pentium E2220 @ 2.40GHz	<div></div>	804	\$22.00
Intel Core2 Duo P7570 @ 2.26GHz	<div></div>	804	NA
nxp IMX8MQ	<div></div>	803	NA
AMD Athlon64 X2 Dual Core 4600+	<div></div>	803	NA
Intel Atom Z3580 @ 1.33GHz	<div></div>	802	NA
Intel Atom x5-Z8300 @ 1.44GHz	<div></div>	801	\$132.99*
Intel Core2 Duo T7600 @ 2.33GHz	<div></div>	801	\$99.95*
MT8161A	<div></div>	800	NA
AMD Turion X2 Ultra Dual-Core Mobile ZM-85	<div></div>	799	\$45.00*
AMD Athlon 64 X2 Dual Core 5800+	<div></div>	797	\$29.95*
hi6210sft	<div></div>	796	NA
Rockchip RK3566 RK817 ZIDOO TABLET LP4X Board	<div></div>	795	NA
Intel Xeon 5130 @ 2.00GHz	<div></div>	795	\$48.99*
Intel Atom Z3775D @ 1.49GHz	<div></div>	794	NA
AMD Turion X2 Ultra Dual-Core Mobile ZM-84	<div></div>	793	\$49.95*
Intel Core2 Duo P7450 @ 2.13GHz	<div></div>	791	\$39.99*
Intel Xeon 3040 @ 1.86GHz	<div></div>	790	\$25.04*
Intel Core2 Duo P7370 @ 2.00GHz	<div></div>	790	NA
Intel Pentium 997 @ 1.60GHz	<div></div>	789	NA
AMD Athlon 7450 Dual-Core	<div></div>	789	NA
Intel Core i3-2357M @ 1.30GHz	<div></div>	788	NA
Intel Core2 Duo L9600 @ 2.13GHz	<div></div>	788	NA
Intel Pentium P6000 @ 1.87GHz	<div></div>	787	NA
Intel Core2 Duo T6670 @ 2.20GHz	<div></div>	787	NA
AMD A6-4455M APU	<div></div>	785	NA
MT6761V/CD	<div></div>	784	NA
AMD Athlon Dual Core 4850e	<div></div>	783	\$39.00*
AMD A4-3310MX APU	<div></div>	782	NA
AMD GX-217GA SOC	<div></div>	782	NA
AMD Athlon 64 X2 Dual Core 5000+	<div></div>	781	\$331.49*
AMD Opteron 1216	<div></div>	781	\$54.85*
Intel Core i5-470UM @ 1.33GHz	<div></div>	778	NA
Intel Core2 Duo T6600 @ 2.20GHz	<div></div>	775	\$39.97*
Pentium Dual-Core T4200 @ 2.00GHz	<div></div>	775	NA
M7221	<div></div>	775	NA
Intel Celeron B810 @ 1.60GHz	<div></div>	775	\$79.95*
VIA QuadCore L4700 @ 1.2+ GHz	<div></div>	773	NA
Intel Celeron N2910 @ 1.60GHz	<div></div>	773	NA
Intel Atom Z3735G @ 1.33GHz	<div></div>	772	NA
AMD Opteron 1212 HE	<div></div>	771	NA
Intel Core2 Duo P7350 @ 2.00GHz	<div></div>	770	\$19.99*
Intel Pentium T4300 @ 2.10GHz	<div></div>	770	\$98.95*
MT6761V/WAB	<div></div>	769	NA
Athlon Dual Core 4850e	<div></div>	769	NA
AMD Athlon II N350 Dual-Core	<div></div>	767	NA
ARM Cortex-A72 4 Core 1800 MHz	<div></div>	767	NA
AMD Opteron 280	<div></div>	765	\$264.85
AMD A4-5150M APU	<div></div>	765	NA
Celeron Dual-Core T3500 @ 2.10GHz	<div></div>	764	NA
Intel Xeon 5120 @ 1.86GHz	<div></div>	763	\$393.00

⌵ ⌵	rockchip,rk3328	<div></div>	761	NA
⌵ ⌵	Intel Atom Z3735D @ 1.33GHz	<div></div>	761	NA
⌵ ⌵	Intel Core2 Duo SL9400 @ 1.86GHz	<div></div>	761	\$253.00*
⌵ ⌵	Intel Pentium T4400 @ 2.20GHz	<div></div>	759	\$109.95*
⌵ ⌵	Qualcomm Technologies, Inc SCUBAIIOT	<div></div>	759	NA
⌵ ⌵	MT6797D	<div></div>	758	NA
⌵ ⌵	AMD Turion 64 X2 Mobile TL-62	<div></div>	756	\$29.00*
⌵ ⌵	MT8173	<div></div>	755	NA
⌵ ⌵	Intel Celeron 887 @ 1.50GHz	<div></div>	754	NA
⌵ ⌵	AMD GX-218GL SOC	<div></div>	754	NA
⌵ ⌵	AMD A4-3330MX APU	<div></div>	752	NA
⌵ ⌵	Intel Core2 Duo T6570 @ 2.10GHz	<div></div>	751	\$38.50*
⌵ ⌵	Rockchip RK3566 EVB1 DDR4 V10 Board	<div></div>	751	NA
⌵ ⌵	Intel Atom Z3560 @ 1.00GHz	<div></div>	749	NA
⌵ ⌵	Intel Celeron 1047UE @ 1.40GHz	<div></div>	748	NA
⌵ ⌵	Spreadtrum SC9853I-IA	<div></div>	748	NA
⌵ ⌵	Dual-Core AMD Opteron 1220 SE	<div></div>	748	NA
⌵ ⌵	Intel Core2 Duo E6420 @ 2.13GHz	<div></div>	747	\$39.99*
⌵ ⌵	AMD Opteron 180	<div></div>	746	\$119.95
⌵ ⌵	Intel Core2 Duo T8100 @ 2.10GHz	<div></div>	746	\$999.99*
⌵ ⌵	Intel Pentium Dual T2390 @ 1.86GHz	<div></div>	745	NA
⌵ ⌵	Intel Pentium D 960 @ 3.60GHz	<div></div>	743	NA
⌵ ⌵	ARM Cortex-A55 4 Core 2124 MHz	<div></div>	742	NA
⌵ ⌵	Intel Atom Z3770 @ 1.46GHz	<div></div>	739	\$149.44*
⌵ ⌵	MT8696	<div></div>	738	NA
⌵ ⌵	AMD Athlon Dual Core 5600B	<div></div>	737	NA
⌵ ⌵	Intel Core2 Duo E4500 @ 2.20GHz	<div></div>	737	\$11.00*
⌵ ⌵	Intel Core2 Duo T6500 @ 2.10GHz	<div></div>	736	\$14.99*
⌵ ⌵	Intel Pentium D 3.40GHz	<div></div>	736	NA
⌵ ⌵	Athlon 64 Dual Core 3800+	<div></div>	736	NA
⌵ ⌵	AMD Opteron 270	<div></div>	736	\$270.75*
⌵ ⌵	Intel Core2 Duo E6400 @ 2.13GHz	<div></div>	735	\$29.94*
⌵ ⌵	AMD Turion II Dual-Core Mobile M500	<div></div>	735	NA
⌵ ⌵	Intel Core i3-380UM @ 1.33GHz	<div></div>	734	NA
⌵ ⌵	Intel Celeron 2961Y @ 1.10GHz	<div></div>	732	NA
⌵ ⌵	ARM Cortex-A17 4 Core 1800 MHz	<div></div>	732	NA
⌵ ⌵	MT8735A	<div></div>	731	NA
⌵ ⌵	Qualcomm Technologies, Inc APQ8096pro	<div></div>	730	NA
⌵ ⌵	AMD Athlon II P360 Dual-Core	<div></div>	727	\$19.95*
⌵ ⌵	AMD Athlon Dual Core 4850B	<div></div>	727	NA
⌵ ⌵	AMD Opteron 1216 HE	<div></div>	727	NA
⌵ ⌵	AMD Athlon II Dual-Core M320	<div></div>	726	\$30.00*
⌵ ⌵	AMD E2-3000 APU	<div></div>	726	NA
⌵ ⌵	MediaTek MT6761V/WBB	<div></div>	725	NA
⌵ ⌵	Intel Celeron B815 @ 1.60GHz	<div></div>	723	NA
⌵ ⌵	Intel Pentium T4200 @ 2.00GHz	<div></div>	723	\$98.95*
⌵ ⌵	MT3561S	<div></div>	723	NA
⌵ ⌵	Intel Core2 Duo T7200 @ 2.00GHz	<div></div>	722	\$45.50
⌵ ⌵	ARM Cortex-A72 4 Core 2000 MHz	<div></div>	720	NA
⌵ ⌵	MediaTek MT6761V/WE	<div></div>	719	NA
⌵ ⌵	AMD Athlon Dual Core 4450B	<div></div>	719	\$31.00*

AMD A4-3305M APU	<div></div>	718	\$20.81*
Intel Core2 Duo E6320 @ 1.86GHz	<div></div>	717	\$39.99*
Qualcomm Technologies, Inc SDA429W	<div></div>	715	NA
AMD Athlon II X2 260u	<div></div>	713	\$83.44*
Intel Pentium E2200 @ 2.20GHz	<div></div>	712	\$54.00
AC8257V/WAB	<div></div>	711	NA
AMD A4-3300M APU	<div></div>	711	\$29.99*
Intel Core2 Duo T6400 @ 2.00GHz	<div></div>	711	\$14.99*
AMD Athlon 64 X2 Dual Core 4600+	<div></div>	710	\$349.95*
ARM Cortex-A55 4 Core 1992 MHz	<div></div>	709	NA
Intel Celeron E1400 @ 2.00GHz	<div></div>	709	\$79.95
AMD Athlon 64 FX-60 Dual Core	<div></div>	709	NA
AMD Turion X2 Dual-Core Mobile RM-75	<div></div>	708	NA
Rockchip RK3288	<div></div>	708	NA
AMD Turion X2 Ultra Dual-Core Mobile ZM-82	<div></div>	707	NA
AMD Athlon Dual Core 4450e	<div></div>	705	\$14.48*
Qualcomm MSM8974	<div></div>	705	NA
MT8735T	<div></div>	704	NA
Intel Atom E3840 @ 1.91GHz	<div></div>	704	NA
Intel Atom Z3775 @ 1.46GHz	<div></div>	703	\$500.00*
Intel Core2 Duo T7400 @ 2.16GHz	<div></div>	703	\$149.95*
Intel Pentium E2210 @ 2.20GHz	<div></div>	702	NA
MT5893	<div></div>	702	NA
Intel Core2 Duo T7250 @ 2.00GHz	<div></div>	701	\$201.48*
AMD Athlon II P320 Dual-Core	<div></div>	700	\$19.95
AMD Opteron 1214	<div></div>	696	\$90.18
AMD Turion 64 X2 Mobile TL-66	<div></div>	696	\$89.00*
AMD Opteron 185	<div></div>	695	NA
AMD Turion X2 Ultra Dual-Core Mobile ZM-86	<div></div>	695	\$61.00*
ARM Cortex-A55 4 Core 2100 MHz	<div></div>	694	NA
MT6738	<div></div>	692	NA
AMD Turion X2 Dual Core Mobile RM-76	<div></div>	691	NA
AMD Athlon II P340 Dual-Core	<div></div>	691	\$39.95*
Intel Atom Z3560 @ 1.83GHz	<div></div>	690	NA
Intel Core2 Duo L9300 @ 1.60GHz	<div></div>	690	NA
Intel Celeron P4505 @ 1.87GHz	<div></div>	689	NA
AMD Turion X2 Ultra Dual-Core Mobile ZM-87	<div></div>	689	\$39.95*
Intel Core2 Duo T5850 @ 2.16GHz	<div></div>	687	\$27.79*
Celeron Dual-Core T3000 @ 1.80GHz	<div></div>	687	NA
Allwinner A133	<div></div>	686	NA
Rockchip RK3566 RK817 TABLET RKG11 LP4 Board	<div></div>	686	NA
Intel Core2 Duo T5870 @ 2.00GHz	<div></div>	684	NA
AMD Turion II Neo K685 Dual-Core	<div></div>	684	NA
AMD Athlon 64 X2 Dual Core 4200+	<div></div>	683	\$109.95*
AMD Opteron 175	<div></div>	682	NA
Intel Core2 Duo T5750 @ 2.00GHz	<div></div>	681	\$9.99*
Athlon Dual Core 4450e	<div></div>	681	NA
Intel Core2 Duo L7800 @ 2.00GHz	<div></div>	680	NA
AMD Athlon 64 X2 Dual Core 4800+	<div></div>	679	\$149.95*
Intel Celeron J3060 @ 1.60GHz	<div></div>	676	NA

⌵	Intel Pentium E2180 @ 2.00GHz	<div></div>	676	\$19.50*
⌵	AMD Athlon II X2 270u	<div></div>	675	\$67.67*
⌵	AMD Turion 64 X2 Mobile TL-64	<div></div>	675	\$39.39*
⌵	Intel Celeron 877 @ 1.40GHz	<div></div>	675	NA
⌵	AMD Athlon Dual Core 4050e	<div></div>	674	NA
⌵	Intel Celeron B800 @ 1.50GHz	<div></div>	674	\$24.99*
⌵	AMD Athlon X2 Dual Core BE-2400	<div></div>	674	NA
⌵	AMD E2-3000M APU	<div></div>	674	\$42.98*
⌵	Intel Core2 Duo T7300 @ 2.00GHz	<div></div>	672	\$89.95*
⌵	Qualcomm MSM8974PRO-AA	<div></div>	672	NA
⌵	Intel Pentium D 950 @ 3.40GHz	<div></div>	671	NA
⌵	Intel Core i5-430UM @ 1.20GHz	<div></div>	670	NA
⌵	Athlon Dual Core 4050e	<div></div>	670	NA
⌵	AMD Athlon II Dual-Core M300	<div></div>	670	NA
⌵	MediaTek MT8168A	<div></div>	670	NA
⌵	AMD E2-7015 APU	<div></div>	669	NA
⌵	AMD Athlon 64 X2 Dual Core 4000+	<div></div>	668	NA
⌵	AMD Turion X2 Dual-Core Mobile RM-72	<div></div>	666	\$224.26*
⌵	AMD Athlon 64 X2 Dual Core 4400+	<div></div>	666	\$298.95*
⌵	VIA QuadCore U4650 @ 1.0+ GHz	<div></div>	666	NA
⌵	AMD Athlon II N330 Dual-Core	<div></div>	665	NA
⌵	Qualcomm MSM8974PRO-AB	<div></div>	665	NA
⌵	Samsung EXYNOS5420	<div></div>	663	NA
⌵	AMD Turion Dual-Core RM-75	<div></div>	659	\$21.49*
⌵	AMD Turion X2 Dual-Core Mobile RM-74	<div></div>	655	\$14.95*
⌵	Intel Celeron N3060 @ 1.60GHz	<div></div>	655	\$282.00*
⌵	ARM Cortex-A72 4 Core 1500 MHz	<div></div>	654	NA
⌵	MediaTek MT6737T	<div></div>	653	NA
⌵	ARM Cortex-A72 4 Core 2100 MHz	<div></div>	652	NA
⌵	Intel Core2 Duo T5900 @ 2.20GHz	<div></div>	652	NA
⌵	Broadcom STB (Flattened Device Tree)	<div></div>	651	NA
⌵	Intel Pentium T3400 @ 2.16GHz	<div></div>	650	\$79.95*
⌵	Qualcomm MSM8917	<div></div>	650	NA
⌵	Intel Core2 Duo E4400 @ 2.00GHz	<div></div>	650	\$42.50*
⌵	Intel Core2 Duo T5600 @ 1.83GHz	<div></div>	650	NA
⌵	AMD Turion Dual-Core RM-72	<div></div>	649	\$29.90*
⌵	AMD Opteron 170	<div></div>	648	NA
⌵	ARM Cortex-A53 8 Core 1512 MHz	<div></div>	648	NA
⌵	Intel Pentium 987 @ 1.50GHz	<div></div>	646	NA
⌵	Intel Pentium 967 @ 1.30GHz	<div></div>	643	NA
⌵	AMD GX-412TC SOC	<div></div>	641	NA
⌵	AMD Athlon 64 X2 QL-66	<div></div>	641	NA
⌵	Intel Pentium E2160 @ 1.80GHz	<div></div>	641	\$20.00
⌵	AMD A4-3320M APU	<div></div>	640	\$39.00*
⌵	ARM Cortex-A53 4 Core 1908 MHz	<div></div>	638	NA
⌵	Rockchip (Device Tree)	<div></div>	637	NA
⌵	AMD Turion X2 Dual-Core Mobile RM-77	<div></div>	635	NA
⌵	Intel Atom Z3740 @ 1.33GHz	<div></div>	634	NA
⌵	Intel Core2 Duo T5550 @ 1.83GHz	<div></div>	634	NA
⌵	AMD Turion 64 X2 Mobile TL-60	<div></div>	631	\$15.95*

≡	Allwinner H618	<div></div>	631	NA
≡	ARM Cortex-A55 4 Core 1800 MHz	<div></div>	631	NA
≡	AMD Athlon 64 X2 Dual Core 3800+	<div></div>	630	NA
≡	Qualcomm MSM8974PRO-AC	<div></div>	630	NA
≡	Intel Core2 Duo T5800 @ 2.00GHz	<div></div>	629	NA
≡	Intel Celeron E1500 @ 2.20GHz	<div></div>	626	\$19.65*
≡	AMD Turion X2 Dual-Core Mobile RM-70	<div></div>	624	NA
≡	Intel Pentium U5600 @ 1.33GHz	<div></div>	624	NA
≡	Intel Pentium T3200 @ 2.00GHz	<div></div>	623	\$12.00*
≡	Intel Pentium 957 @ 1.20GHz	<div></div>	622	\$134.00*
≡	AMD Athlon 64 X2 QL-65	<div></div>	622	\$22.00*
≡	Intel Atom Z3745 @ 1.33GHz	<div></div>	621	\$30.00*
≡	AMD Athlon 64 X2 Dual-Core TK-57	<div></div>	620	NA
≡	Celeron Dual-Core T3300 @ 2.00GHz	<div></div>	620	\$14.97*
≡	MT6795MM	<div></div>	618	NA
≡	AMD Athlon 64 X2 QL-64	<div></div>	617	NA
≡	Intel Celeron N3000 @ 1.04GHz	<div></div>	616	NA
≡	Intel Core2 Duo E6300 @ 1.86GHz	<div></div>	615	\$127.61*
≡	Intel Atom Z3740D @ 1.33GHz	<div></div>	614	NA
≡	Intel Celeron N3010 @ 1.04GHz	<div></div>	612	NA
≡	AMD Athlon 64 X2 Dual Core 3600+	<div></div>	610	\$68.25*
≡	Intel Core2 Duo L7700 @ 1.80GHz	<div></div>	607	NA
≡	MediaTek MT8163	<div></div>	604	NA
≡	AMD Turion X2 Dual Core L510	<div></div>	603	NA
≡	AMD E1-2500 APU	<div></div>	602	NA
≡	AMD Turion II Neo N40L Dual-Core	<div></div>	602	NA
≡	AMD E1 Micro-6200T APU	<div></div>	600	NA
≡	Intel Xeon 5110 @ 1.60GHz	<div></div>	600	\$35.00*
≡	Generic DT based system	<div></div>	600	NA
≡	AMD TurionX2 Ultra DualCore Mobile ZM-87	<div></div>	599	NA
≡	Samsung GrandPrimePlus LTE LTN DTV rev04 board bas	<div></div>	599	NA
≡	Intel Celeron G470 @ 2.00GHz	<div></div>	599	\$35.15*
≡	Intel Atom Z3745D @ 1.33GHz	<div></div>	599	NA
≡	AMD GX-212JC SOC	<div></div>	598	NA
≡	Intel Core2 Duo T7100 @ 1.80GHz	<div></div>	598	\$14.99*
≡	AMD Sempron 150	<div></div>	597	\$14.95*
≡	MediaTek MT6762V/CN	<div></div>	597	NA
≡	Qualcomm APQ 8084 (Flattened Device Tree)	<div></div>	596	NA
≡	Intel Celeron J1750 @ 2.41GHz	<div></div>	595	NA
≡	rk3566	<div></div>	595	NA
≡	AMD Athlon 64 X2 Dual Core BE-2300	<div></div>	594	NA
≡	AMD Opteron 1212	<div></div>	593	\$290.00*
≡	Intel Celeron J1800 @ 2.41GHz	<div></div>	592	NA
≡	Amlogic	<div></div>	592	NA
≡	Intel Celeron N3050 @ 1.60GHz	<div></div>	592	\$170.00*
≡	AMD Athlon II X2 250u	<div></div>	592	\$24.95
≡	AMD Athlon X2 Dual Core BE-2350	<div></div>	591	NA
≡	Intel Core2 Duo T5470 @ 1.60GHz	<div></div>	590	NA
≡	Intel Core2 Duo L7500 @ 1.60GHz	<div></div>	589	NA
≡	Qualcomm APQ8084	<div></div>	589	NA
≡	AMD Turion Dual-Core RM-74	<div></div>	588	NA

Intel Celeron N2840 @ 2.16GHz	<div></div>	588	NA
Intel Pentium 2129Y @ 1.10GHz	<div></div>	587	\$134.00*
AMD E1-7010 APU	<div></div>	584	NA
Celeron Dual-Core T3100 @ 1.90GHz	<div></div>	584	\$32.00
Intel Celeron 847E @ 1.10GHz	<div></div>	584	NA
Intel Atom C2338 @ 1.74GHz	<div></div>	584	NA
AMD Athlon 64 X2 QL-67	<div></div>	582	NA
AMD E1-6015 APU	<div></div>	582	NA
Intel Xeon MV 3.20GHz	<div></div>	582	NA
MT6761V/WD	<div></div>	580	NA
Intel Celeron U3600 @ 1.20GHz	<div></div>	579	NA
Intel Core2 Duo U9600 @ 1.60GHz	<div></div>	578	NA
Intel Atom C2358 @ 1.74GHz	<div></div>	578	NA
Intel Core2 Duo T5670 @ 1.80GHz	<div></div>	577	NA
AMD Athlon 64 X2 Dual-Core TK-42	<div></div>	577	NA
Intel Celeron 1019Y @ 1.00GHz	<div></div>	576	NA
ARM Cortex-A72 4 Core 1700 MHz	<div></div>	574	NA
AMD Athlon 64 X2 Dual Core BE-2350	<div></div>	573	NA
AMD E2-7015	<div></div>	572	NA
AMD Athlon X2 Dual Core BE-2300	<div></div>	570	\$89.95*
Intel Pentium T2390 @ 1.86GHz	<div></div>	570	NA
Intel Core2 Duo T5300 @ 1.73GHz	<div></div>	569	NA
Intel Celeron 857 @ 1.20GHz	<div></div>	569	NA
Intel Pentium D 830 @ 3.00GHz	<div></div>	568	NA
Qualcomm MSM 8974 HAMMERHEAD (Flattened Device Tre	<div></div>	566	NA
AMD Athlon 64 X2 3800+	<div></div>	566	NA
Intel Atom Z3530 @ 1.33GHz	<div></div>	565	NA
AMD Turion II Neo K625 Dual-Core	<div></div>	565	NA
Intel Pentium T2410 @ 2.00GHz	<div></div>	565	NA
AMD Athlon X2 Dual Core 6850e	<div></div>	564	NA
Intel Core2 Duo E4300 @ 1.80GHz	<div></div>	564	\$42.50*
AMD Sempron Dual Core 2200	<div></div>	563	\$39.95*
Intel Celeron T1600 @ 1.66GHz	<div></div>	562	\$19.99*
Intel Celeron 867 @ 1.30GHz	<div></div>	562	\$55.69*
AMD Turion Dual-Core RM-70	<div></div>	561	\$25.00*
AMD Sempron 2650 APU	<div></div>	561	\$168.20
Qualcomm Technologies, Inc MSM8929	<div></div>	560	NA
Intel Atom Z3735E @ 1.33GHz	<div></div>	557	\$117.00*
AMD Sempron Dual Core 2300	<div></div>	555	\$41.99*
MT8765WA	<div></div>	552	NA
ARM Cortex-A53 4 Core 1704 MHz	<div></div>	552	NA
Intel Celeron E1200 @ 1.60GHz	<div></div>	551	\$99.95*
Intel Celeron N2830 @ 2.16GHz	<div></div>	550	\$149.99*
Intel Pentium E2140 @ 1.60GHz	<div></div>	549	\$158.99*
Intel T1400 @ 1.73GHz	<div></div>	548	\$15.00*
Intel Celeron @ 1.30GHz	<div></div>	548	NA
Intel T1500 @ 1.86GHz	<div></div>	548	NA
Intel Celeron G465 @ 1.90GHz	<div></div>	547	\$36.98*
AMD Athlon 64 X2 QL-60	<div></div>	547	NA
Intel Core2 Duo T5450 @ 1.66GHz	<div></div>	547	NA
AMD E1-6010 APU	<div></div>	546	NA

Intel Core2 Duo T5250 @ 1.50GHz	<div></div>	545	\$89.95*
ARM Cortex-A72 4 Core 1600 MHz	<div></div>	545	NA
Spreadtrum SC9832E	<div></div>	543	NA
Intel Pentium T2370 @ 1.73GHz	<div></div>	543	\$25.00*
Intel Atom Z3735F @ 1.33GHz	<div></div>	542	\$500.00*
mt6762m	<div></div>	538	NA
Intel Pentium U5400 @ 1.20GHz	<div></div>	538	NA
Intel Pentium T2330 @ 1.60GHz	<div></div>	538	\$149.95*
Intel Pentium T2310 @ 1.46GHz	<div></div>	536	NA
AMD TurionX2 Dual Core Mobile RM-70	<div></div>	536	NA
AMD Athlon 64 X2 Dual-Core TK-53	<div></div>	535	NA
AMD Turion 64 X2 Mobile TL-52	<div></div>	534	NA
AMD Sempron Dual Core 2100	<div></div>	533	\$37.99*
MT6739CH	<div></div>	533	NA
AMD Athlon 64 X2 Dual Core 3400+	<div></div>	531	NA
AMD Opteron 165	<div></div>	531	\$868.54*
AMD Athlon Neo X2 Dual Core L335	<div></div>	529	NA
AMD Athlon II Neo K345 Dual-Core	<div></div>	527	NA
Intel Atom S1260 @ 2.00GHz	<div></div>	526	\$64.00*
AMD Athlon 64 X2 QL-62	<div></div>	525	NA
Intel Atom C2350 @ 1.74GHz	<div></div>	523	\$43.00*
Intel Core2 Duo SU9400 @ 1.40GHz	<div></div>	523	NA
MT6592	<div></div>	521	NA
AMD Athlon 64 X2 Dual-Core TK-55	<div></div>	518	\$72.74*
MT8167D	<div></div>	517	NA
AMD Athlon 64 FX-57	<div></div>	517	NA
SAMSUNG JF	<div></div>	516	NA
Intel T2050 @ 2.00GHz	<div></div>	516	NA
Intel Celeron N2808 @ 1.58GHz	<div></div>	516	NA
Intel Celeron U3400 @ 1.07GHz	<div></div>	516	NA
Intel Core2 Duo L7400 @ 1.50GHz	<div></div>	516	NA
Intel Core i3-330UM @ 1.20GHz	<div></div>	515	NA
Intel Core2 Duo L7300 @ 1.40GHz	<div></div>	513	NA
Intel Core2 Duo T5500 @ 1.66GHz	<div></div>	513	NA
Intel Atom D2701 @ 2.13GHz	<div></div>	511	NA
sun50iw6	<div></div>	511	NA
Qualcomm Technologies, Inc MSM8917	<div></div>	509	NA
MT8161P	<div></div>	508	NA
Rockchip RK3288 (Flattened Device Tree)	<div></div>	508	NA
MediaTek MT6735	<div></div>	507	NA
AMD Turion X2 Ultra Dual-Core Mobile ZM-80	<div></div>	506	\$49.95*
AMD Sempron 145	<div></div>	506	\$39.99
Intel Core2 Duo U7300 @ 1.30GHz	<div></div>	505	NA
Intel Atom Z3736F @ 1.33GHz	<div></div>	503	NA
AMD Sempron 130	<div></div>	501	\$30.00*
Intel Celeron N2815 @ 1.86GHz	<div></div>	499	NA
Intel Core Duo T2700 @ 2.33GHz	<div></div>	498	NA
Intel Pentium D 940 @ 3.20GHz	<div></div>	498	NA
QCT APQ8064 FLO	<div></div>	497	NA
Intel Celeron N2807 @ 1.58GHz	<div></div>	497	NA
AMD Turion X2 Dual Core Mobile RM-70	<div></div>	497	\$132.56*

⌵ MT8735	<div></div>	495	NA
⌵ Intel Celeron N2820 @ 2.13GHz	<div></div>	495	\$225.00*
⌵ Qualcomm Technologies, Inc APQ8017	<div></div>	492	NA
⌵ AMD E2-2000 APU	<div></div>	492	NA
⌵ Unisoc SC9832e	<div></div>	492	NA
⌵ Rockchip RK3328 box liantong avb	<div></div>	491	NA
⌵ Intel Atom Z3770D @ 1.49GHz	<div></div>	488	NA
⌵ AMD G-T56N	<div></div>	487	NA
⌵ Intel Celeron N2806 @ 1.60GHz	<div></div>	487	NA
⌵ AMD E-350D APU	<div></div>	486	NA
⌵ Intel Pentium SU4100 @ 1.30GHz	<div></div>	485	NA
⌵ AMD Athlon 64 3100+	<div></div>	484	NA
⌵ Intel Celeron 847 @ 1.10GHz	<div></div>	482	\$315.00*
⌵ ARM Cortex-A53 4 Core 1800 MHz	<div></div>	482	NA
⌵ Intel Xeon 3.20GHz	<div></div>	478	NA
⌵ MT8167A	<div></div>	478	NA
⌵ AMD Athlon II Neo N36L Dual-Core	<div></div>	478	NA
⌵ Intel Celeron 925 @ 2.30GHz	<div></div>	477	NA
⌵ AMD Athlon Neo X2 Dual Core L325	<div></div>	476	NA
⌵ AMD Turion 64 X2 Mobile TL-50	<div></div>	474	\$18.99*
⌵ AMD E1-2200 APU	<div></div>	474	NA
⌵ AMD Sempron 140	<div></div>	472	\$11.95*
⌵ AMD TurionX2 Dual Core Mobile RM-72	<div></div>	471	NA
⌵ Qualcomm Technologies, Inc MSM8920	<div></div>	471	NA
⌵ Intel Celeron G460 @ 1.80GHz	<div></div>	469	\$52.99
⌵ Intel Pentium Extreme Edition 955 @ 3.46GHz	<div></div>	469	\$31.23*
⌵ Intel Core2 Duo T5270 @ 1.40GHz	<div></div>	468	NA
⌵ Intel Core2 Duo L7100 @ 1.20GHz	<div></div>	467	NA
⌵ AMD Athlon 64 FX-59	<div></div>	465	NA
⌵ Rockchip rk3326 evb board	<div></div>	463	NA
⌵ Intel Atom D2700 @ 2.13GHz	<div></div>	461	NA
⌵ Intel Atom E3827 @ 1.74GHz	<div></div>	460	NA
⌵ Intel Celeron SU2300 @ 1.20GHz	<div></div>	460	NA
⌵ AMD Opteron 154	<div></div>	457	NA
⌵ ARM Cortex-A53 4 Core 1500 MHz	<div></div>	457	NA
⌵ MediaTek MT6737	<div></div>	457	NA
⌵ AMD Athlon Neo X2 Dual Core 6850e	<div></div>	456	NA
⌵ Qualcomm Technologies, Inc QM215	<div></div>	455	NA
⌵ Intel Core2 Duo T5200 @ 1.60GHz	<div></div>	454	NA
⌵ QCT APQ8064 DEB	<div></div>	453	NA
⌵ AMD Turion 64 X2 Mobile TL-56	<div></div>	451	\$65.40*
⌵ AMD Opteron 254	<div></div>	451	NA
⌵ Intel Core Duo T2600 @ 2.16GHz	<div></div>	450	NA
⌵ AMD Turion 64 X2 Mobile TL-58	<div></div>	447	NA
⌵ ARM Cortex-A53 4 Core 1512 MHz	<div></div>	445	NA
⌵ AMD G-T56E	<div></div>	442	NA
⌵ Intel Core2 Duo U9300 @ 1.20GHz	<div></div>	440	NA
⌵ Samsung Exynos 7570	<div></div>	439	NA
⌵ AMD E2-1800 APU	<div></div>	438	NA
⌵ Intel Atom N2800 @ 1.86GHz	<div></div>	438	NA
⌵ Intel Atom D2550 @ 1.86GHz	<div></div>	434	NA

Intel Atom D2560 @ 2.00GHz	<div></div>	433	NA
AMD Turion Neo X2 Dual Core L625	<div></div>	432	NA
AMD E-450 APU	<div></div>	431	NA
Intel Pentium D 915 @ 2.80GHz	<div></div>	430	NA
AMD Athlon LE-1640	<div></div>	430	\$89.95*
Intel Core2 Duo U7700 @ 1.33GHz	<div></div>	429	NA
AMD Opteron 152	<div></div>	428	NA
Sony Mobile fusion3	<div></div>	428	NA
AMD G-T48E	<div></div>	428	NA
ARM Cortex-A53 4 Core 1296 MHz	<div></div>	425	NA
Intel Celeron G440 @ 1.60GHz	<div></div>	425	\$100.00
Intel Xeon 3.00GHz	<div></div>	425	NA
Qualcomm MSM8916	<div></div>	424	NA
ARM Cortex-A53 4 Core 1600 MHz	<div></div>	424	NA
AMD E-350 APU	<div></div>	423	NA
MediaTek MT6739WW	<div></div>	422	NA
AMD Athlon LE-1620	<div></div>	421	\$18.00*
Intel Celeron N2810 @ 2.00GHz	<div></div>	420	\$139.99*
MT8765WB	<div></div>	419	NA
ARM Cortex-A53 4 Core 1392 MHz	<div></div>	417	NA
AMD Sempron LE-1300	<div></div>	417	\$27.00*
AMD Athlon II Neo K325 Dual-Core	<div></div>	417	\$25.99*
AMD Athlon LE-1660	<div></div>	416	NA
AMD E-350	<div></div>	415	NA
Samsung GrandPrimePlus LTE LTN OPEN rev04 board ba	<div></div>	415	NA
Intel Celeron 450 @ 2.20GHz	<div></div>	415	\$299.00*
AMD Athlon LE-1600	<div></div>	412	\$21.00*
AMD Athlon 1640B	<div></div>	412	\$50.00*
AMD A4-1250 APU	<div></div>	411	NA
ARM Cortex-A53 4 Core 1199 MHz	<div></div>	410	NA
Qualcomm Technologies, Inc QCM2150	<div></div>	409	NA
Intel Core Duo T2500 @ 2.00GHz	<div></div>	408	\$119.99*
AMD E1-2100 APU	<div></div>	407	NA
Intel Atom E3805 @ 1.33GHz	<div></div>	406	\$20.00*
Intel Atom D510 @ 1.66GHz	<div></div>	406	\$97.16*
Intel Core2 Duo U7500 @ 1.06GHz	<div></div>	405	NA
MT8735P	<div></div>	405	NA
AMD Athlon 64 FX-55	<div></div>	404	\$65.00*
Intel Core Duo T2450 @ 2.00GHz	<div></div>	404	NA
Intel Core Duo L2500 @ 1.83GHz	<div></div>	404	NA
Intel Xeon 3.60GHz	<div></div>	403	\$851.00*
AMD E1-1500 APU	<div></div>	402	NA
Intel Core i7-2630UM @ 1.60GHz	<div></div>	400	NA
AMD Turion 64 Mobile ML-42	<div></div>	400	NA
AMD Geode NX 2400+	<div></div>	400	NA
Rockchip rk3326 863 rkisp1 board	<div></div>	399	NA
QCT APQ8064 MAKO	<div></div>	399	NA
ARM ARMv7 rev 4 (v7l) 4 Core 1400 MHz	<div></div>	399	NA
AMD V140	<div></div>	397	\$39.95*
Intel Celeron 900 @ 2.20GHz	<div></div>	397	\$18.99
MediaTek MT6739WA	<div></div>	397	NA

AMD Athlon 64 3500+	<div></div>	396	\$79.95*
ARM ARMv7 rev 4 (v7l) 4 Core 1200 MHz	<div></div>	396	NA
AMD Athlon 64 3700+	<div></div>	394	\$89.95*
VIA Nano X2 U4025 @ 1.2 GHz	<div></div>	393	NA
AMD Opteron 150	<div></div>	393	\$352.94
Intel Xeon 3.80GHz	<div></div>	393	\$851.00*
AMD Opteron 148	<div></div>	392	NA
Intel Celeron 807 @ 1.50GHz	<div></div>	392	NA
Qualcomm Technologies, Inc MSM8916	<div></div>	391	NA
Intel Atom D525 @ 1.80GHz	<div></div>	390	NA
QCT APQ8064 MTP	<div></div>	389	NA
Intel Core Duo L2300 @ 1.50GHz	<div></div>	387	NA
Intel Pentium 4 3.73GHz	<div></div>	385	NA
AMD Turion 64 Mobile ML-44	<div></div>	384	NA
Intel Core Duo T2350 @ 1.86GHz	<div></div>	384	NA
Intel Pentium T2130 @ 1.86GHz	<div></div>	382	NA
QCT APQ8064 AWIFI	<div></div>	382	NA
AMD E1-1200 APU	<div></div>	378	NA
Intel Atom E3825 @ 1.33GHz	<div></div>	378	\$70.32*
Qualcomm Technologies, Inc APQ8016	<div></div>	378	NA
AMD Athlon 64 3300+	<div></div>	375	NA
Intel Xeon 3.40GHz	<div></div>	375	NA
Intel Pentium D 805 @ 2.66GHz	<div></div>	374	NA
Intel Celeron D 360 @ 3.46GHz	<div></div>	372	NA
MediaTek MT8735B	<div></div>	371	NA
Intel Celeron 827E @ 1.40GHz	<div></div>	371	NA
AMD A4-1200 APU	<div></div>	369	NA
Intel Celeron 440 @ 2.00GHz	<div></div>	368	\$34.99
MediaTek MT8167B	<div></div>	366	NA
AMD Sempron 3600+	<div></div>	364	\$15.00*
AMD Turion 64 Mobile MK-38	<div></div>	362	NA
Intel Core Duo T2400 @ 1.83GHz	<div></div>	361	\$16.00*
AMD Sempron 3800+	<div></div>	360	\$14.99*
Intel Pentium 4 3.80GHz	<div></div>	358	NA
MT8735M	<div></div>	358	NA
AMD Athlon II 160u	<div></div>	358	\$29.99*
AMD Athlon X2 Dual Core 3250e	<div></div>	357	NA
Mobile AMD Athlon 64 3700+	<div></div>	356	NA
Manta	<div></div>	356	NA
Intel Atom 330 @ 1.60GHz	<div></div>	356	NA
MediaTek MT6737M	<div></div>	355	NA
ARM Cortex-A7 4 Core 1368 MHz	<div></div>	353	NA
AMD V120	<div></div>	352	NA
Intel Core Duo T2250 @ 1.73GHz	<div></div>	350	NA
AMD Sempron LE-1200	<div></div>	349	\$14.95*
Intel Pentium T2080 @ 1.73GHz	<div></div>	348	\$149.95*
Intel Core Duo L2400 @ 1.66GHz	<div></div>	348	NA
Intel Core2 Duo U7600 @ 1.20GHz	<div></div>	347	NA
AMD Opteron 146	<div></div>	346	\$35.00*
Mobile Intel Pentium 4 3.33GHz	<div></div>	344	NA
Intel Celeron 570 @ 2.26GHz	<div></div>	344	NA

ARM Cortex-A53 4 Core 1152 MHz	<div></div>	343	NA
AMD E-300 APU	<div></div>	342	NA
Intel 2.80GHz	<div></div>	341	NA
ARM Cortex-A7 4 Core 1300 MHz	<div></div>	341	NA
Intel Atom N570 @ 1.66GHz	<div></div>	341	\$86.00*
AMD Athlon 64 4000+	<div></div>	340	\$99.95*
AMD Athlon II 170u	<div></div>	340	\$24.00*
Unisoc SC7731e	<div></div>	339	NA
Intel Celeron 560 @ 2.13GHz	<div></div>	339	\$69.95
AMD Athlon TF-36	<div></div>	338	NA
AMD Sempron M100	<div></div>	338	\$12.00*
AMD V160	<div></div>	337	NA
Qualcomm MSM8928	<div></div>	337	NA
AMD Turion 64 Mobile ML-40	<div></div>	336	NA
Mobile AMD Sempron 3800+	<div></div>	335	NA
ARM Cortex-A72 4 Core 1750 MHz	<div></div>	335	NA
Intel Celeron N2805 @ 1.46GHz	<div></div>	335	NA
AMD Turion 64 Mobile ML-37	<div></div>	334	\$25.99*
ARM Cortex-A35 4 Core 1296 MHz	<div></div>	334	NA
AMD Turion 64 Mobile MK-36	<div></div>	334	NA
AMD Athlon 64 3000+	<div></div>	334	\$20.00*
Mobile AMD Athlon 64 3400+	<div></div>	333	NA
AMD Athlon 2850e	<div></div>	333	NA
Qualcomm MSM8228	<div></div>	332	NA
Intel Pentium 4 3.20GHz	<div></div>	331	NA
Intel Pentium T2060 @ 1.60GHz	<div></div>	330	NA
ARM Cortex-A35 4 Core 1200 MHz	<div></div>	329	NA
VIA Eden X2 U4200 @ 1.0+ GHz	<div></div>	327	NA
Intel Core Duo T2300 @ 1.66GHz	<div></div>	326	NA
Mobile AMD Athlon 64 3200+	<div></div>	326	NA
MT6735P	<div></div>	326	NA
AMD Athlon X2 Dual Core L310	<div></div>	324	NA
Intel Atom N2600 @ 1.60GHz	<div></div>	323	NA
ARM Cortex-A53 4 Core 1368 MHz	<div></div>	322	NA
Qualcomm MSM8226	<div></div>	322	NA
Qualcomm Technologies, Inc APQ8009	<div></div>	321	NA
Intel Core Duo T2050 @ 1.60GHz	<div></div>	320	NA
Rockchip RK3326	<div></div>	319	NA
Rockchip RK3328	<div></div>	319	NA
Intel Celeron 550 @ 2.00GHz	<div></div>	319	\$54.95*
AMD Athlon 64 3400+	<div></div>	317	\$99.95*
AMD Opteron 144	<div></div>	316	\$29.95*
AMD Sempron LE-1100	<div></div>	315	\$34.95*
AMD Turion 64 Mobile MT-37	<div></div>	315	NA
Intel Pentium 4 3.60GHz	<div></div>	315	NA
AMD Sempron 3300+	<div></div>	315	\$20.00*
AMD C-70 APU	<div></div>	314	NA
Intel Celeron 540 @ 1.86GHz	<div></div>	314	\$20.95
Intel Celeron D 420 @ 1.60GHz	<div></div>	313	NA
Mobile AMD Athlon 64 4000+	<div></div>	313	NA
Samsung GrandPrimePlus LTE CIS rev04 board based o	<div></div>	312	NA
AMD C-60 APU	<div></div>	311	NA

⌵	MT6739WM	<div></div>	310	NA
⌵	Intel Pentium 4 3.00GHz	<div></div>	310	NA
⌵	MT6735M	<div></div>	308	NA
⌵	Intel Celeron 3.06GHz	<div></div>	307	NA
⌵	ARM Cortex-A53 4 Core 1400 MHz	<div></div>	305	NA
⌵	AMD Z-01	<div></div>	305	NA
⌵	Intel Atom E3826 @ 1.46GHz	<div></div>	304	NA
⌵	Mobile AMD Sempron 3600+	<div></div>	302	NA
⌵	AMD Athlon II Neo K125	<div></div>	302	NA
⌵	UNIVERSAL3475	<div></div>	301	NA
⌵	AMD Sempron LE-1250	<div></div>	301	\$99.99*
⌵	Qualcomm MSM8926	<div></div>	300	NA
⌵	AMD G-T40N	<div></div>	299	NA
⌵	Intel Atom Z2760 @ 1.80GHz	<div></div>	298	NA
⌵	AMD Sempron 3100+	<div></div>	298	\$65.00*
⌵	AMD Athlon II Neo K145	<div></div>	298	NA
⌵	Intel Pentium 4 3.46GHz	<div></div>	295	NA
⌵	AMD Athlon 64 2800+	<div></div>	295	\$99.99*
⌵	Intel Pentium 4 3.40GHz	<div></div>	295	NA
⌵	Spreadtrum SC7731e	<div></div>	294	NA
⌵	Qualcomm MSM8626	<div></div>	294	NA
⌵	Mobile AMD Sempron 3300+	<div></div>	294	NA
⌵	AMD Athlon 64 3200+	<div></div>	293	\$149.95*
⌵	AMD Athlon 64 3800+	<div></div>	292	\$131.01*
⌵	AMD Sempron 3400+	<div></div>	292	\$86.68*
⌵	Qualcomm Technologies, Inc MSM8216	<div></div>	292	NA
⌵	Intel Pentium M 2.10GHz	<div></div>	292	NA
⌵	Qualcomm APQ8026	<div></div>	291	NA
⌵	AMD Athlon 2800+	<div></div>	291	\$109.95*
⌵	Intel Celeron M 530 @ 1.73GHz	<div></div>	291	NA
⌵	AMD C-60	<div></div>	290	NA
⌵	AMD G-T40E	<div></div>	289	NA
⌵	AMD Sempron SI-40	<div></div>	288	\$12.00*
⌵	AMD Turion 64 Mobile MT-32	<div></div>	286	NA
⌵	AMD Turion 64 Mobile ML-32	<div></div>	285	NA
⌵	Intel Atom N550 @ 1.50GHz	<div></div>	283	\$86.00*
⌵	AMD Athlon XP 3100+	<div></div>	282	NA
⌵	AMD Athlon XP 3200+	<div></div>	281	NA
⌵	Intel Pentium M 1.80GHz	<div></div>	280	NA
⌵	ARM Cortex-A53 4 Core 1200 MHz	<div></div>	280	NA
⌵	Intel Celeron 430 @ 1.80GHz	<div></div>	280	\$29.99
⌵	ARM Cortex-A72 4 Core 800 MHz	<div></div>	279	NA
⌵	AMD Turion 64 Mobile MT-34	<div></div>	279	NA
⌵	VIA Nano L2100@1800MHz	<div></div>	279	NA
⌵	Mobile AMD Sempron 3100+	<div></div>	277	NA
⌵	AMD Turion 64 Mobile ML-30	<div></div>	277	NA
⌵	AMD Turion 64 Mobile ML-34	<div></div>	277	NA
⌵	AMD Athlon XP 2900+	<div></div>	276	NA
⌵	AMD Athlon 2650e	<div></div>	274	\$19.00*
⌵	Intel Celeron D 352 @ 3.20GHz	<div></div>	274	NA
⌵	Qualcomm Technologies, Inc MSM8909	<div></div>	271	NA

Intel Pentium M 2.13GHz	<div></div>	271	NA
ARM Cortex-A7 4 Core 1200 MHz	<div></div>	270	NA
Intel Pentium M 2.00GHz	<div></div>	270	NA
AMD Athlon Neo MV-40	<div></div>	270	NA
Mobile AMD Sempron 3400+	<div></div>	269	NA
ARM Cortex-A7 4 Core 1008 MHz	<div></div>	269	NA
Mobile AMD Sempron 3000+	<div></div>	269	NA
Intel Celeron 530 @ 1.73GHz	<div></div>	268	\$13.00
AMD Sempron SI-42	<div></div>	268	\$29.99*
Intel Celeron 743 @ 1.30GHz	<div></div>	268	NA
AMD Sempron 3000+	<div></div>	268	\$34.95*
AMD Sempron 210U	<div></div>	267	NA
Intel Celeron 3.20GHz	<div></div>	267	NA
Intel Celeron M 723 @ 1.20GHz	<div></div>	267	NA
AMD C-50	<div></div>	265	NA
AMD Athlon TF-20	<div></div>	265	NA
Intel Celeron 3.33GHz	<div></div>	263	NA
VIA Eden C1050@1.06GHz	<div></div>	263	NA
AMD Z-60 APU	<div></div>	262	NA
AMD Athlon XP 3000+	<div></div>	262	\$79.70*
AMD Athlon XP 2800+	<div></div>	260	NA
Intel Xeon 2.80GHz	<div></div>	260	NA
Mobile AMD Sempron 2600+	<div></div>	256	NA
AMD Athlon XP 2700+	<div></div>	256	\$84.79*
Intel Core Duo U2400 @ 1.06GHz	<div></div>	255	NA
AMD Turion 64 Mobile ML-28	<div></div>	254	NA
Intel Core Solo T1400 @ 1.83GHz	<div></div>	253	NA
AMD Sempron 2600+	<div></div>	253	\$34.95*
Intel Celeron M 1.70GHz	<div></div>	252	NA
msm8960dt	<div></div>	252	NA
Intel Core2 Solo U3500 @ 1.40GHz	<div></div>	252	NA
AMD Sempron LE-1150	<div></div>	251	\$14.94*
Intel Celeron D 356 @ 3.33GHz	<div></div>	251	NA
AMD Sempron 3200+	<div></div>	251	\$124.68*
Intel Pentium 4 3.06GHz	<div></div>	249	NA
ARM Cortex-A53 4 Core 1000 MHz	<div></div>	248	NA
AMD GX-210JA SOC	<div></div>	248	NA
SAMSUNG SERRANO	<div></div>	247	NA
AMD Sempron M120	<div></div>	247	NA
AMD Turion 64 Mobile MT-30	<div></div>	246	NA
Mobile AMD Sempron 3200+	<div></div>	245	NA
AMD Athlon XP2400+	<div></div>	243	NA
AMD Athlon 64 2600+	<div></div>	243	NA
AMD Sempron 2800+	<div></div>	243	\$29.95*
AMD Athlon XP 2600+	<div></div>	242	\$23.03*
Mobile AMD Athlon XP-M 2600+	<div></div>	241	NA
Mobile AMD Athlon 2500+	<div></div>	241	NA
Intel Celeron 807UE @ 1.00GHz	<div></div>	241	NA
Intel Pentium M 1.50GHz	<div></div>	240	NA
Intel Pentium M 1.70GHz	<div></div>	239	NA
ARM Cortex-A7 4 Core 900 MHz	<div></div>	239	NA
Intel Pentium SU2700 @ 1.30GHz	<div></div>	239	NA

⌵ Mobile AMD Athlon XP-M 3000+	<div></div>	238	NA
⌵ VIA Nano L2007@1600MHz	<div></div>	238	NA
⌵ Mobile AMD Athlon XP-M 2800+	<div></div>	238	NA
⌵ Intel Pentium M 1700MHz	<div></div>	237	NA
⌵ Mobile AMD Sempron 3500+	<div></div>	237	NA
⌵ Mobile AMD Athlon XP-M 2200+	<div></div>	237	NA
⌵ Mobile AMD Sempron 2800+	<div></div>	237	NA
⌵ Intel Pentium 4 2.80GHz	<div></div>	237	NA
⌵ Intel Celeron 420 @ 1.60GHz	<div></div>	235	\$49.95
⌵ AMD Athlon XP 2400+	<div></div>	234	\$79.99*
⌵ Rockchip RK3229	<div></div>	234	NA
⌵ Intel Core2 Solo U2100 @ 1.06GHz	<div></div>	233	NA
⌵ Mobile AMD Athlon 4 2400+	<div></div>	233	NA
⌵ Intel Atom D2500 @ 1.86GHz	<div></div>	233	NA
⌵ Intel Celeron D 347 @ 3.06GHz	<div></div>	232	NA
⌵ Mobile Intel Pentium 4 3.20GHz	<div></div>	232	NA
⌵ AMD Sempron 3500+	<div></div>	232	\$24.99*
⌵ AMD Athlon XP 2500+	<div></div>	231	NA
⌵ Intel Celeron 2.93GHz	<div></div>	230	NA
⌵ Intel Celeron M 450 @ 2.00GHz	<div></div>	230	NA
⌵ Intel Pentium M 2.26GHz	<div></div>	227	NA
⌵ Mobile AMD Athlon XP-M 2500+	<div></div>	226	NA
⌵ Mobile AMD Athlon XP-M 2400+	<div></div>	225	NA
⌵ Intel Pentium M 1.40GHz	<div></div>	225	NA
⌵ Intel Atom N470 @ 1.83GHz	<div></div>	224	NA
⌵ Intel Celeron 2.53GHz	<div></div>	222	NA
⌵ Intel Pentium M 1.86GHz	<div></div>	222	NA
⌵ Intel Celeron M 360 1.40GHz	<div></div>	221	NA
⌵ Intel Core Duo U2500 @ 1.20GHz	<div></div>	220	NA
⌵ ARM Cortex-A53 4 Core 600 MHz	<div></div>	220	NA
⌵ Mobile Intel Pentium 4 3.06GHz	<div></div>	220	NA
⌵ Intel Celeron M 1500MHz	<div></div>	217	NA
⌵ Intel Celeron M 1.50GHz	<div></div>	216	NA
⌵ Intel Celeron M 520 @ 1.60GHz	<div></div>	215	NA
⌵ Intel Pentium 4 2.60GHz	<div></div>	215	NA
⌵ AMD Athlon XP 2200+	<div></div>	214	\$84.95*
⌵ Intel Celeron 723 @ 1.20GHz	<div></div>	213	NA
⌵ AMD Athlon XP 2100+	<div></div>	210	\$63.75*
⌵ Intel Core Solo T1300 @ 1.66GHz	<div></div>	210	NA
⌵ Intel Celeron 220 @ 1.20GHz	<div></div>	209	NA
⌵ Intel Pentium M 1400MHz	<div></div>	208	NA
⌵ ARM Cortex-A53 4 Core 1536 MHz	<div></div>	208	NA
⌵ ARM Cortex-A53 4 Core 1333 MHz	<div></div>	207	NA
⌵ AMD Sempron 2500+	<div></div>	207	\$59.95*
⌵ AMD Sempron 2300+	<div></div>	207	\$45.00*
⌵ Intel Celeron M 1.30GHz	<div></div>	205	NA
⌵ Mobile Intel Pentium 4 2.80GHz	<div></div>	205	NA
⌵ Intel Pentium M 1.73GHz	<div></div>	205	NA
⌵ AMD Sempron 2400+	<div></div>	205	\$12.99*
⌵ AMD Athlon XP 1900+	<div></div>	203	\$45.80*
⌵ Intel Atom 230 @ 1.60GHz	<div></div>	203	NA
⌵ Intel Atom N450 @ 1.66GHz	<div></div>	202	NA

Intel Pentium M 1.20GHz	<div></div>	199	NA
ARM Cortex-A72 4 Core 1850 MHz	<div></div>	199	NA
VIA Nano U2500@1200MHz	<div></div>	199	NA
RK30board	<div></div>	198	NA
Intel Pentium M 1300MHz	<div></div>	197	NA
Intel Celeron M 1300MHz	<div></div>	197	NA
AMD Athlon L110	<div></div>	197	NA
Intel Atom D425 @ 1.80GHz	<div></div>	197	\$992.98*
Intel Pentium M 1.30GHz	<div></div>	196	NA
Mobile AMD Athlon XP-M 2000+	<div></div>	196	NA
AMD E-240	<div></div>	195	NA
AMD Athlon XP 1800+	<div></div>	195	\$50.95*
AMD Athlon XP 2000+	<div></div>	195	\$58.99*
Intel Pentium III 1400S @ 1400MHz	<div></div>	194	NA
Intel Pentium M 1.60GHz	<div></div>	194	NA
Intel Core Solo T1350 @ 1.86GHz	<div></div>	194	NA
Mobile AMD Athlon XP-M 1800+	<div></div>	193	NA
Intel Pentium III 1400 @ 1400MHz	<div></div>	193	NA
Intel Pentium M 1600MHz	<div></div>	193	NA
Mobile AMD Athlon MP-M 2400+	<div></div>	192	NA
AMD Athlon 1500+	<div></div>	191	NA
Intel Celeron M 1.60GHz	<div></div>	190	NA
Intel Celeron 2.80GHz	<div></div>	190	NA
Intel Atom N455 @ 1.66GHz	<div></div>	188	NA
Intel Atom N2100 @ 1.60GHz	<div></div>	188	NA
Intel Pentium M 1500MHz	<div></div>	188	NA
VIA Nano U2250 (1.6GHz Capable)	<div></div>	187	NA
Google R11 BtWifi Evt1.1	<div></div>	187	NA
Intel Atom E3815 @ 1.46GHz	<div></div>	184	\$135.00*
VIA Nano U3500@1000MHz	<div></div>	184	NA
Intel Pentium M 1.10GHz	<div></div>	184	NA
AMD V105	<div></div>	184	NA
AMD Sempron 2200+	<div></div>	184	\$39.95*
AMD Athlon XP1600+	<div></div>	183	NA
Intel Atom Z530 @ 1.60GHz	<div></div>	183	NA
Mobile Intel Celeron 1333MHz	<div></div>	183	NA
Mobile Intel Pentium 4 2.66GHz	<div></div>	182	NA
Intel Celeron 2.26GHz	<div></div>	182	NA
Intel Xeon 2.40GHz	<div></div>	180	\$9.10*
Intel Atom N475 @ 1.83GHz	<div></div>	179	NA
VIA Nano U2250@1300+MHz	<div></div>	179	NA
AMD C-30	<div></div>	178	NA
AMD G-T52R	<div></div>	177	NA
Intel Atom D410 @ 1.66GHz	<div></div>	177	\$635.99*
AMD Athlon XP 1700+	<div></div>	176	\$51.25*
Intel Atom N270 @ 1.60GHz	<div></div>	175	NA
Intel Atom N280 @ 1.66GHz	<div></div>	175	NA
AMD Athlon XP 1600+	<div></div>	174	NA
ARM Cortex-A72 4 Core 1200 MHz	<div></div>	174	NA
Intel Celeron 215 @ 1.33GHz	<div></div>	174	NA
Mobile AMD Athlon MP-M 1800+	<div></div>	173	NA
Intel Celeron M 440 @ 1.86GHz	<div></div>	169	NA

Intel Celeron M 430 @ 1.73GHz	<div></div>	169	NA
Mobile AMD Athlon XP-M 1600+	<div></div>	169	NA
AMD Athlon XP 1500+	<div></div>	167	NA
Intel Celeron 2.13GHz	<div></div>	166	NA
VIA Nano L2207@1600MHz	<div></div>	165	NA
Intel XEON 2.20GHz	<div></div>	164	NA
Intel Celeron 2.50GHz	<div></div>	164	NA
Mobile AMD Sempron 2100+	<div></div>	164	NA
Intel Core Solo U1500 @ 1.33GHz	<div></div>	164	NA
Intel Pentium III Mobile 1133MHz	<div></div>	164	NA
Intel Pentium 4 2.53GHz	<div></div>	162	NA
Intel Pentium III Mobile 1066MHz	<div></div>	160	NA
Intel Pentium 4 2.50GHz	<div></div>	160	NA
Intel Celeron 2.70GHz	<div></div>	159	NA
Intel Celeron 1200MHz	<div></div>	159	NA
Intel Atom Z670 @ 1.50GHz	<div></div>	158	NA
Intel Pentium 4 2.66GHz	<div></div>	157	NA
Intel Pentium 4 2.20GHz	<div></div>	157	NA
Intel Pentium III Mobile 1200MHz	<div></div>	156	NA
Intel Pentium M 1000MHz	<div></div>	156	NA
Intel Pentium M 1200MHz	<div></div>	155	NA
Intel Pentium 4 3.83GHz	<div></div>	154	NA
AMD Athlon 64 2000+	<div></div>	154	NA
Intel Celeron 2.66GHz	<div></div>	154	NA
Mobile Intel Celeron 2.40GHz	<div></div>	154	NA
Intel Atom N435 @ 1.33GHz	<div></div>	153	NA
Intel Xeon 2.00GHz	<div></div>	152	NA
Intel Pentium 4 2.26GHz	<div></div>	151	NA
Intel Pentium 4 2.93GHz	<div></div>	150	NA
VIA C7-D 1800MHz	<div></div>	150	NA
Intel Celeron M 1.00GHz	<div></div>	149	\$13.99
Intel Celeron 2.30GHz	<div></div>	148	NA
Mobile Intel Celeron 2.20GHz	<div></div>	147	NA
Mobile Intel Pentium III - M 1200MHz	<div></div>	146	NA
VIA C7-M 6300MHz	<div></div>	145	NA
Mobile Intel Pentium 4 - M 2.20GHz	<div></div>	143	NA
Intel Celeron 2.60GHz	<div></div>	143	NA
Intel Celeron 2.40GHz	<div></div>	143	NA
ARM Cortex-A7 2 Core 1080 MHz	<div></div>	142	NA
Intel Pentium M 900MHz	<div></div>	141	NA
Mobile Intel Pentium 4 - M 2.40GHz	<div></div>	139	NA
Intel Celeron 1000MHz	<div></div>	139	NA
Intel Celeron M 420 @ 1.60GHz	<div></div>	139	NA
Intel Celeron 2.20GHz	<div></div>	139	NA
Mobile Intel Pentium 4 - M 2.00GHz	<div></div>	138	NA
Intel Pentium 4 Mobile 1.90GHz	<div></div>	136	NA
VIA Esther 1500MHz	<div></div>	135	NA
ARM Cortex-A7 2 Core 996 MHz	<div></div>	133	NA
Intel Pentium 4 2.00GHz	<div></div>	133	NA
Mobile Intel Celeron 2.00GHz	<div></div>	133	NA
Intel Pentium 4 Mobile 2.00GHz	<div></div>	132	NA
Intel Pentium 4 2.40GHz	<div></div>	131	NA

Software

> BurnInTest

> PerformanceTest

> OSForensics

> MemTest86

> WirelessMon

> Management Console

> Zoom Search Engine

> Free Software

> USB3.0 Loopback Plugs

> USB2.0 Loopback Plugs

> PCIe Test Cards

> USB Power Delivery Tester

> Serial and Parallel Loopback Plugs

> USB Short Circuit Testers

> CPU Benchmarks

> Video Card Benchmarks

> Hard Drive Benchmarks

> RAM Benchmarks

> PC Systems Benchmarks

> Software Marketshare

> Database Benchmarks

> Android Benchmarks

> iOS Benchmarks

> Internet Bandwidth

> Company

> Contact Us

> The Press Room

>>	Intel Core Solo U1400 @ 1.20GHz	<div></div>	130	NA
>>	Mobile Intel Pentium III - M 933MHz	<div></div>	130	NA
>>	AMD G-T44R	<div></div>	130	NA
>>	Intel Core Solo U1300 @ 1.06GHz	<div></div>	127	NA
>>	Intel Celeron M 443 @ 1.20GHz	<div></div>	125	NA
>>	Intel Celeron 2.00GHz	<div></div>	125	NA
>>	AMD Sempron 200U	<div></div>	125	\$87.00*
>>	Intel Celeron M 410 @ 1.46GHz	<div></div>	123	NA
>>	Intel Celeron M 900MHz	<div></div>	123	NA
>>	Intel Atom Z520 @ 1.33GHz	<div></div>	122	NA
>>	Mobile Intel Pentium 4 - M 1.70GHz	<div></div>	121	\$135.85
>>	Mobile Intel Celeron 1.80GHz	<div></div>	121	NA
>>	AMD G-T40R	<div></div>	120	NA
>>	Mobile Intel Pentium 4 - M 1.80GHz	<div></div>	119	NA
>>	Intel Pentium III Mobile 800MHz	<div></div>	119	\$79.00
>>	Mobile Intel Celeron 1.70GHz	<div></div>	118	NA
>>	Intel Pentium 4 Mobile 1.60GHz	<div></div>	116	NA
>>	VIA C7-M 1600MHz	<div></div>	116	NA
>>	Intel Pentium 4 1.80GHz	<div></div>	115	NA
>>	Intel Pentium 4 Mobile 1.80GHz	<div></div>	114	NA
>>	Intel Pentium 4 1800MHz	<div></div>	114	NA
>>	Intel Celeron 1100MHz	<div></div>	113	\$15.00*
>>	VIA C7-M 1200MHz	<div></div>	112	NA
>>	Intel Celeron B710 @ 1.60GHz	<div></div>	106	NA
>>	Intel Pentium 4 1.90GHz	<div></div>	104	NA
>>	ARM Cortex-A7 2 Core 960 MHz	<div></div>	102	NA
>>	VIA Nehemiah	<div></div>	101	NA
>>	Intel Celeron 1.70GHz	<div></div>	101	NA
>>	Intel Pentium 4 1700MHz	<div></div>	100	\$99.99
>>	Intel Pentium III Mobile 866MHz	<div></div>	99	NA
>>	Intel Celeron 1.80GHz	<div></div>	96	NA
>>	VIA Esther 1000MHz	<div></div>	95	NA
>>	VIA Eden 1200MHz	<div></div>	93	NA
>>	Intel Pentium 4 1.70GHz	<div></div>	86	NA
>>	Intel Pentium 4 1.50GHz	<div></div>	86	NA
>>	Intel Pentium 4 1.60GHz	<div></div>	84	NA
>>	Intel Pentium 4 1400MHz	<div></div>	83	NA
>>	Intel Pentium 4 1500MHz	<div></div>	81	NA
>>	VIA Eden 1000MHz	<div></div>	80	NA
>>	Intel Pentium 4 1300MHz	<div></div>	77	NA

