



4 HSK&P SP ZOZ we Wrocławu  
WYTWORNICA PARY AT 3000 typ 3284- nr fabryczny  
0508289

013-314-0000-002



nr inwentarzowy

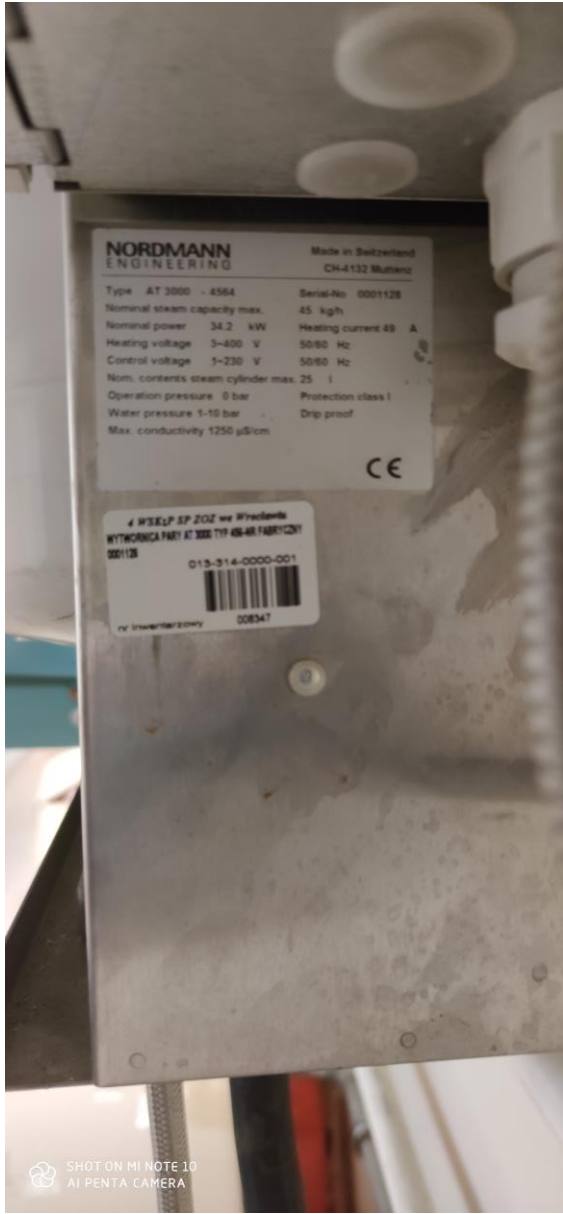
008348

**NORDMANN  
ENGINEERING**

Made in Switzerland  
CH-4143 Dornach 1

Type	AT 3000 - 4584	Serial No	0508289
Nominal steam capacity max.	45 kg/h	Heating current	49 A
Nominal power	34.2 kW		50/60 Hz
Heating voltage	3-400 V		50/60 Hz
Control voltage	1-230 V		
Nom. contents steam cylinder max.	25 l	Protection class	I
Operation pressure	0 bar	Drip proof	
Water pressure	1-10 bar		
Max. conductivity	1250 µS/cm		





**NORDMANN  
ENGINEERING**

Made in Switzerland  
CH-4132 Muttenz

Type	AT 3000 - 4564	Serial-No.	0001128
Nominal steam capacity max.	45 kg/h	Heating current	49 A
Nominal power	34.2 kW	Heating voltage	50/60 Hz
Heating voltage	3-400 V	Control voltage	50/60 Hz
Control voltage	1-230 V	Nom. contents steam cylinder max.	25 l
Operation pressure	0 bar	Protection class	I
Water pressure	1-10 bar	Drip proof	
Max. conductivity	1250 µS/cm		

CE

4 WSKŁP SP ZOZ we Wrocławiu  
WYTWORNIĄ PARY AT 3000 TYP 4564-45 FABRYCZNY  
0001128  
015-314-0000-001  
nr inwentaryzacyjny 008347

4 WSKŁP.SP.ZOZ we Wrocławiu  
WYTWORNICA PARY AT 3000 typ 3284- nr fabryczny  
0508289  
013-314-0000-002  
nr inwentarzowy 008348

**NORDMANN  
ENGINEERING** Made in Switzerland  
CH-4143 Dornach 1

Type AT 3000 - 4564	Serial-No 0508289
Nominal steam capacity max.	45 kg/h
Nominal power 34.2 kW	Heating current 49 A
Heating voltage 3-400 V	50/60 Hz
Control voltage 1-230 V	50/60 Hz
Nom. contents steam cylinder max. 25 l	Protection class I
Operation pressure 0 bar	Drip proof
Water pressure 1-10 bar	
Max. conductivity 1250 µS/cm	

CE