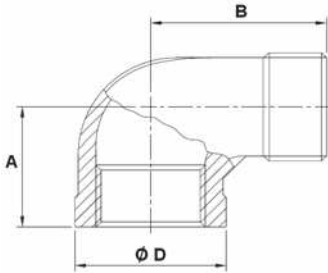


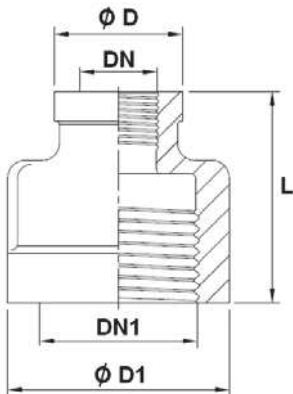
**STAINLESS STEEL FITTINGS PN20**
**SIZE ( in mm ) :**

- Elbow 90° M. F. ( DN 1/8"– 3" ) Ref. 2010



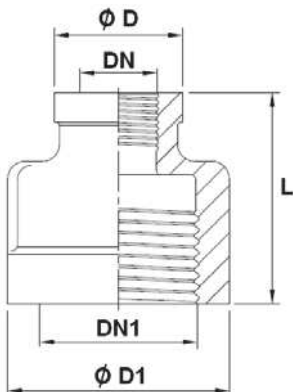
	1/8"	1/4"	3/8"	1/2"	3/4"	1"	1 1/4"	1 1/2"	2"	2 1/2"	3"
A	19	21.5	24.5	29	33.5	37	43	47	57.5	66	74
B	26.5	30.8	36.5	41	48	55	62	67	77.5	93	107
Ø D	13.9	17.2	20.9	24.9	31.2	38.1	47.4	54.1	66.6	87.4	101.8
Weig. (Kg)	0.015	0.028	0.043	0.054	0.084	0.139	0.189	0.277	0.412	0.913	1.65

- Reduced nipple F. F. ( DN 1/8"– 2" ) Ref. 2013



	1/8"	1/4"	3/8"	1/2"	3/4"	1"	1 1/4"	1 1/2"	2"
Ø D	15.5	18.2	23	28	34	41.6	50	57	70
Ø D1	18	22	28.5	34	41.5	50	57	70	86
L	24	29	34.5	36.5	41.5	47	51.5	59	70
Weight (Kg)	0.020	0.030	0.066	0.082	0.115	0.186	0.24	0.387	0.57

- Double reduced nipple F. F. ( DN 1/8"– 2" ) Ref. 2014



	1/8"	1/4"	3/8"	1/2"	3/4"	1"	1 1/4"	1 1/2"	2"
Ø D	18.1	19.5	28.2	29	34	41.5	56.5	70	86
Ø D1	22	28.5	34	41.5	50	57	70	86	101.8
L	29	34	36.5	42	46	50	59	70	86
Weight (Kg)	0.035	0.06	0.092	0.121	0.175	0.235	0.447	0.57	0.86