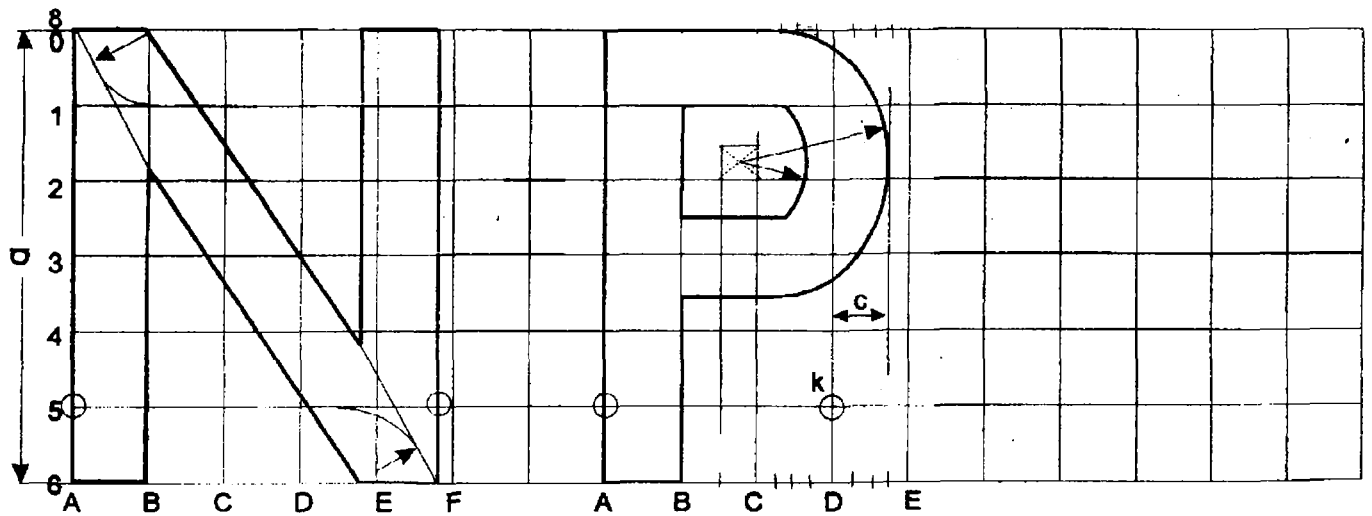
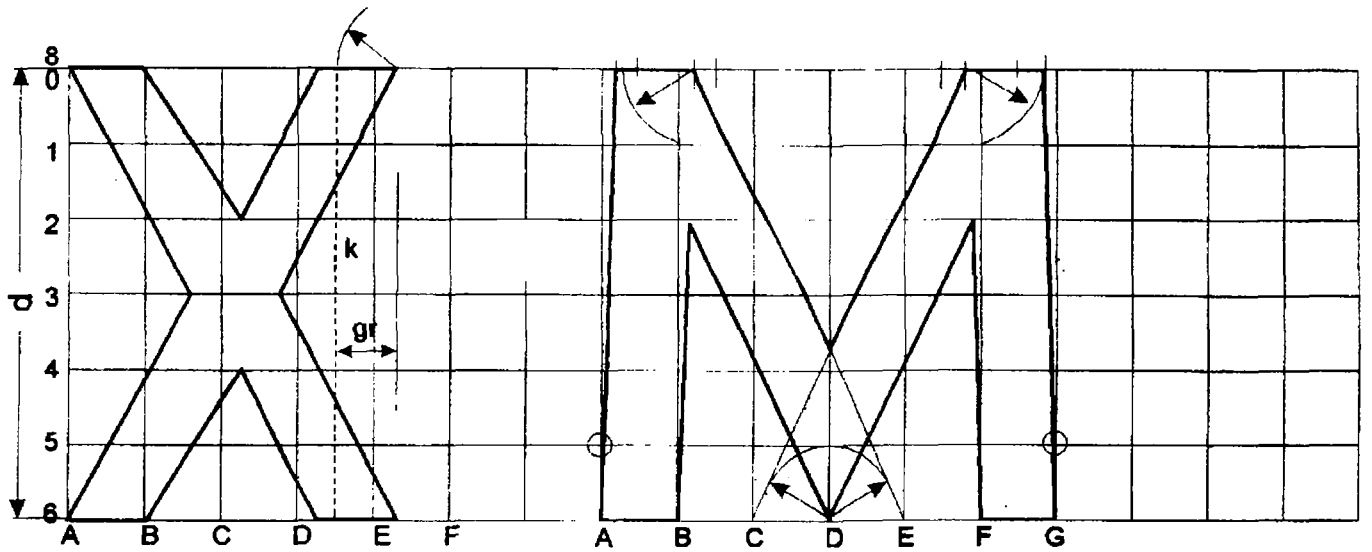
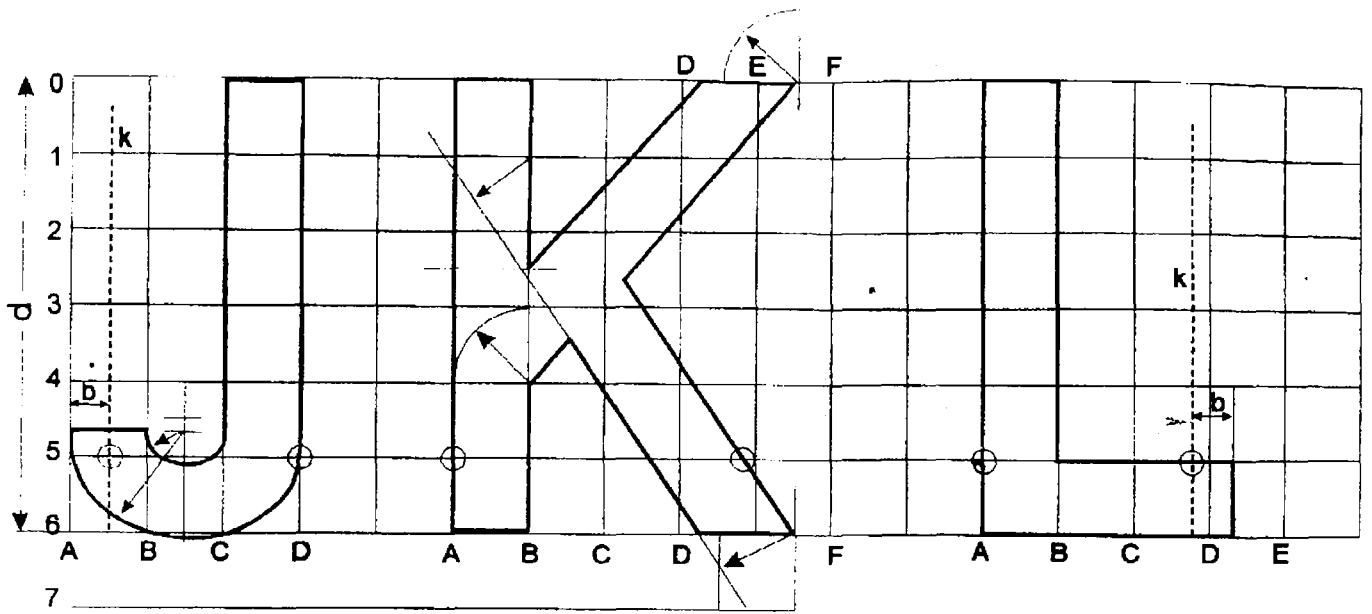
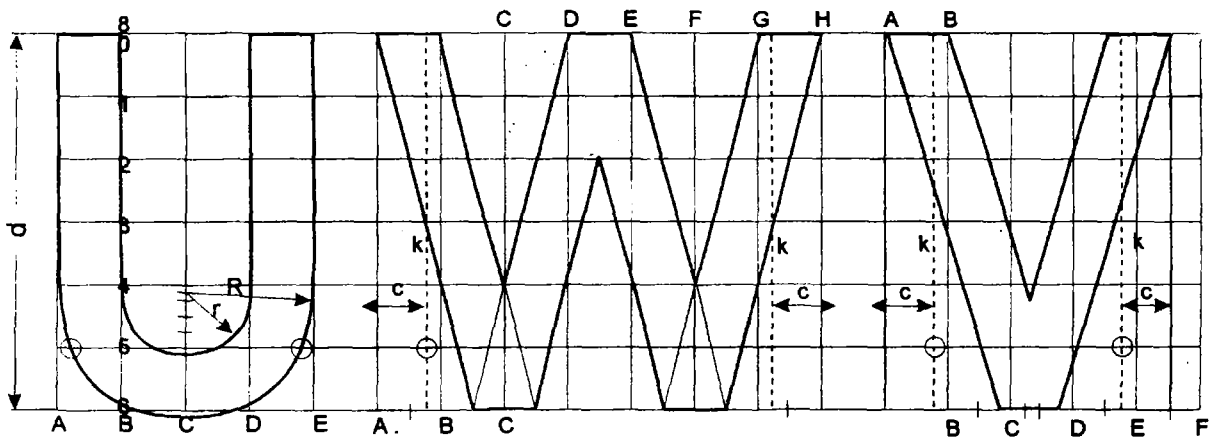
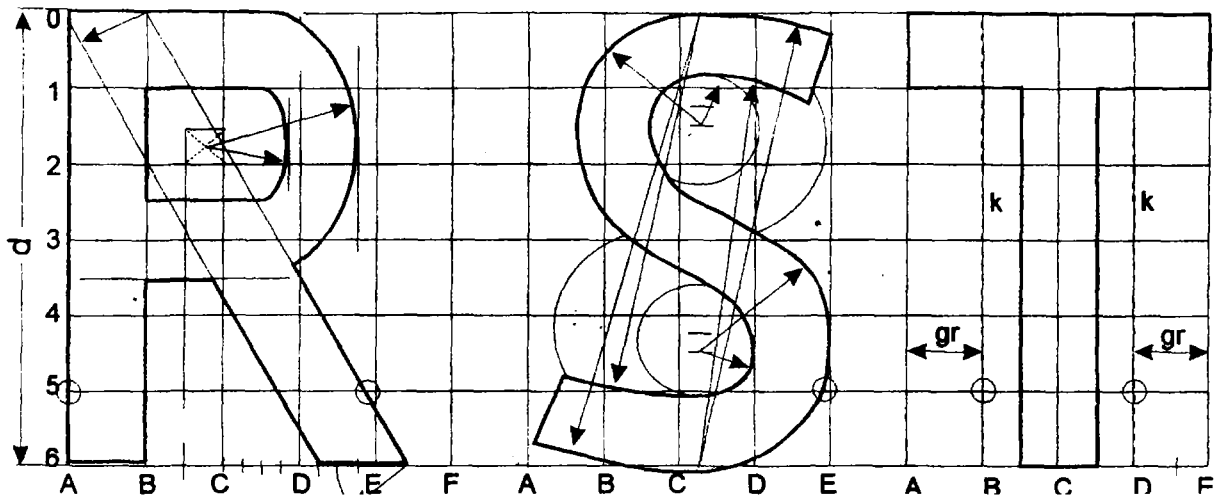
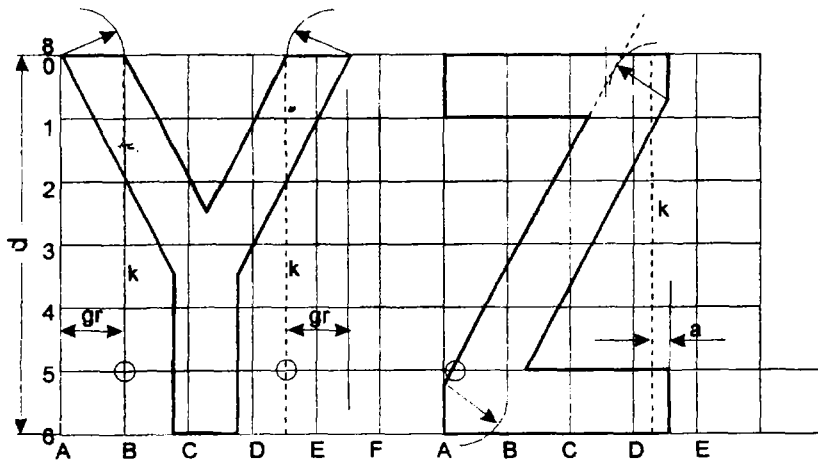


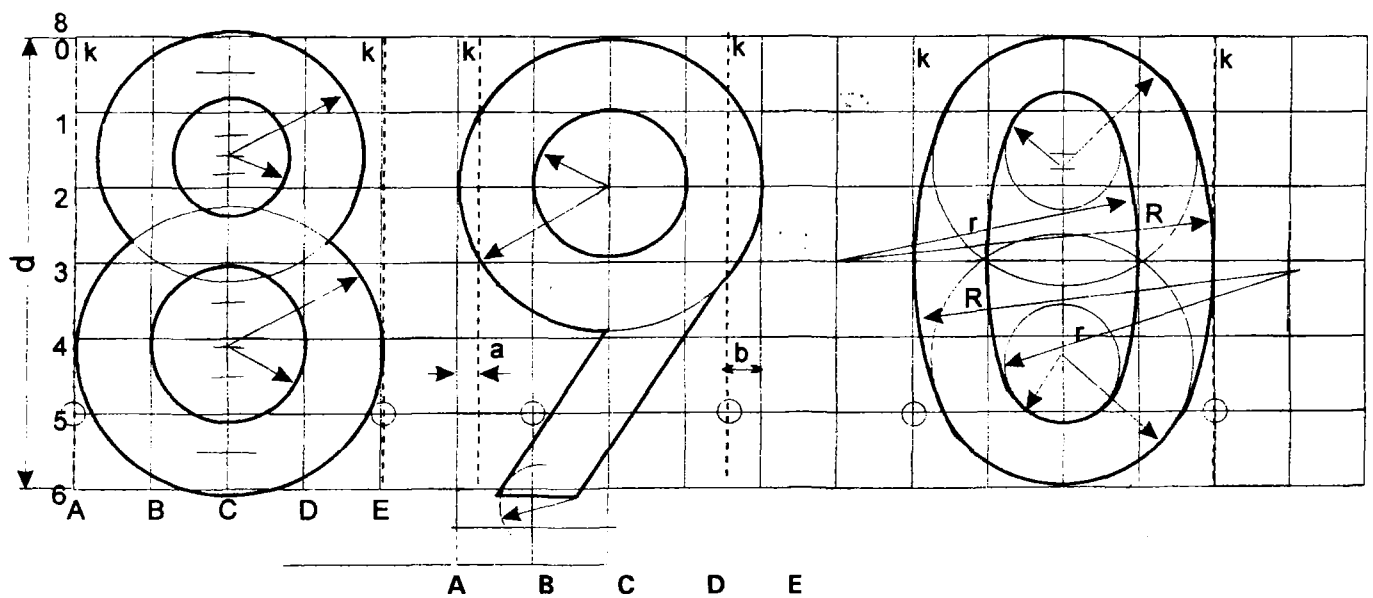
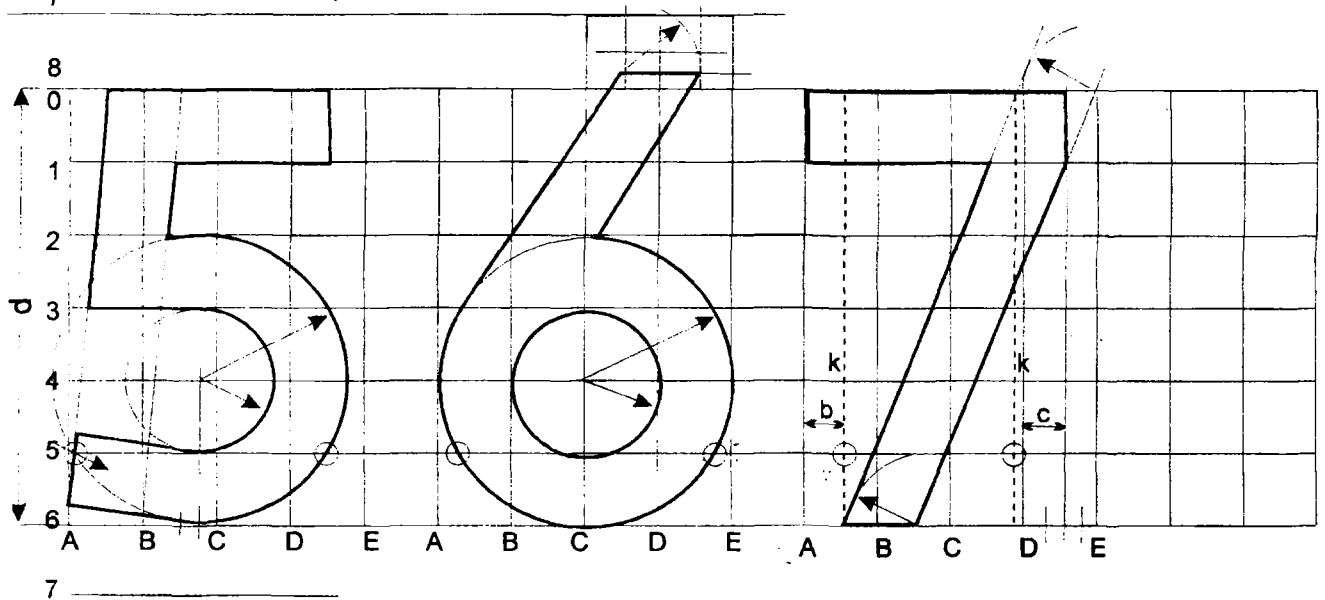
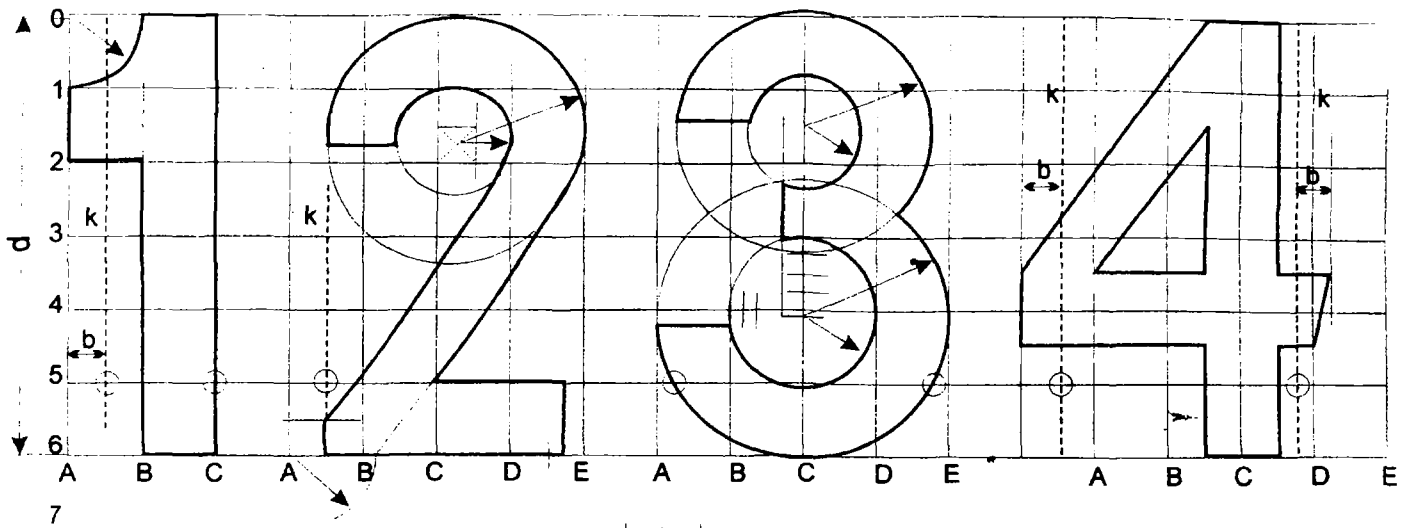
$a = 1,4gr$     $b = 1/2gr$     $c = 3/4gr$





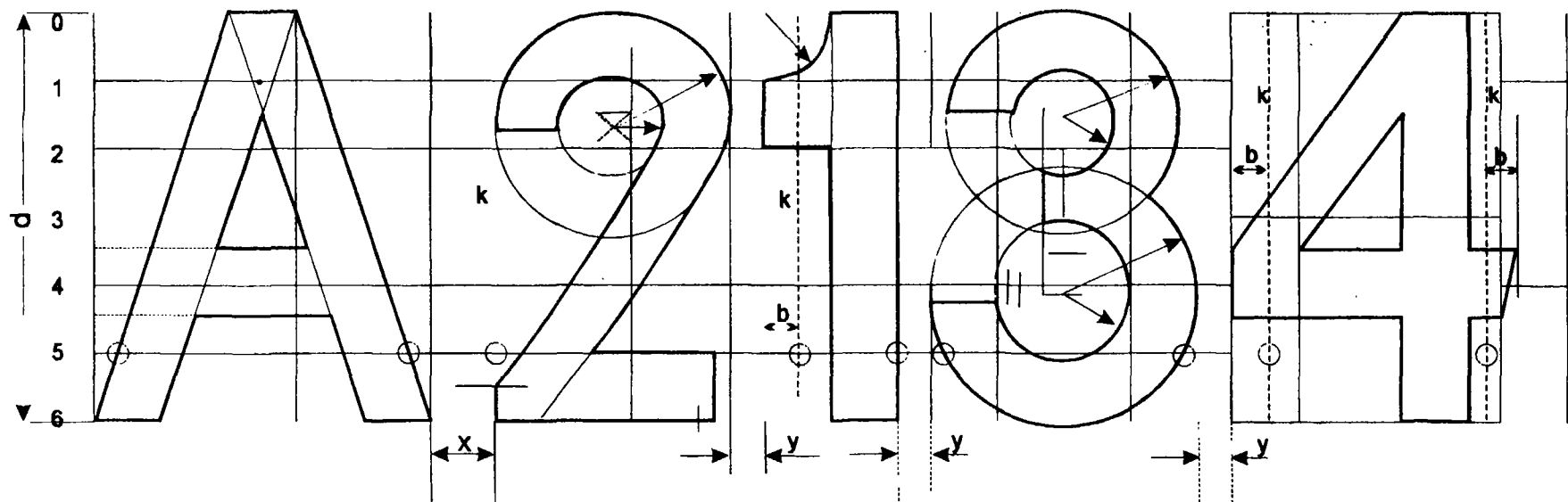
7





$a = 1/4gr$      $b = 1/2gr$      $c = 3/4gr$      $R = 11/2gr$      $r = 9/2gr$

**Rysunek 1.** Wzory proporcji liter i cyfr stosowanych w napisie numeru taktycznego



Rysunek 2. Wzór zestawienia napisu numeru taktycznego