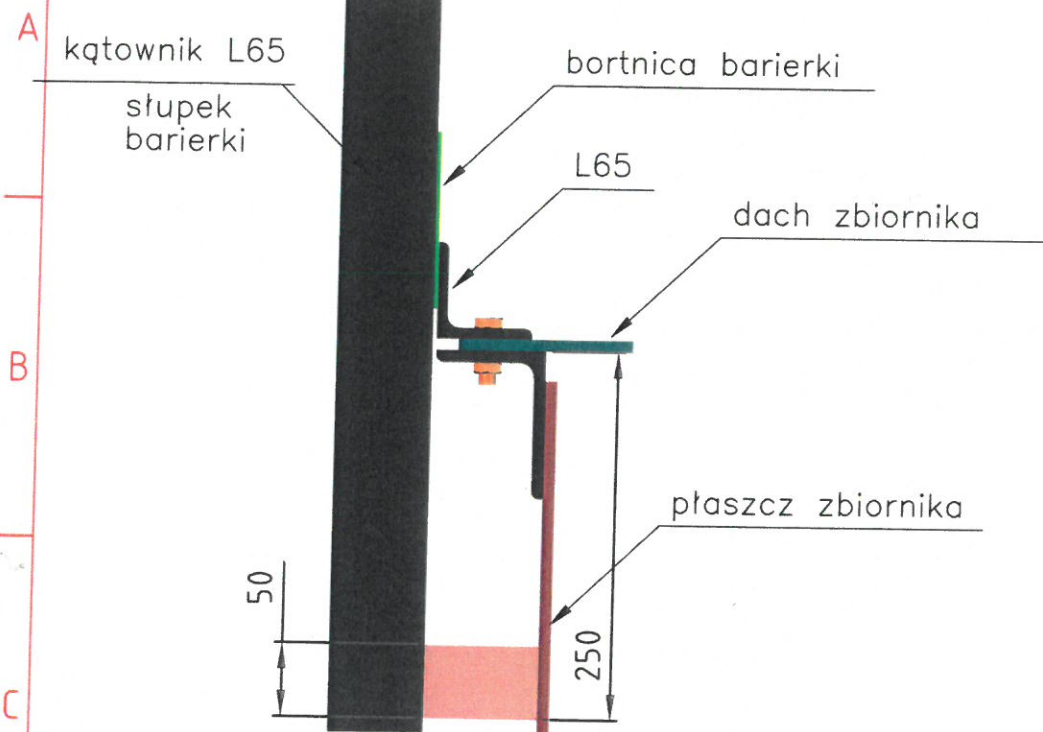
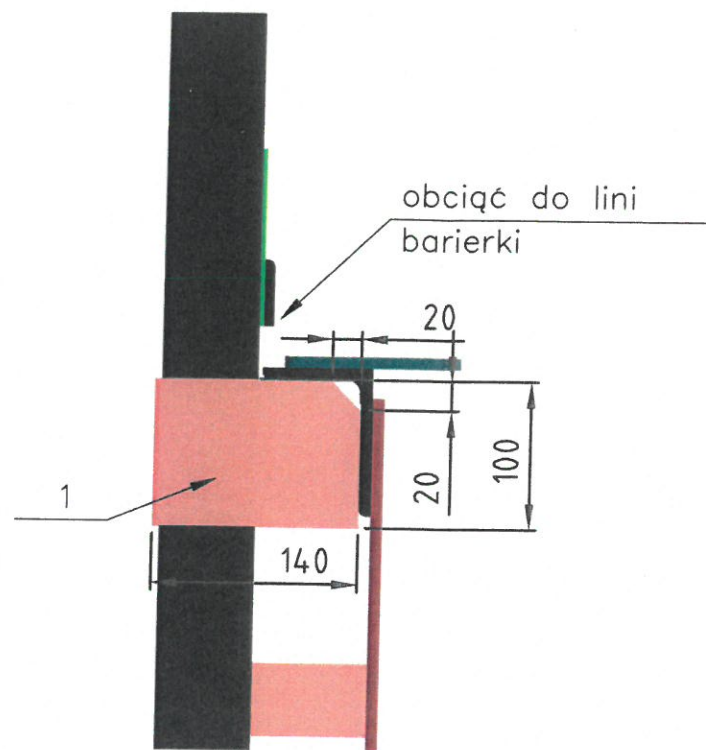


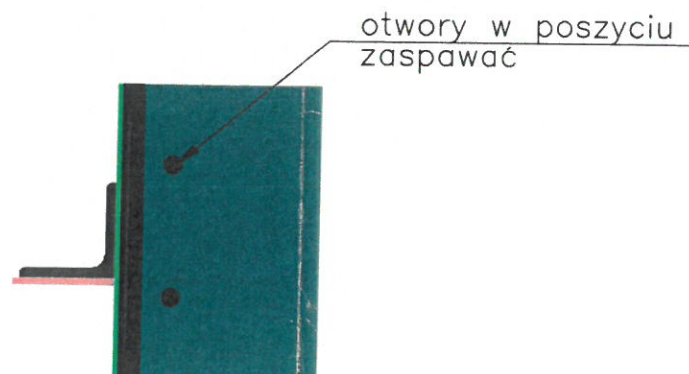
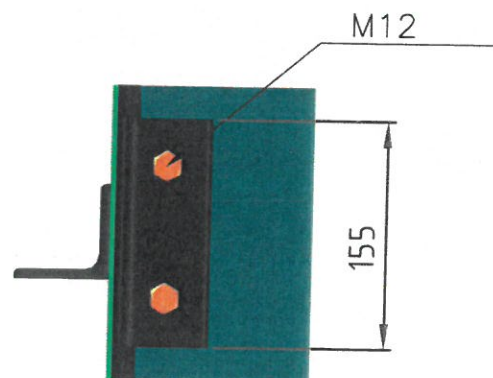
1 2 3 4 5 6 7 8



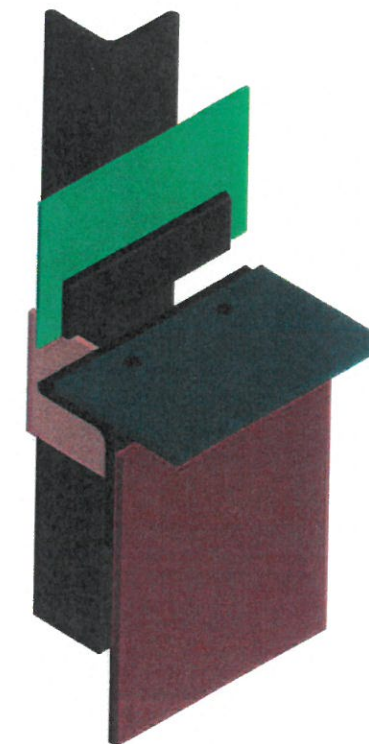
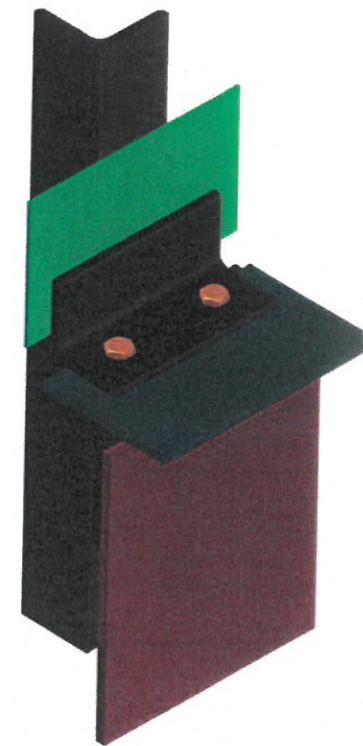
Przed naprawą



Po naprawie



- UWAGI
1. Ostre krawędzie stępić
 2. Blachę nr 1 spawać spoina a4 na całym obwodzie
 3. Naprawa dotyczy 10 szt słupków barierek



A
B
C
D
E
F

A
B
C
D