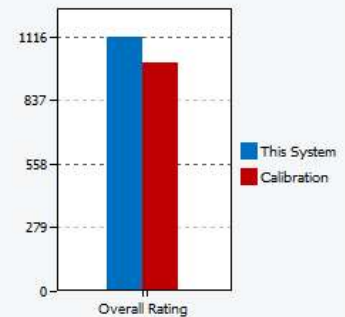
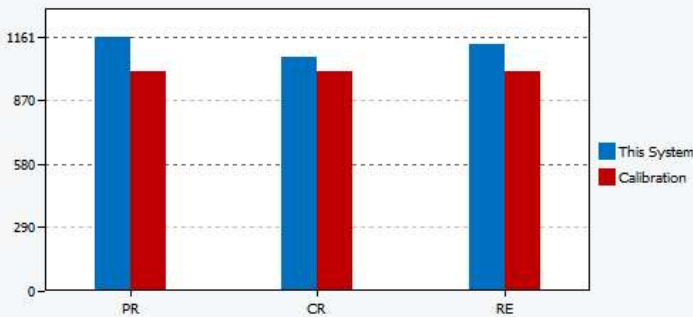


Test Summary

Project Name	Project001
Benchmark Version	1.0.3.50
Completion Date	2022-03-07 13:55:00
Iteration	1
System Conditioning	True
Process Idle Tasks	False

Performance Scores

	Productivity	Creativity	Responsiveness	Overall Rating
Scenario Rating	1161	1068	1127	1116
Iteration 1	1161	1068	1127	
Calibration	1000	1000	1000	1000



System Information Comparison Table

System Info	This System	Calibration System
BIOS	LENOVO GGCN20WW, 1/13/2021	Lenovo M1UKT47A - ThinkCentre M720q

Core + Memory

Motherboard type	LNVNB161216	312D
CPU	11th Gen Intel(R) Core(TM) i3-1115G4 @ 3.00GHz, 2995 Mhz, 2 Core(s), 4 Logical Processor(s)	Intel(R) Core(TM) i5-8500T CPU @ 2.10GHz, 2112 Mhz, 6 Core(s), 6 Logical Processor(s)
Memory Size	8.00 GB, 2 Channel, 3200 MHz	8.00 GB, 1 Channel, 2667 MHz
Power Source	AC	AC
Virtual Memory	9.68 GB Total, 7.42 GB Free	9.75 GB Total, 8.45 GB Free
Virtualization	Enabled in firmware	Enabled in firmware
Secure Boot	Secure Boot StateOff	Secure Boot StateOn

Video

Resolution	1920 x 1080 x 60 hertz	1920 x 1080 @ 60 Hz
GPU 0	Intel(R) UHD Graphics (version: 30.0.101.1340)	Intel(R) HD Graphics 630 (version: 26.20.100.7372)

Storage

Drive 0	238.47 GB (256,052,966,400 bytes) NVMe UMIS RPJTJ256MEE1OWX	238.47 GB (256,052,966,400 bytes) Micron MTFDDAK256DL
Policies	Write caching: Default; Power protected: Default	Write caching: Default; Power protected: Default

Operating System

OS Type	Microsoft Windows 10 Pro	Microsoft Windows 10 Pro
OS Version	10.0.19044.1288	10.0.18363.418
Bitlocker	Volume C: Protection Off	Volume C: Protection Off
Tamper Protection	Disabled	Disabled
Windows Defender Antivirus	Disabled	Disabled

Windows Security Center	Disabled	Disabled
Power Policy	BAPCo SYSmark 25	BAPCo SYSmark 25
Power Slider Overlay	Not Applicable	Not Applicable
Dark Mode (SYSmark/OS)	Enabled/Enabled	Disabled/Disabled
Virtualization-based Security	Disabled	Disabled
Memory Integrity	Disabled	Disabled

BAPCO® MISSION

Business Applications Performance Corporation (BAPCo®) is a non-profit consortium with a charter to develop and distribute a set of objective performance benchmarks for personal computers based on popular computer applications and industry standard operating systems.

ABOUT THE CALIBRATION SYSTEM

The calibration system is a system chosen as a reference point for all other SYSmark® 25 results. BAPCo chose the configuration above for its wide availability and its representation of a typical mainstream PC at the time of release of SYSmark 25.

SYSmark® has been calibrated in such a way that a PC with performance equivalent to this calibration system for a given workload will have a performance rating of 1000. A system twice as fast as the calibration system on a given workload (or, equivalently, that responds in half the time on average) will have a performance rating of 2000. This is true for both overall ratings and scenario ratings.